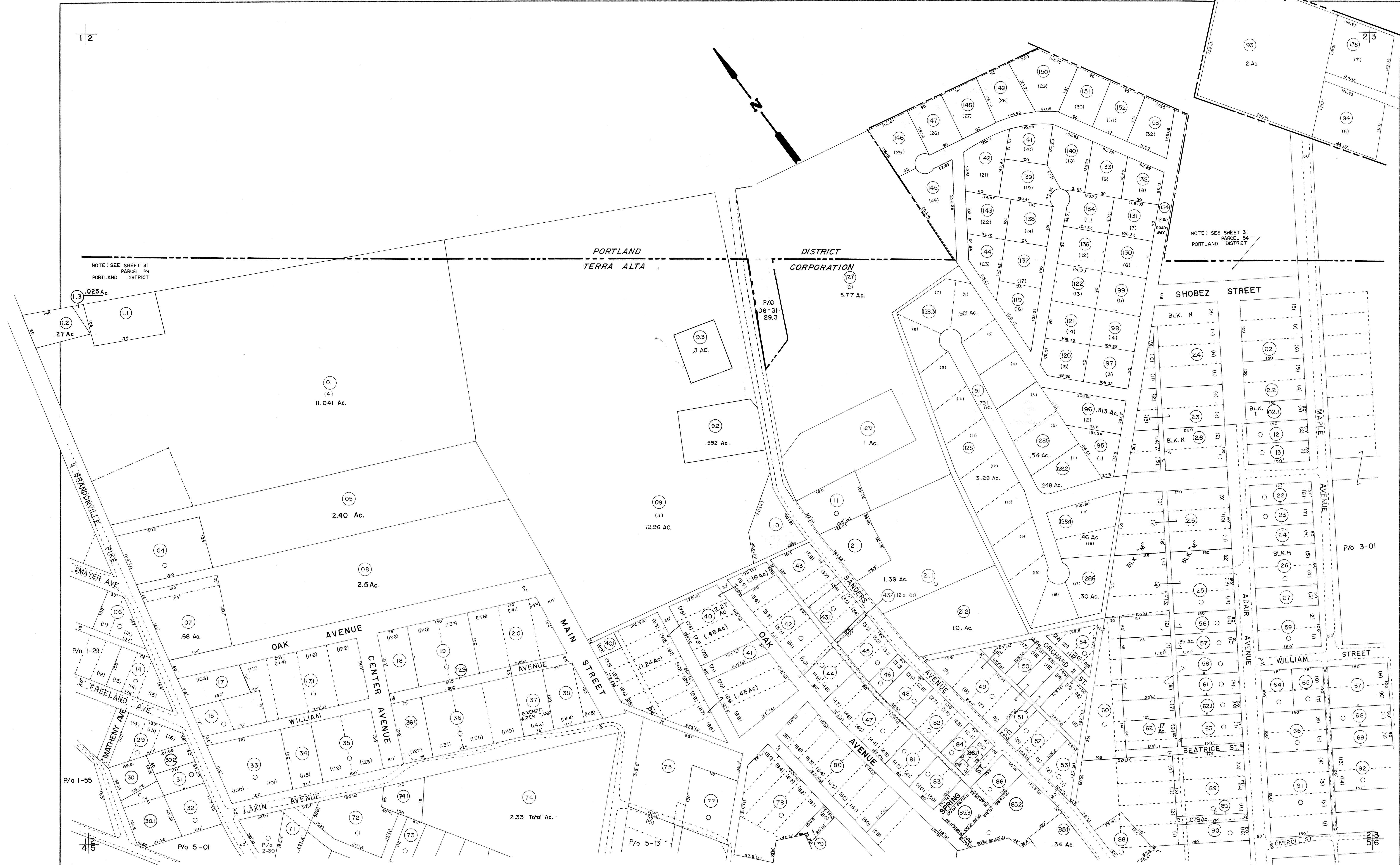


NOTE: SEE SHEET 31
PARCEL 29
PORTLAND DISTRICT

NOTE: SEE SHEET 31
PARCEL 29
PORTLAND DISTRICT



FOR TAX PURPOSES ONLY

Prepared by
L. ROBERT KIMBALL
Consulting Engineer
Ebensburg, Pennsylvania

Legend

Property line	Original lot line	Deed lot number - in parenthesis (15)
Edge of pavement or roadway	Corporation line	Parcel or index number in circle (99)
County line	Improvement	Railroad

Revisions

1	REVISED 1/20/64	9	REV. TO 7-1-89	NCS	17	ESI	1/16/01	REK
2	Revised to 7-1-81	10	OGIS 9/18/91	DSH	18	ESI	10-11-01	REC
3	July 1985	11	OGIS 5-1-93	JEB	19			
4	July 1985	12	O.G.I.S 3-27-95	J.E.B	20			
5	7-1-86	13	O.G.I.S 5-15-96	J.E.B	21			
6	July 1986	14	SLS INC. 4/28/98	DSW	22			
7	REV. TO 7-1-88	15	SLS INC 5/3/99	DSW	23			
8		16	SLS INC. 3/14/00	JAW	24			

STATE OF WEST VIRGINIA
COUNTY OF PRESTON
Office of Assessor

TERRA ALTA CORPORATION
SHEET 02
Date, Aerial Photography: APRIL, 1960
Date, Map: AUG, 1962
Photo No: 613-602
Scale: 1"=100'