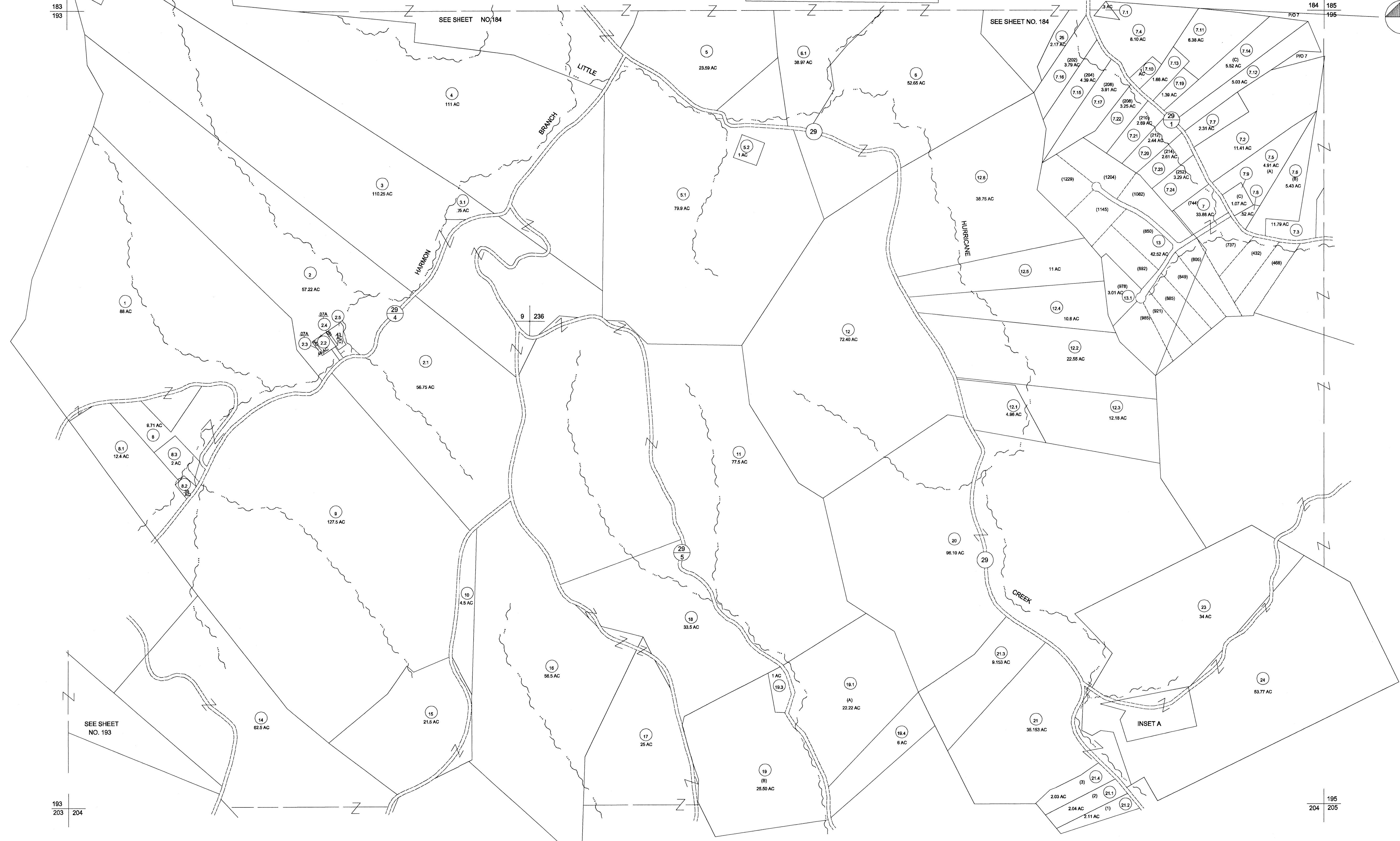
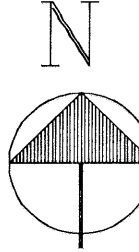


E.H. GRALEY ADDN. INSET "A"

SCALE 1"=200'



FOR TAX PURPOSES ONLY
 PREPARED BY
 PUTNAM COUNTY
 ASSESSOR'S OFFICE
 WINFIELD, WEST VIRGINIA

LEGEND	
PROPERTY LINE	_____
EDGE OF PAVEMENT OR ROADWAY	-----
CORPORATION LINE	-----
DISTRICT LINE	-----
COUNTY LINE	-----
STATE LINE	-----
LAND HOOK	—┴—
WATER	~~~~~
ORIGINAL LOT LINE	_____
DEED LOT NUMBER	(15)
PARCEL OR INDEX NO.	(99)
IMPROVEMENT(S)	o
RAILROAD	—+—
SCALED DIMENSION	(S)
DEED DIMENSION	(D)
CALCULATED DIMENSION	(C)

RESTRICTION

ALL TAX MAPS CREATED UNDER THE PROVISIONS OF REAPPRAISAL LEGISLATION ARE THE PROPERTY OF THE STATE OF WEST VIRGINIA AND THE REPRODUCTION, COPYING, DISTRIBUTION OR SALE OF SUCH TAX MAPS OR ANY COPIES THEREOF WITHOUT THE WRITTEN PERMISSION OF THE STATE TAX COMMISSIONER IS PROHIBITED BY LAW

REVISIONS	
KEY MAP	

PUTNAM COUNTY
STATE OF WEST VIRGINIA

OFFICE OF ASSESSOR

DISTRICT
SCOTT

SHEET NO.: 194

DATE, AERIAL PHOTOGRAPHY:
 PHOTO NO.:

DATE, MAP:
 SCALE: 1"= 400'

1. CONVERTED TO CAD FILE 3/24/87