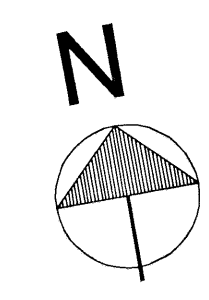
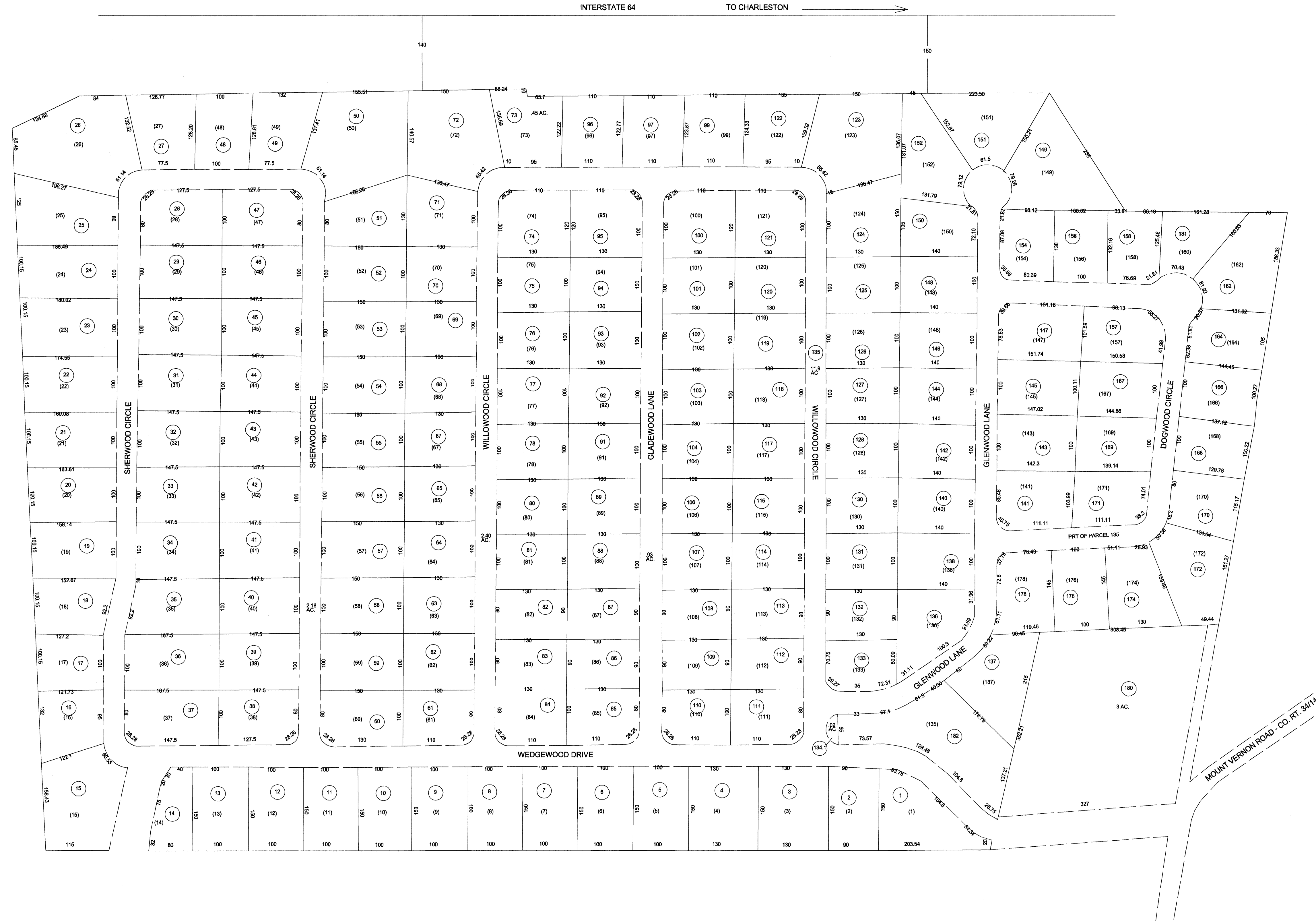


WOODS & IRON
SUBDIVISION SECTIONS

SECTION ONE INCLUDES LOTS 1-14
SECTION TWO INCLUDES LOTS 15-26
SECTION THREE INCLUDES LOTS 27-37
SECTION FOUR INCLUDES LOTS 38-60
SECTION FIVE INCLUDES LOTS 61-97
SECTION SIX INCLUDES LOTS 98-134

INTERSTATE 64 TO CHARLESTON



FOR TAX PURPOSES ONLY
PREPARED BY
PUTNAM COUNTY
ASSESSOR'S OFFICE
WINIFELD, WEST VIRGINIA

LEGEND	
PROPERTY LINE	———
EDGE OF PAVEMENT OR ROADWAY	———
CORPORATION LINE	———
DISTRICT LINE	———
COUNTY LINE	———
STATE LINE	———
LAND HOOK	———
WATER	———
ORIGINAL LOT LINE	(15)
DEED LOT NUMBER	(99)
PARCEL OR INDEX NO.	(89)
IMPROVEMENT(S)	○
RAILROAD	———
SCALED DIMENSION	(S)
DEED DIMENSION	(D)
CALCULATED AREA	(C)

RESTRICTION
ALL TAX MAPS CREATED UNDER THE PROVISIONS OF REAPPRAISAL LEGISLATION ARE THE PROPERTY OF THE STATE OF WEST VIRGINIA AND THE REPRODUCTION, COPYING, DISTRIBUTION OR SALE OF SUCH TAX MAPS OR ANY COPIES THEREOF WITHOUT THE WRITTEN PERMISSION OF THE STATE TAX COMMISSIONER IS PROHIBITED BY LAW

REVISIONS
1. CONVERTED TO CAD FILE 1/13/97

KEY MAP

PUTNAM COUNTY
STATE OF WEST VIRGINIA
OFFICE OF ASSESSOR

DISTRICT	SCOTT
SHEET NO.:	212B
DATE, AERIAL PHOTOGRAPHY:	DATE, MAP:
PHOTO NO.:	SCALE: 1"=100'