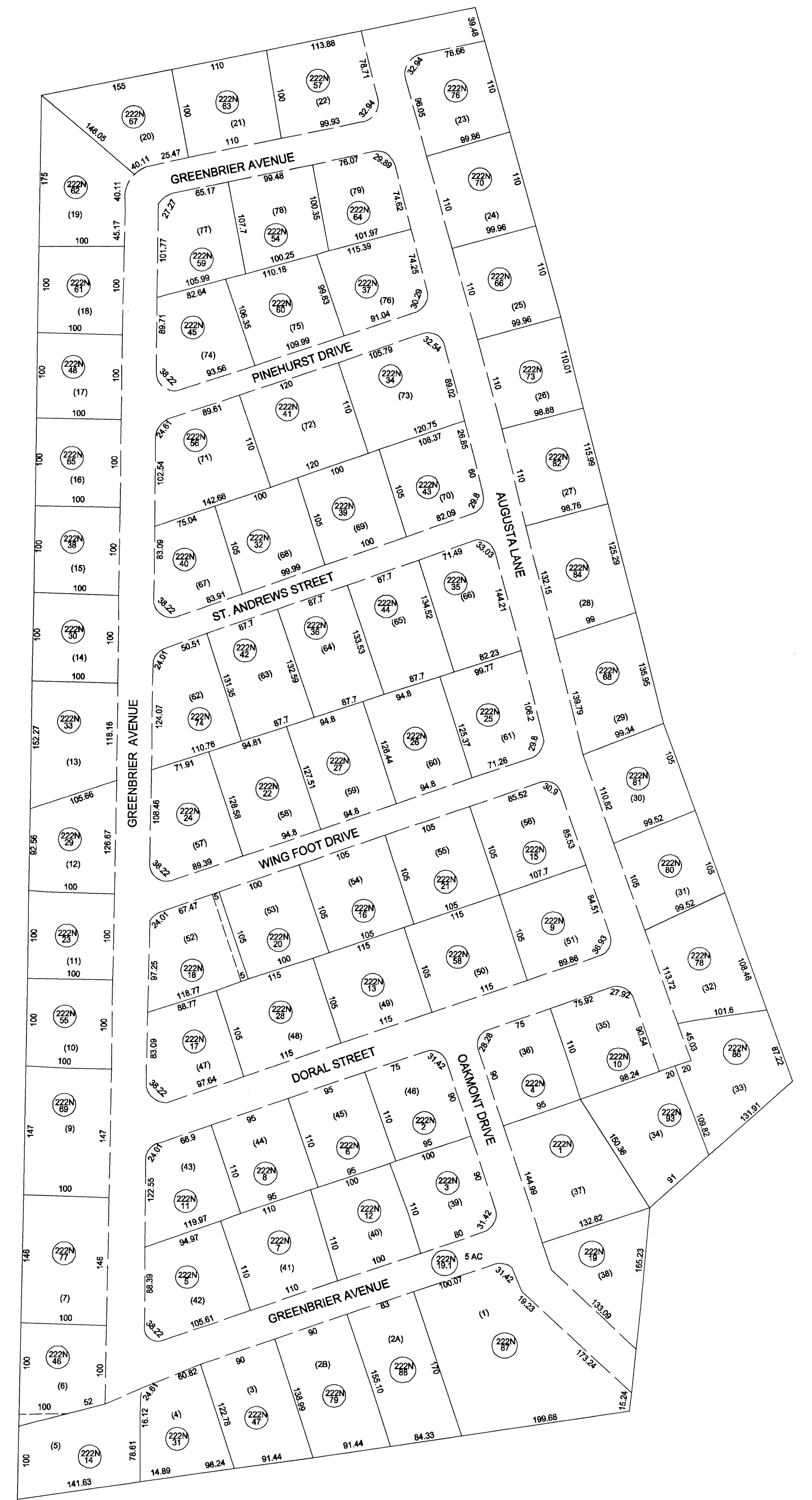
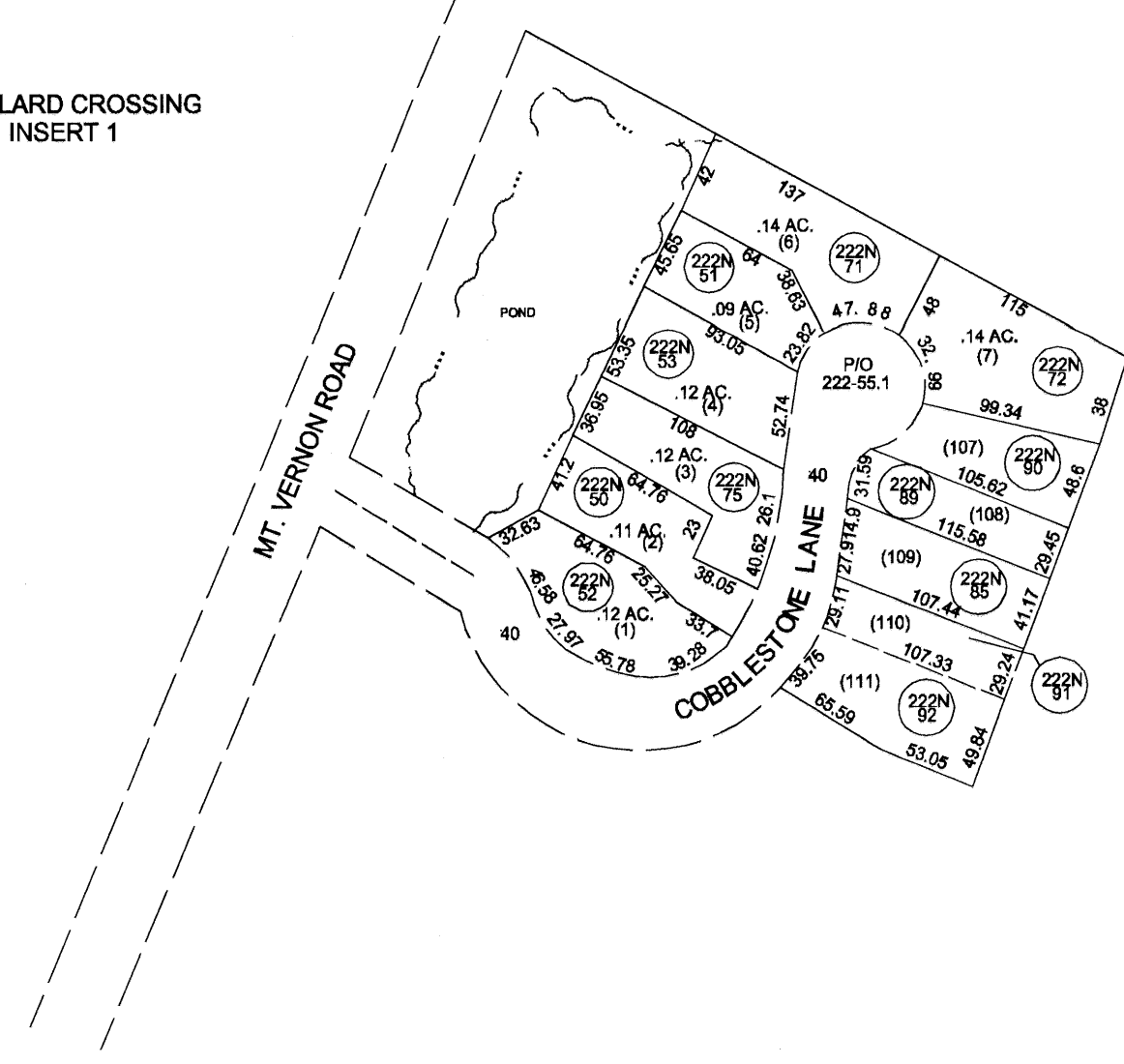
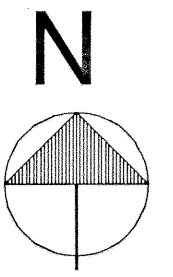


MALLARD CROSSING
INSERT 1



SLEEPY HOLLOW TOWNSHIP



FOR TAX PURPOSES ONLY
PREPARED BY
PUTNAM COUNTY
ASSESSOR'S OFFICE
WINFIELD, WEST VIRGINIA

LEGEND	
PROPERTY LINE	—————
EDGE OF PAVEMENT OR ROADWAY	—————
CORPORATION LINE	-----
DISTRICT LINE	-----
COUNTY LINE	-----
STATE LINE	-----
LAND HOOK	↗
WATER	~~~~~
ORIGINAL LOT LINE	————— (15)
DEED LOT NUMBER	⑨⑧
PARCEL OR INDEX NO.	○
IMPROVEMENT(S)	○
RAILROAD	————— (S)
SCALED DIMENSION	————— (D)
DEED DIMENSION	————— (C)
CALCULATED AREA	————— (C)

RESTRICTION
ALL TAX MAPS CREATED UNDER THE PROVISIONS OF REAPPRAISAL LEGISLATION ARE THE PROPERTY OF THE STATE OF WEST VIRGINIA AND THE REPRODUCTION, COPYING, DISTRIBUTION OR SALE OF SUCH TAX MAPS OR ANY COPIES THEREOF WITHOUT THE WRITTEN PERMISSION OF THE STATE TAX COMMISSIONER IS PROHIBITED BY LAW

REVISIONS	KEY MAP
	222
	222 222N 222
	222
1. CONVERTED TO CAD FILE 1/21/97	

PUTNAM COUNTY
STATE OF WEST VIRGINIA
OFFICE OF ASSESSOR

DISTRICT	
TEAYS VALLEY-SCOTT	
SHEET NO.:	222N
DATE, AERIAL PHOTOGRAPHY: PHOTO NO.:	DATE, MAP: SCALE: 1"=100'