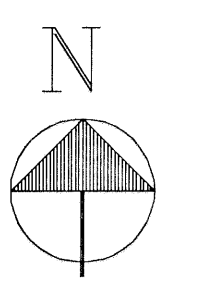
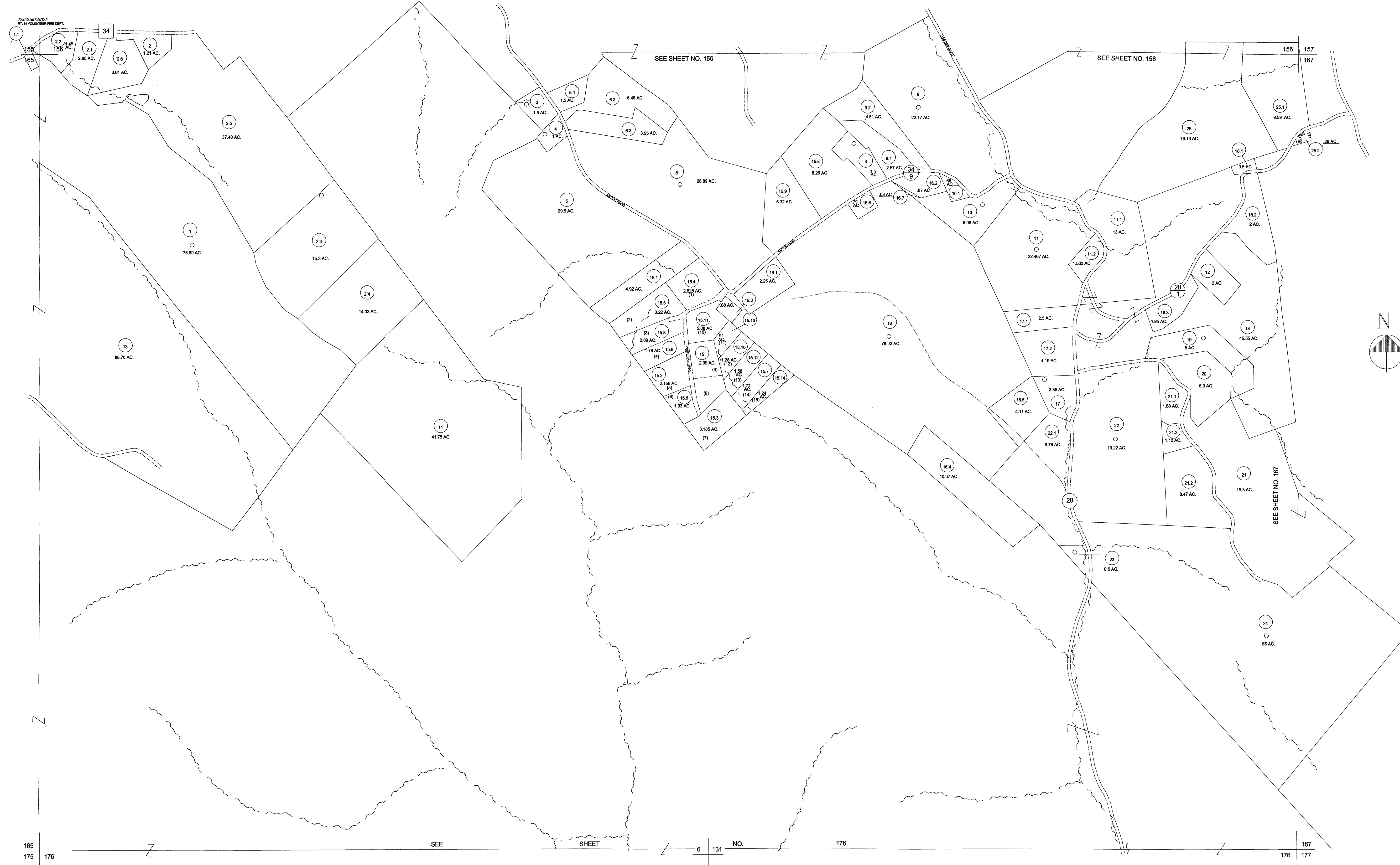


78x125x72x131
 RT. 34 VOLUNTEER FIRE DEPT.



FOR TAX PURPOSES ONLY
 PREPARED BY
 PUTNAM COUNTY
 ASSESSOR'S OFFICE
 WINFIELD, WEST VIRGINIA

LEGEND	
PROPERTY LINE	—
EDGE OF PAVEMENT OR ROADWAY	- - - - -
CORPORATION LINE	— · — · —
DISTRICT LINE	— · — · —
COUNTY LINE	— · — · —
STATE LINE	— · — · —
LAND HOOK	— · — · —
WATER	~ ~ ~ ~ ~
ORIGINAL LOT LINE	(15)
DEED LOT NUMBER	(99)
PARCEL OR INDEX NO.	()
IMPROVEMENT(S)	o
RAILROAD	— · — · —
SCALED DIMENSION	(S)
DEED DIMENSION	(D)
CALCULATED AREA	(C)

RESTRICTION

ALL TAX MAPS CREATED UNDER THE PROVISIONS OF REAPPRAISAL LEGISLATION ARE THE PROPERTY OF THE STATE OF WEST VIRGINIA AND THE REPRODUCTION, COPYING, DISTRIBUTION OR SALE OF SUCH TAX MAPS OR ANY COPIES THEREOF WITHOUT THE WRITTEN PERMISSION OF THE STATE TAX COMMISSIONER IS PROHIBITED BY LAW

REVISIONS	KEY MAP
	155 156 157
	165 166 167
	175 176 177
1. CONVERTED TO CAD FILE 7/15/97	

PUTNAM COUNTY
STATE OF WEST VIRGINIA
 OFFICE OF ASSESSOR

DISTRICT **POCA**

SHEET NO.: **166**

DATE, AERIAL PHOTOGRAPHY: 1958 DATE, MAP: 1959
 PHOTO NO.: SCALE: 1"= 400'