

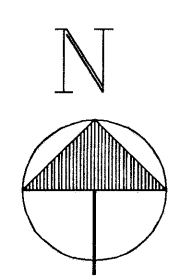
175 176  
185

176 177  
187

SEE ↗

SHEET

NO. 176



6 133

6 134

PO 176-1

5

POCA

RIVER

LEFT

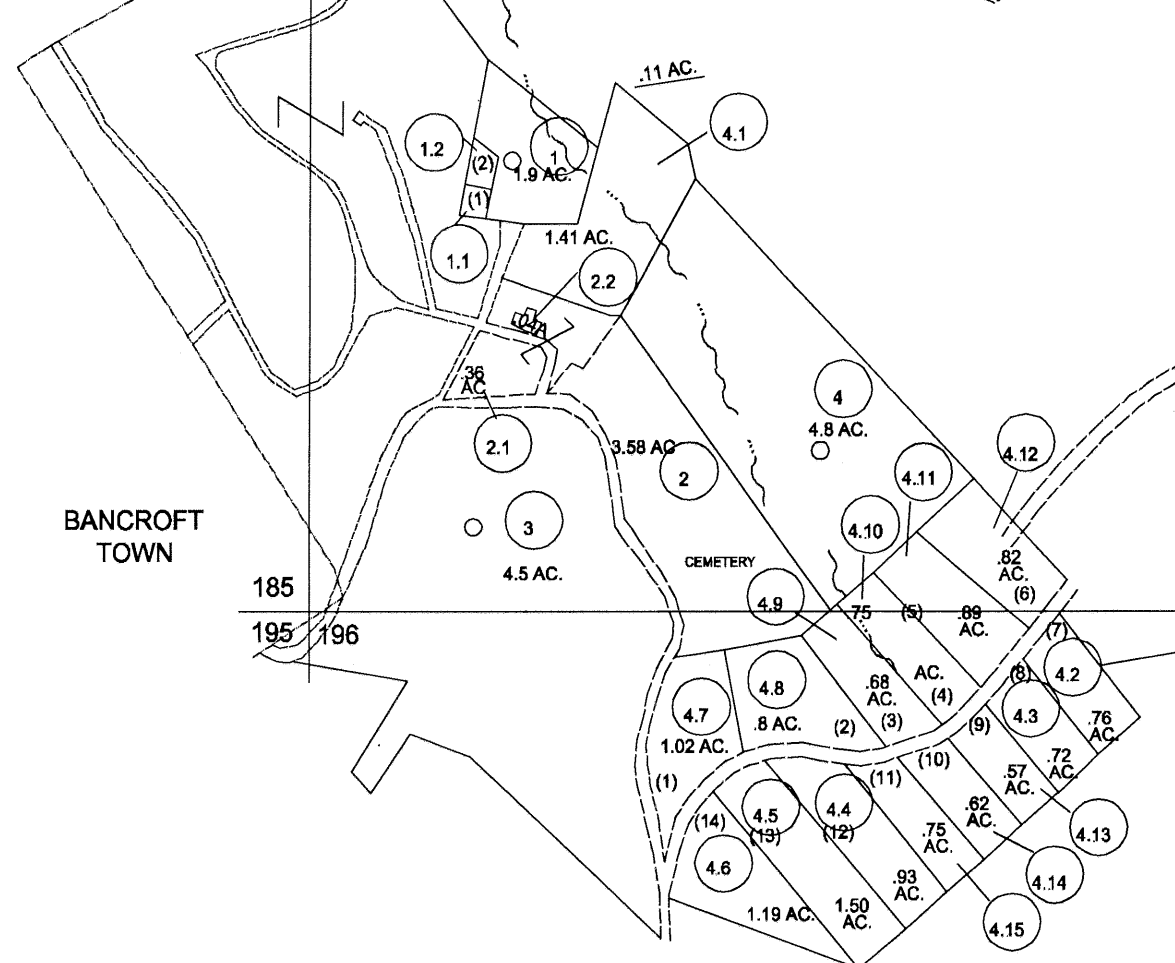
FORK

SEE SHEET NO. 196

187  
196 197

BANCROFT TOWN

185 186  
195 196



LEGEND

PROPERTY LINE	———	ORIGINAL LOT LINE	———
EDGE OF PAVEMENT OR ROADWAY	———	DEED LOT NUMBER	(15)
CORPORATION LINE	———	PARCEL OR INDEX NO.	(99)
DISTRICT LINE	———	IMPROVEMENT(S)	○
COUNTY LINE	———	RAILROAD	———
STATE LINE	———	SCALED DIMENSION	(S)
LAND HOOK	———	DEED DIMENSION	(D)
WATER	~~~~~	CALCULATED AREA	(C)

RESTRICTION

ALL TAX MAPS CREATED UNDER THE PROVISIONS OF REAPPRAISAL LEGISLATION ARE THE PROPERTY OF THE STATE OF WEST VIRGINIA AND THE REPRODUCTION, COPYING, DISTRIBUTION OR SALE OF SUCH TAX MAPS OR ANY COPIES THEREOF WITHOUT THE WRITTEN PERMISSION OF THE STATE TAX COMMISSIONER IS PROHIBITED BY LAW

REVISIONS

1. CONVERTED TO CAD FILE 7/17/97

KEY MAP

175	176	177
185	186	187
195	196	197

PUTNAM COUNTY  
STATE OF WEST VIRGINIA

OFFICE OF ASSESSOR

DISTRICT

POCA

SHEET NO.: 186

DATE, AERIAL PHOTOGRAPHY: 1958  
PHOTO NO.:

DATE, MAP: 1959  
SCALE: 1"= 400'

FOR TAX PURPOSES ONLY  
PREPARED BY  
PUTNAM COUNTY  
ASSESSOR'S OFFICE  
WINFIELD, WEST VIRGINIA