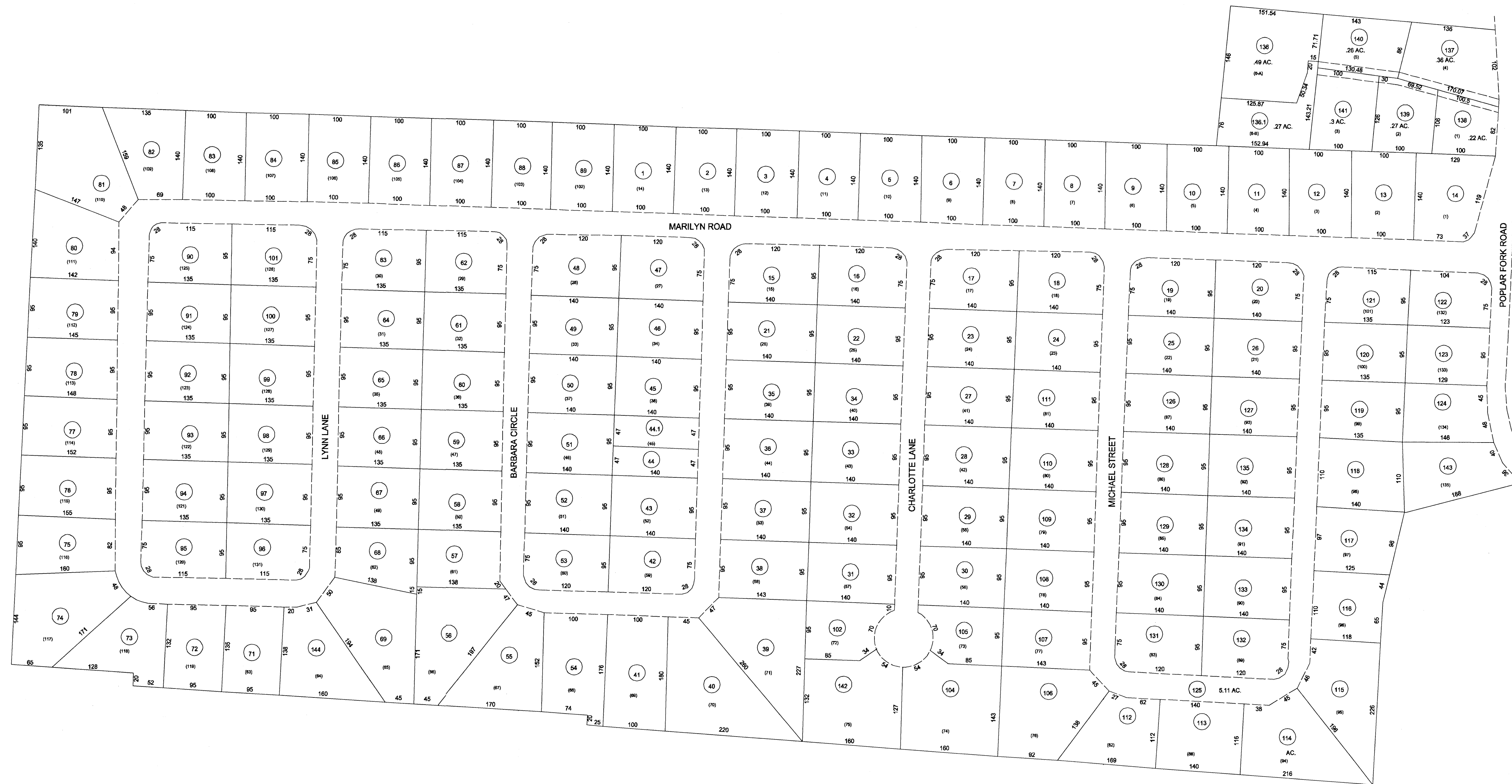
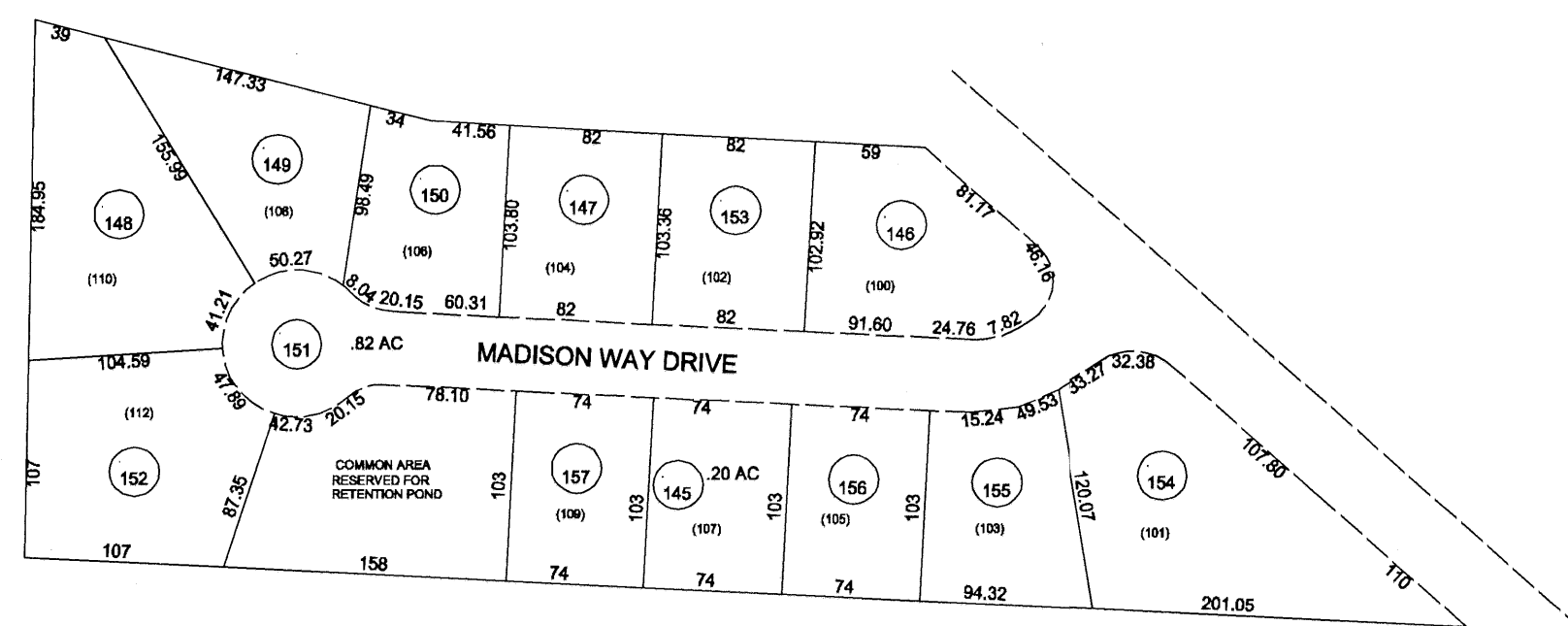


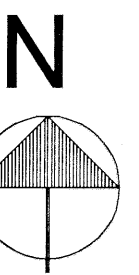
A.J. MCCLURE ADDITION



TEAYS VILLAGE
 SEC. I LOTS 1-26
 SEC. II LOTS 27-71
 SEC. III LOTS 72-132



MADISON WAY SUBD
 INSERT 2



FOR TAX PURPOSES ONLY
 PREPARED BY
 PUTNAM COUNTY
 ASSESSOR'S OFFICE
 WINFIELD, WEST VIRGINIA

LEGEND	
PROPERTY LINE	—————
EDGE OF PAVEMENT OR ROADWAY	- - - - -
CORPORATION LINE	—————
DISTRICT LINE	—————
COUNTY LINE	—————
ORIGINAL LOT LINE	—————
DEED LOT NUMBER	(15)
PARCEL OR INDEX NO.	(99)
IMPRCVMET(S)	○
RAILROAD	—————

ALL TAX MAPS CREATED UNDER THE PROVISIONS OF REAPPRAISAL LEGISLATION ARE THE PROPERTY OF THE STATE OF WEST VIRGINIA AND THE REPRODUCTION, COPYING, DISTRIBUTION OR SALE OF SUCH TAX MAPS OR ANY COPIES THEREOF WITHOUT THE WRITTEN PERMISSION OF THE STATE TAX COMMISSIONER IS PROHIBITED BY LAW

REVISIONS	KEY MAP
	223D 223
	223 223J 223
	223
1. CONVERTED TO CAD FILE 1/8/97	

PUTNAM COUNTY
STATE OF WEST VIRGINIA
 OFFICE OF ASSESSOR

DISTRICT **SCOTT**
 SHEET NO.: **223J**
 DATE, AERIAL PHOTOGRAPHY: 1958 DATE, MAP: 1959
 PHOTO NO.: SCALE: 1"=100'