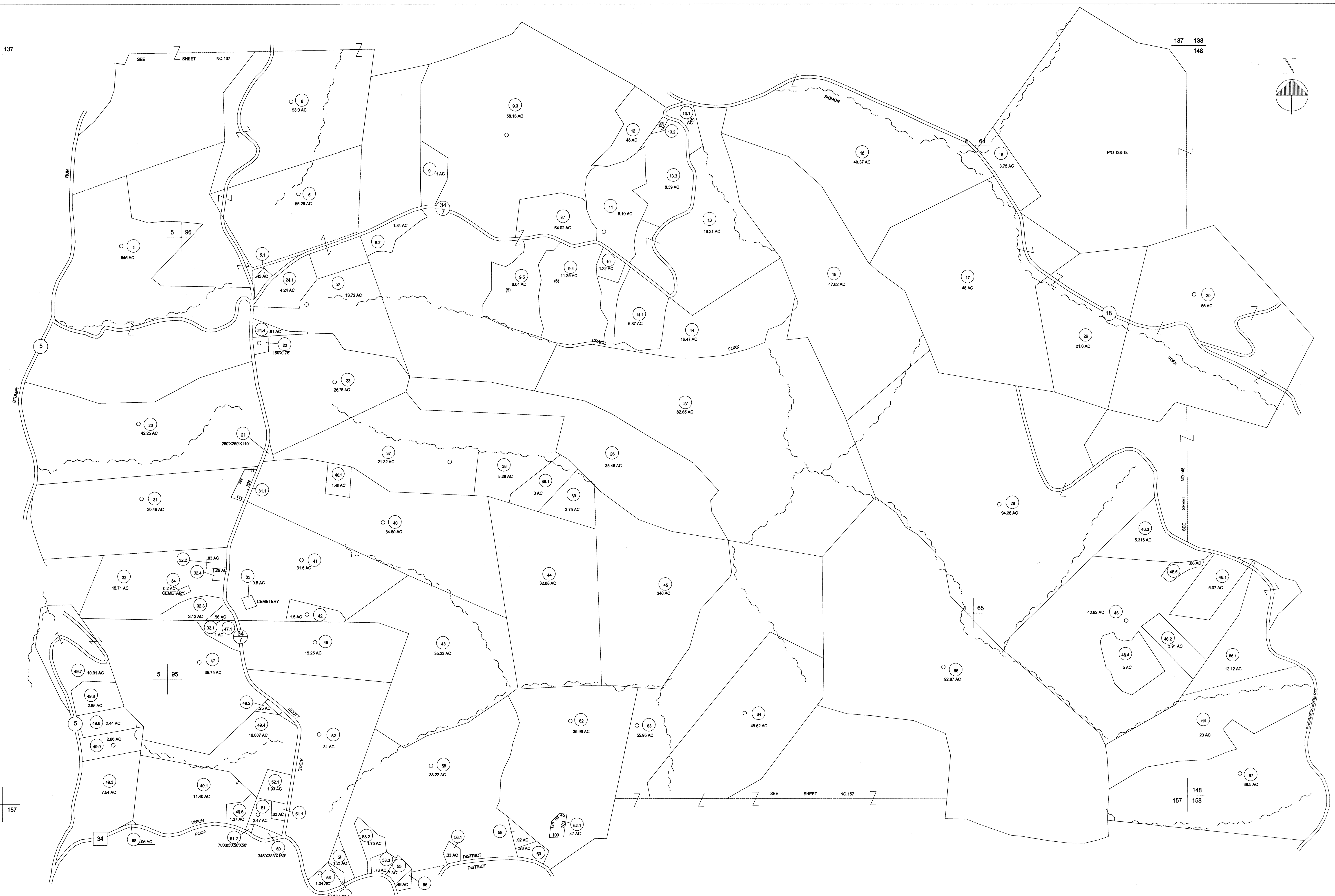
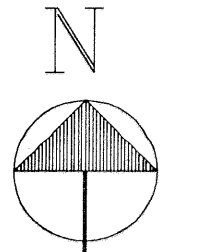


136 137
146

137 138
148



146 157
156

DISTRICT **UNION**

SHEET NO.: **147**

DATE, AERIAL PHOTOGRAPHY: _____ DATE, MAP: _____
 PHOTO NO.: _____ SCALE: 1"= 400'

PUTNAM COUNTY
STATE OF WEST VIRGINIA

OFFICE OF ASSESSOR

REVISIONS	KEY MAP
	136 137 138
	146 147 148
	156 157 158
1. CONVERTED TO CAD FILE 6/25/97	

RESTRICTION

ALL TAX MAPS CREATED UNDER THE PROVISIONS OF REAPPRAISAL LEGISLATION ARE THE PROPERTY OF THE STATE OF WEST VIRGINIA AND THE REPRODUCTION, COPYING, DISTRIBUTION OR SALE OF SUCH TAX MAPS OR ANY COPIES THEREOF WITHOUT THE WRITTEN PERMISSION OF THE STATE TAX COMMISSIONER IS PROHIBITED BY LAW.

LEGEND	
PROPERTY LINE	———
EDGE OF PAVEMENT OR ROADWAY	———
CORPORATION LINE	———
DISTRICT LINE	———
COUNTY LINE	———
STATE LINE	———
LAND HOOK	———
WATER	———
ORIGINAL LOT LINE	○ (15)
DEED LOT NUMBER	○ (99)
PARCEL OR INDEX NO.	○
IMPROVEMENT(S)	○
RAILROAD	———
SCALED DIMENSION	(S)
DEED DIMENSION	(D)
CALCULATED AREA	(C)

FOR TAX PURPOSES ONLY
 PREPARED BY
 MICHAEL BAKER, JR., INC.
 CONSULTING ENGINEERS
 ROCHESTER, PENNSYLVANIA