

FOR TAX PURPOSES ONLY

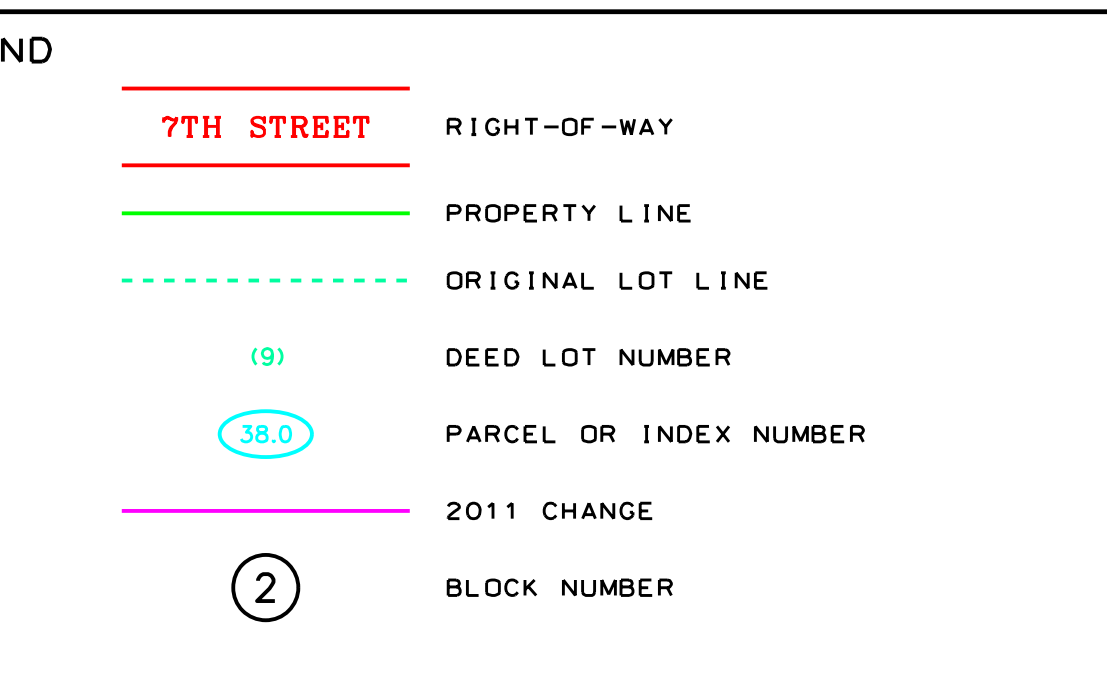
PREPARED BY  
RALEIGH COUNTY ASSESSOR'S OFFICE  
BECKLEY, WV

RESTRICTION

ALL TAX MAPS CREATED UNDER THE PROVISIONS OF REAPPRAISAL LEGISLATION ARE THE PROPERTY OF RALEIGH COUNTY, WEST VIRGINIA. THE REPRODUCTION, COPYING, DISTRIBUTION OR SALE OF SUCH TAX MAPS OR ANY COPIES THEREOF WITHOUT THE WRITTEN PERMISSION OF THE RALEIGH COUNTY ASSESSOR IS PROHIBITED BY LAW.

REVISIONS
1 12/17/96 CLG
2 09/02/97 SCR
3 11/18/99 CLG
4 03/26/01 CLG
5 11/21/02 CLG
6 08/29/05 CLG
7 01/24/07 CLG
8 06/05/08 ADL
9 06/18/09 TPB
10

LEGEND	
	TOWN DIST BECKLEY CORP CORPORATION/DISTRICT BOUNDARY AND NAME
	FAYETTE CO RALEIGH CO COUNTY BOUNDARY AND NAME
	01-17 ORIGINAL MAP BOUNDARY AND NUMBER
	01-36 ORIGINAL MAP BOUNDARY AND NUMBER
	7TH STREET RIGHT-OF-WAY
	PROPERTY LINE
	ORIGINAL LOT LINE
	(9) DEED LOT NUMBER
	(38.0) PARCEL OR INDEX NUMBER
	(2) 2011 CHANGE BLOCK NUMBER



COUNTY OF RALEIGH  
OFFICE OF ASSESSOR  
BECKLEY, WEST VIRGINIA

BECKLEY CORPORATION  
DISTRICT 01  
MAP NO. 31