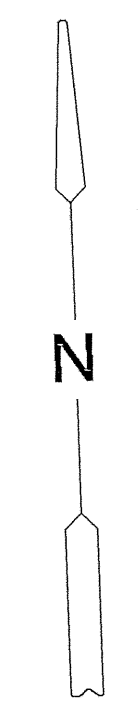
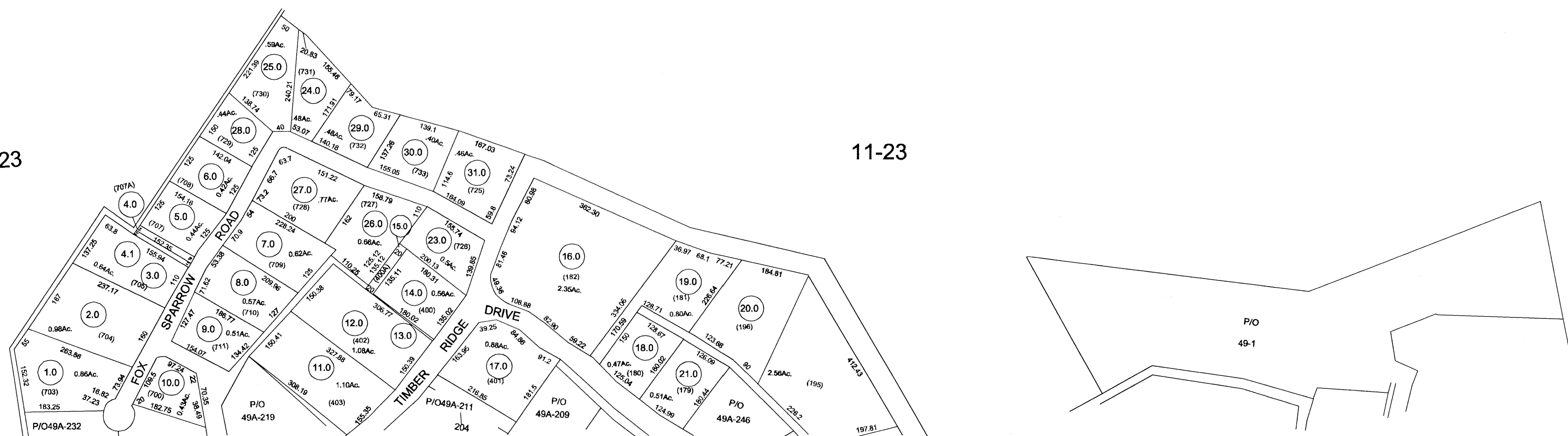


11-23

11-23



For Tax Purposes Only
 Prepared by
RALEIGH COUNTY ASSESSOR'S OFFICE
DREMA B. EVANS, ASSESSOR
BECKLEY, WV

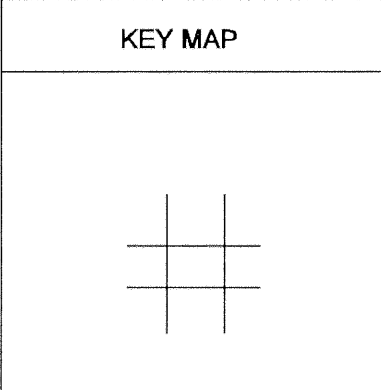
LEGEND	
Property line	—————
Edge of pavement or roadway	—————
Corporation line	—————
District line	—————
County line	—————
Waterways	—————
2001 CHANGE	—————

Original lot line	—————
Deed lot number	(15)
Parcel or index number	99
Improvement	o
Railroad	—————

REVISIONS
1
2
3
4
5
6
7
8

RESTRICTION

All tax maps created under the provisions of reappraisal legislation are the property of Raleigh County West Virginia and the reproduction, copying distribution or sale of such tax maps or any copies thereof without the written permission of the Raleigh County Assessor is prohibited by law.



COUNTY OF RALEIGH

Office of Assessor
 Beckley, W.Va.

BECKLEY CORPORATION
 District 01 MAP NO. 49AB

Date, Aerial Photography: _____ Date, Map: MARCH 12, 1996
 Photo No: _____ Scale: 1" = 200'