

FOR TAX PURPOSES ONLY

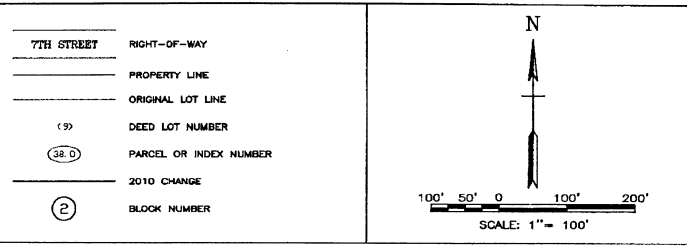
PREPARED BY
 RALEIGH COUNTY ASSESSOR'S OFFICE
 DREMA B. EVANS, ASSESSOR
 BECKLEY, WV

RESTRICTION

ALL TAX MAPS CREATED UNDER THE PROVISIONS OF REAPPRAISAL LEGISLATION ARE THE PROPERTY OF RALEIGH COUNTY, WEST VIRGINIA. THE REPRODUCTION, COPYING, DISTRIBUTION OR SALE OF SUCH TAX MAPS OR ANY COPIES THEREOF WITHOUT THE WRITTEN PERMISSION OF THE RALEIGH COUNTY ASSESSOR IS PROHIBITED BY LAW.

REVISIONS	
1	04/30/97 SCR
2	02/25/03 CLG
3	MM/DD/YY ABC
4	MM/DD/YY ABC
5	MM/DD/YY ABC
6	MM/DD/YY ABC
7	MM/DD/YY ABC
8	MM/DD/YY ABC
9	MM/DD/YY ABC
10	MM/DD/YY ABC

TOWN DIST		LEGEND	
BECKLEY CORP	CORPORATION/DISTRICT BOUNDARY AND NAME	7TH STREET	RIGHT-OF-WAY
FAYETTE CO	COUNTY BOUNDARY AND NAME	(S)	PROPERTY LINE
RALEIGH CO	ORIGINAL MAP BOUNDARY AND NUMBER	(38.D)	ORIGINAL LOT LINE
01-17		(2)	DEED LOT NUMBER
01-36			PARCEL OR INDEX NUMBER
			2010 CHANGE
			BLOCK NUMBER



COUNTY OF RALEIGH
 OFFICE OF ASSESSOR
 BECKLEY, WEST VIRGINIA

BECKLEY CORPORATION
 DISTRICT 01
 MAP NO. 62