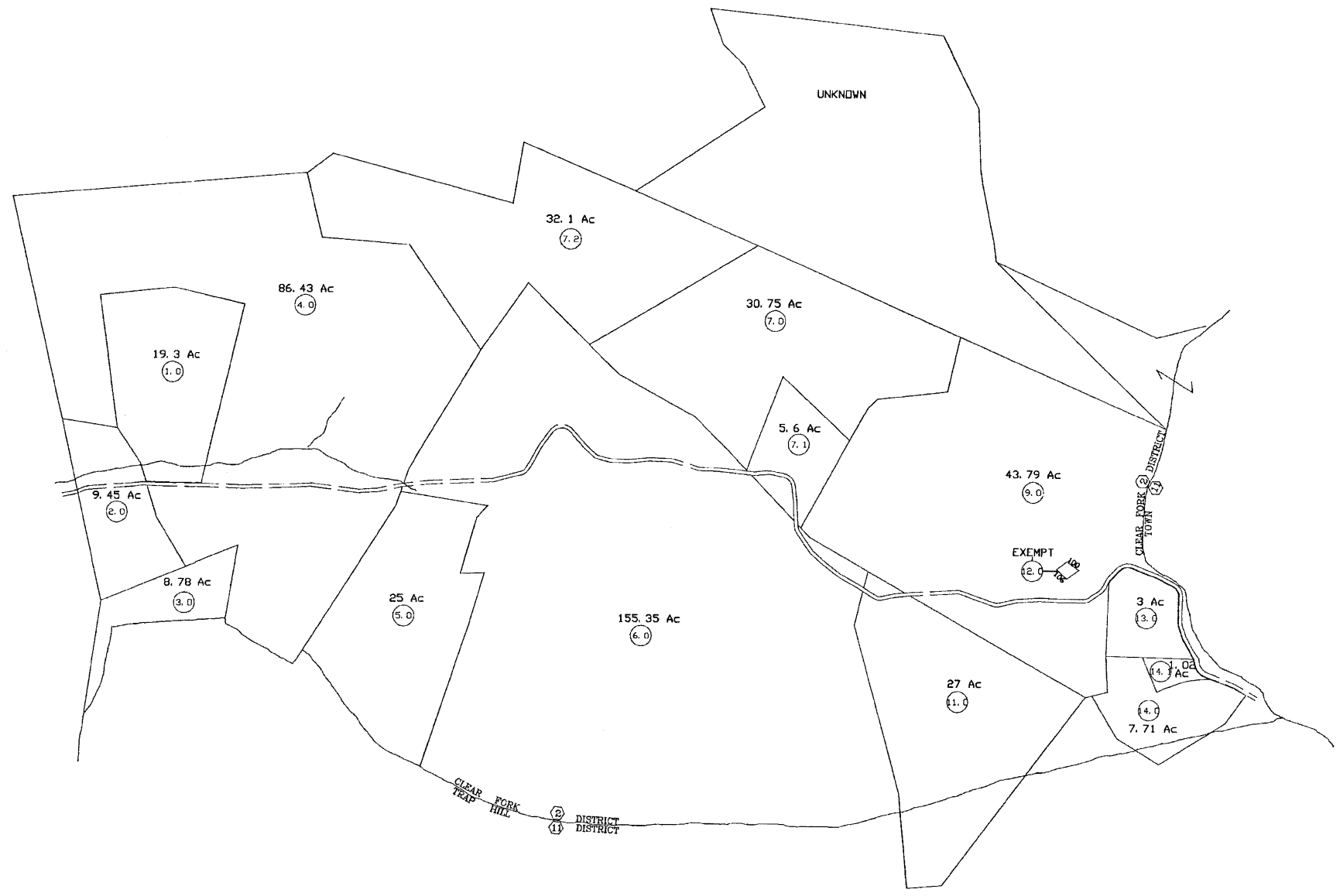


2-25

2-24



12-4

12-5

12-5

For Tax Purposes Only

Prepared by  
**RALEIGH COUNTY ASSESSOR'S OFFICE**  
 DREMA B. EVANS, ASSESSOR  
 BECKLEY, WV

**LEGEND**

Property line	—————	Original lot line	-----
Edge of pavement or roadway	=====	Deed lot number	(15)
Corporation line	-----	Parcel or index number	⊙
District line	-----	Improvement	o
County line	-----	Railroad	+++++
Waterways	~~~~~		
ED10 CHANGE	-----		

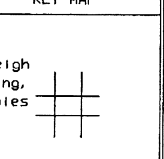
**REVISIONS**

1	09/19/06 CLG
2	
3	
4	
5	
6	
7	
8	

**RESTRICTION**

All tax maps created under the provisions of reappraisal legislation are the property of Raleigh County West Virginia and the reproduction, copying, distribution or sale of such tax maps or any copies thereof without the written permission of the Raleigh County Assessor is prohibited by law.

**KEY MAP**



**COUNTY OF RALEIGH**

Office of Assessor  
 Beckley, W. Va.

CLEAR FORK DISTRICT  
 District 02 Map No. 26

Date, Aerial Photography: 03-28-69 Map: 02/10/99  
 Photo No: 42 Scale: 1" = 400'