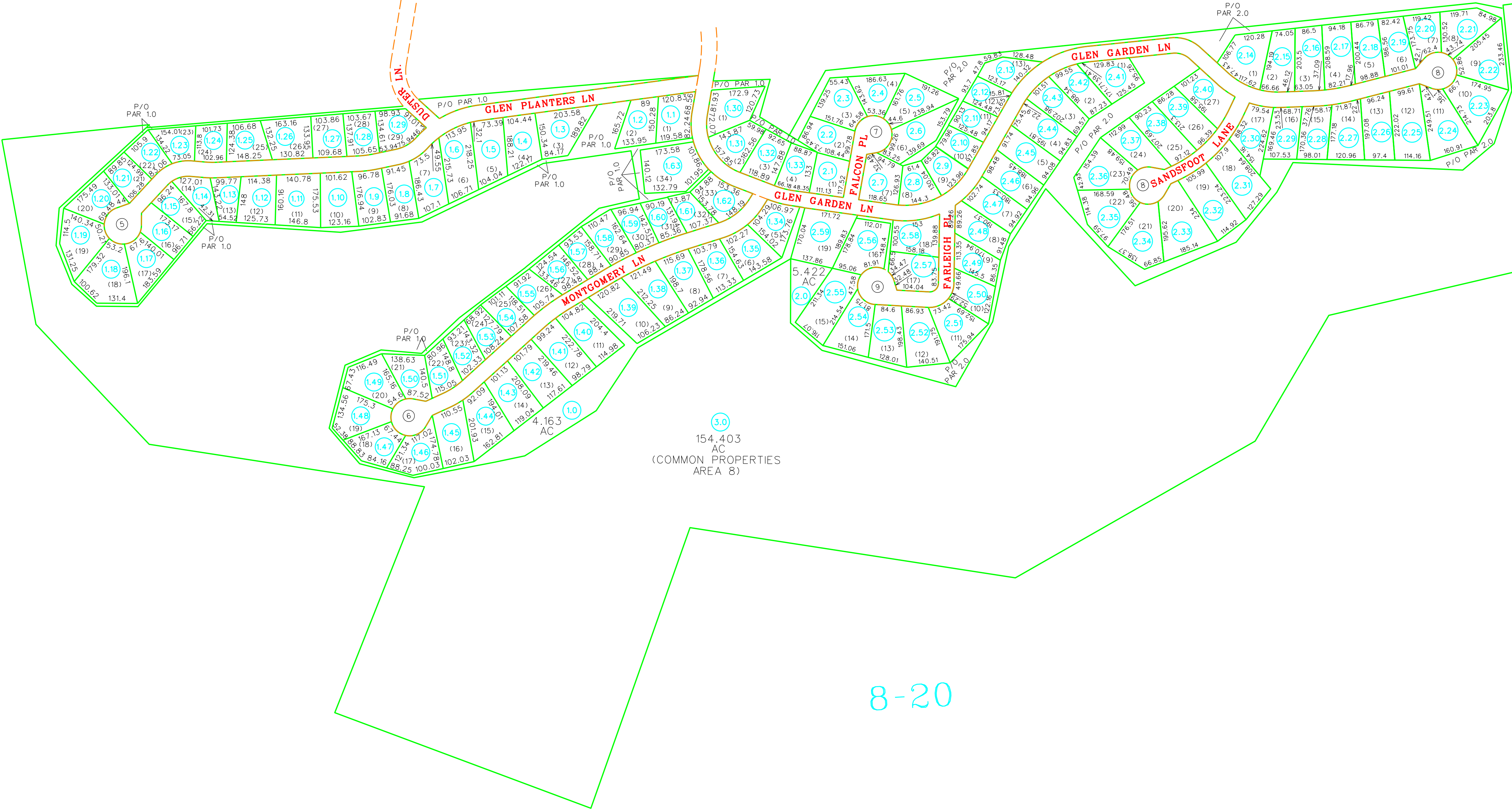
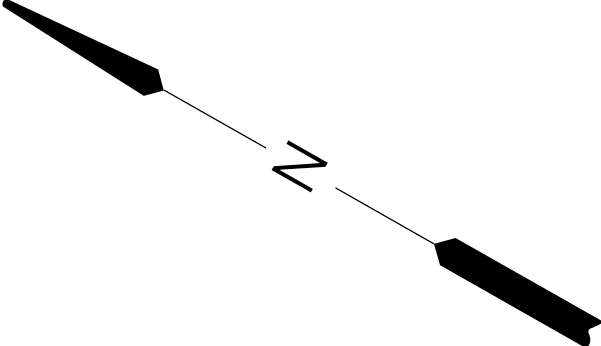


8-19D

8-19E

8-20



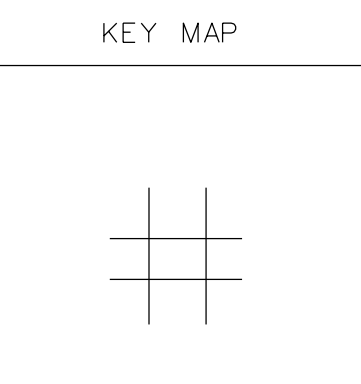
For Tax Purposes Only  
Prepared by  
RALEIGH COUNTY ASSESSOR'S OFFICE  
BECKLEY, WV

LEGEND	
Property line	Original lot line
Edge of pavement or roadway	Deed lot number (15)
Corporation line	Parcelor index number (19)
District line	Improvement (11)
County line	Railroad
Waterways	
2010 CHANGE	

REVISIONS	
1	12/16/04 CLG
2	
3	
4	
5	
6	
7	
8	

RESTRICTION

All tax maps created under the provisions of reappraisal legislation are the property of Raleigh County West Virginia and the reproduction, copying, distribution or sale of such tax maps or any copies thereof without the written permission of the Raleigh County Assessor is prohibited by law.



COUNTY OF RALEIGH  
Office of Assessor  
Beckley, W.Va.

SHADY SPRING DISTRICT  
District 08 MAP NO. 19F  
Date, Aerial Photography: Photo No:  
Date, Map: 08 AUG, 2002  
Scale: 1" = 200'