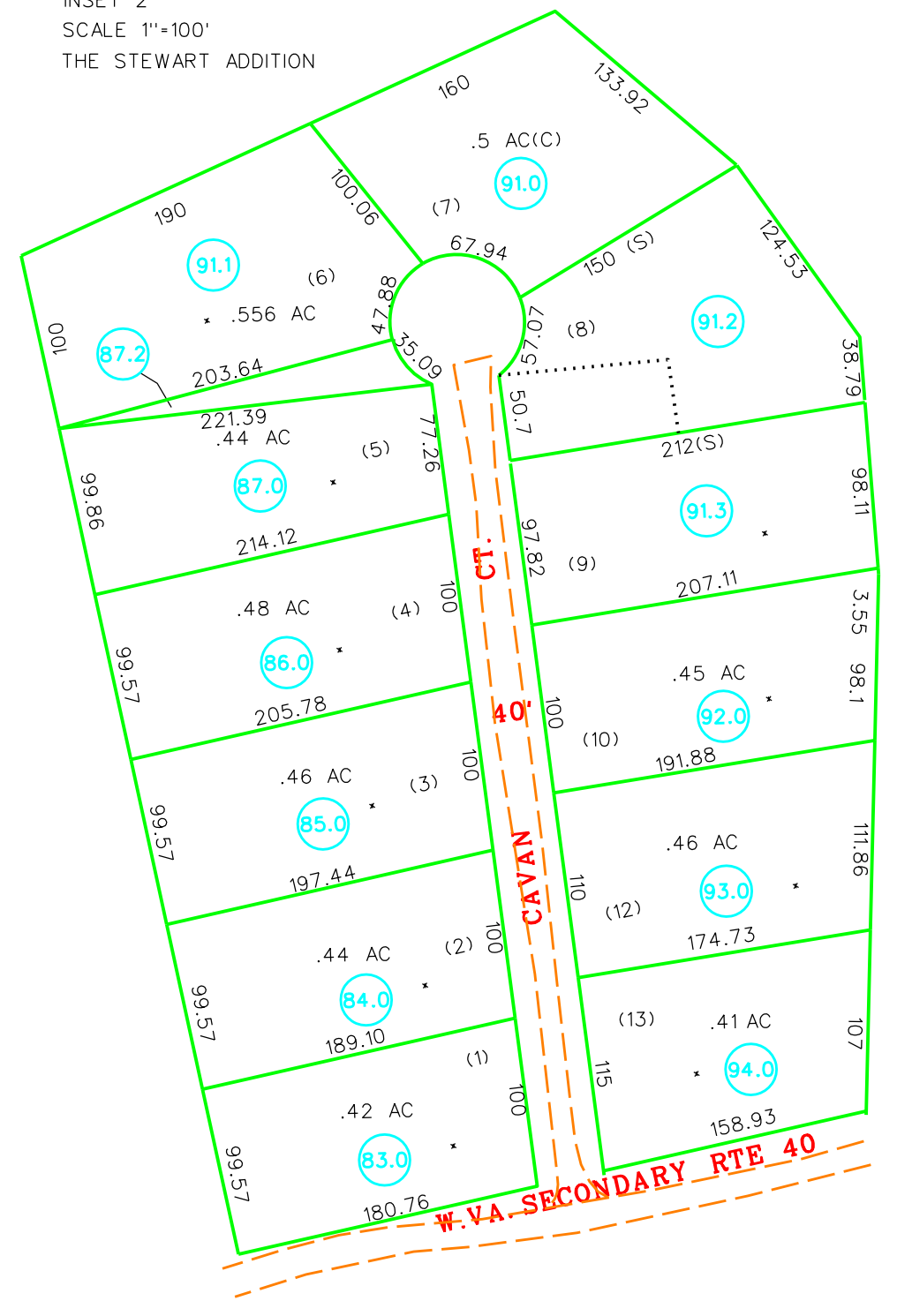


INSET 2
SCALE 1"=100'
THE STEWART ADDITION



8-26

SECTION 400

SECTION 400

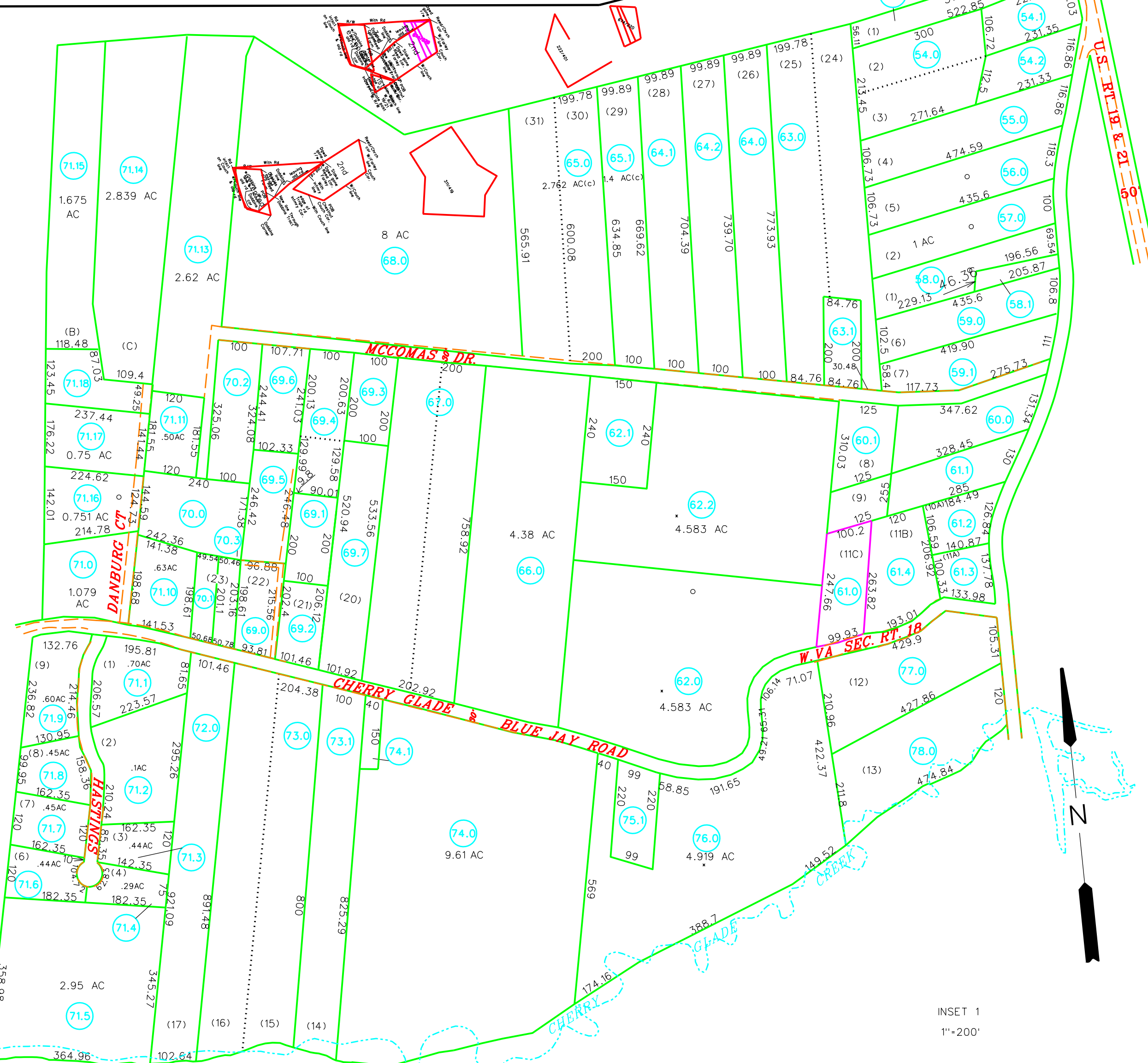
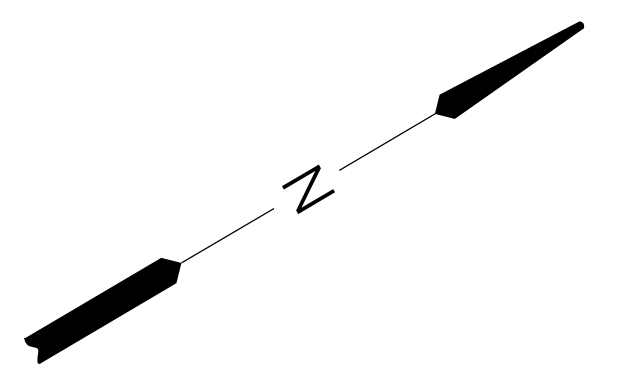
8-28

SECTION 200

200-3

8-28

200-2



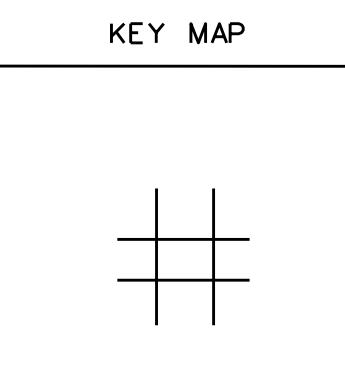
INSET 1
1"=200'

For Tax Purposes Only
Prepared by
RALEIGH COUNTY ASSESSOR'S OFFICE
BECKLEY, WV

| LEGEND | |
|-----------------------------|-----------------------------|
| Property line | Original lot line |
| Edge of pavement or roadway | Deed lot number (15) |
| Corporation line | Parcel or index number (99) |
| District line | Improvement |
| County line | Railroad |
| Waterways | |
| 2016 CHANGE | |

| REVISIONS | |
|-----------|--------------|
| 1 | 06/13/13 JLW |
| 2 | 02/22/14 PRB |
| 3 | 06/09/14 PRB |
| 4 | 07/11/14 PRB |
| 5 | 05/12/15 PRB |
| 6 | 06/25/15 CDB |
| 7 | 08/21/15 PRB |
| 8 | 04/13/16 KNH |
| 9 | 10/13/16 KNH |

RESTRICTION
All tax maps created under the provisions of reappraisal legislation are the property of Raleigh County West Virginia and the reproduction, copying, distribution or sale of such tax maps or any copies thereof without the written permission of the Raleigh County Assessor is prohibited by law.



COUNTY OF RALEIGH
Office of Assessor
Beckley, W.Va.

SHADY SPRING DISTRICT
District 8 Map No. 27
Date, Aerial Photography: Photo No:
Date, Map: FEB. 22, 1996
Scale: 1"=400'