

08-2005

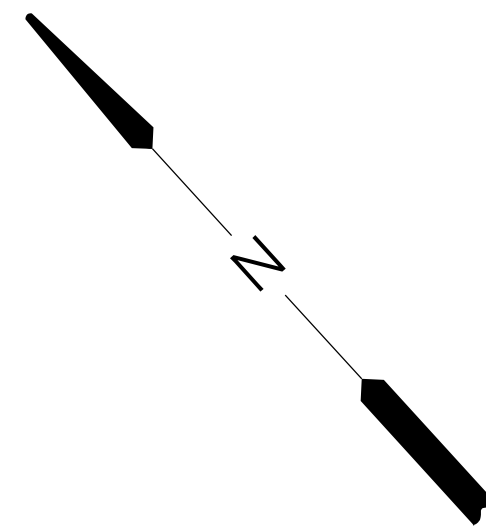
08-2005

08-2005

08-2005

08-28

STONEHEDGE ADD. #1



DIVISION LANE (50' R/W)

HARBOR LANE (40' R/W)

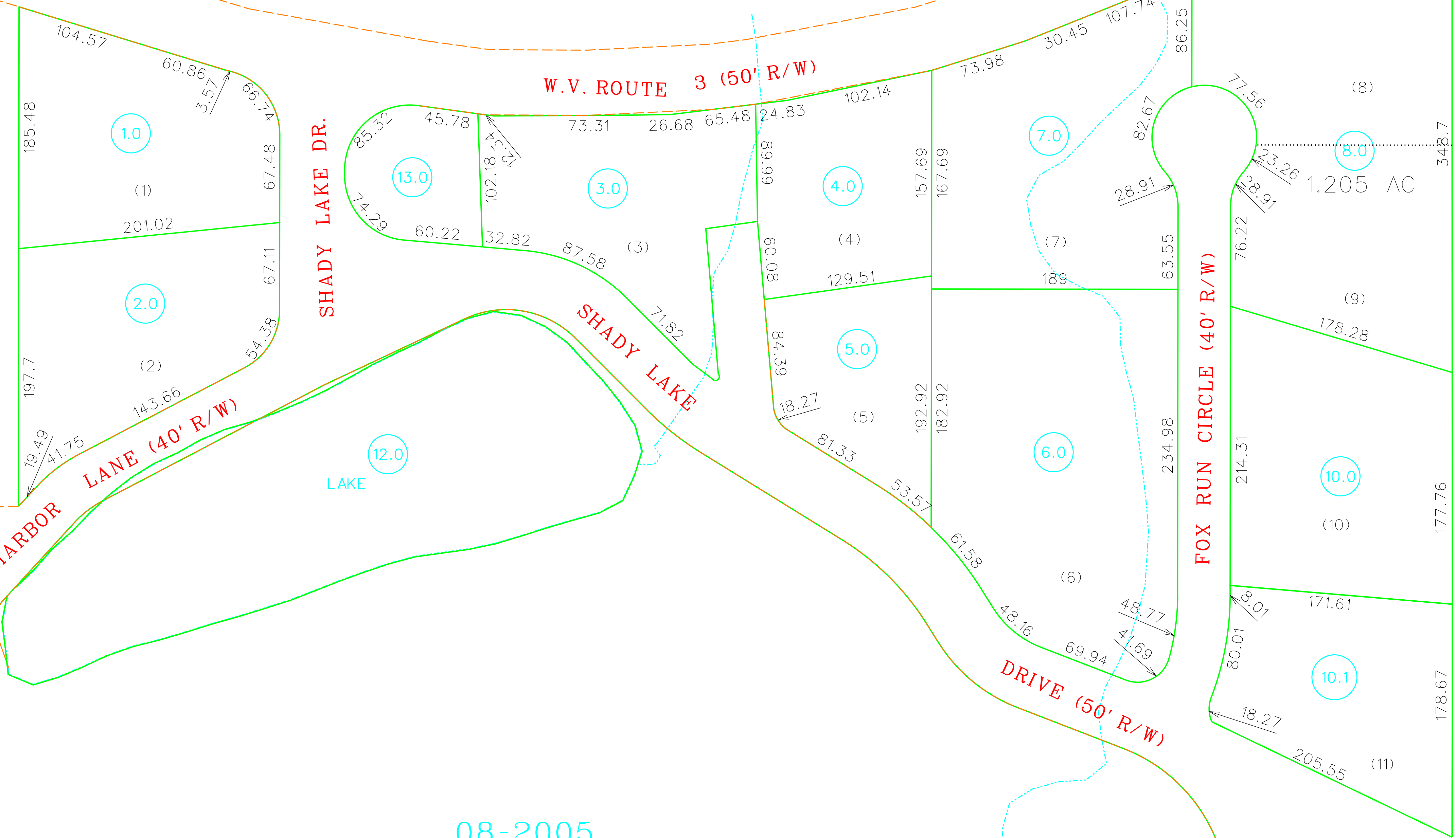
SHADY LAKE DR.

W.V. ROUTE 3 (50' R/W)

SHADY LAKE DRIVE (50' R/W)

FOX RUN CIRCLE (40' R/W)

TO HINTON



For Tax Purposes Only

Prepared by
RALEIGH COUNTY ASSESSOR'S OFFICE
BECKLEY, WV

LEGEND

Property line		Original lot line	
Edge of pavement or roadway		Deed lot number	(15)
Corporation line		Parcelor index number	
District line		Improvement	
County line		Railroad	
Waterways			
2010 CHANGE			

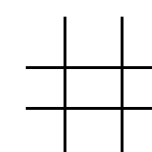
REVISIONS

1	07/15/97 CLG
2	08/14/00 CLG
3	07/24/01 CLG
4	
5	
6	
7	
8	

RESTRICTION

All tax maps created under the provisions of reappraisal legislation are the property of Raleigh County West Virginia and the reproduction, copying distribution or sale of such tax maps or any copies thereof without the written permission of the Raleigh County Assessor is prohibited by law.

KEY MAP



COUNTY OF RALEIGH

Office of Assessor
Beckley, W.Va.

SHADY DISTRICT
District 08 MAP NO. 5001

Date, Aerial Photography: Photo No:
Date, Map: AUGUST 23, 1996
Scale: 1" = 50'