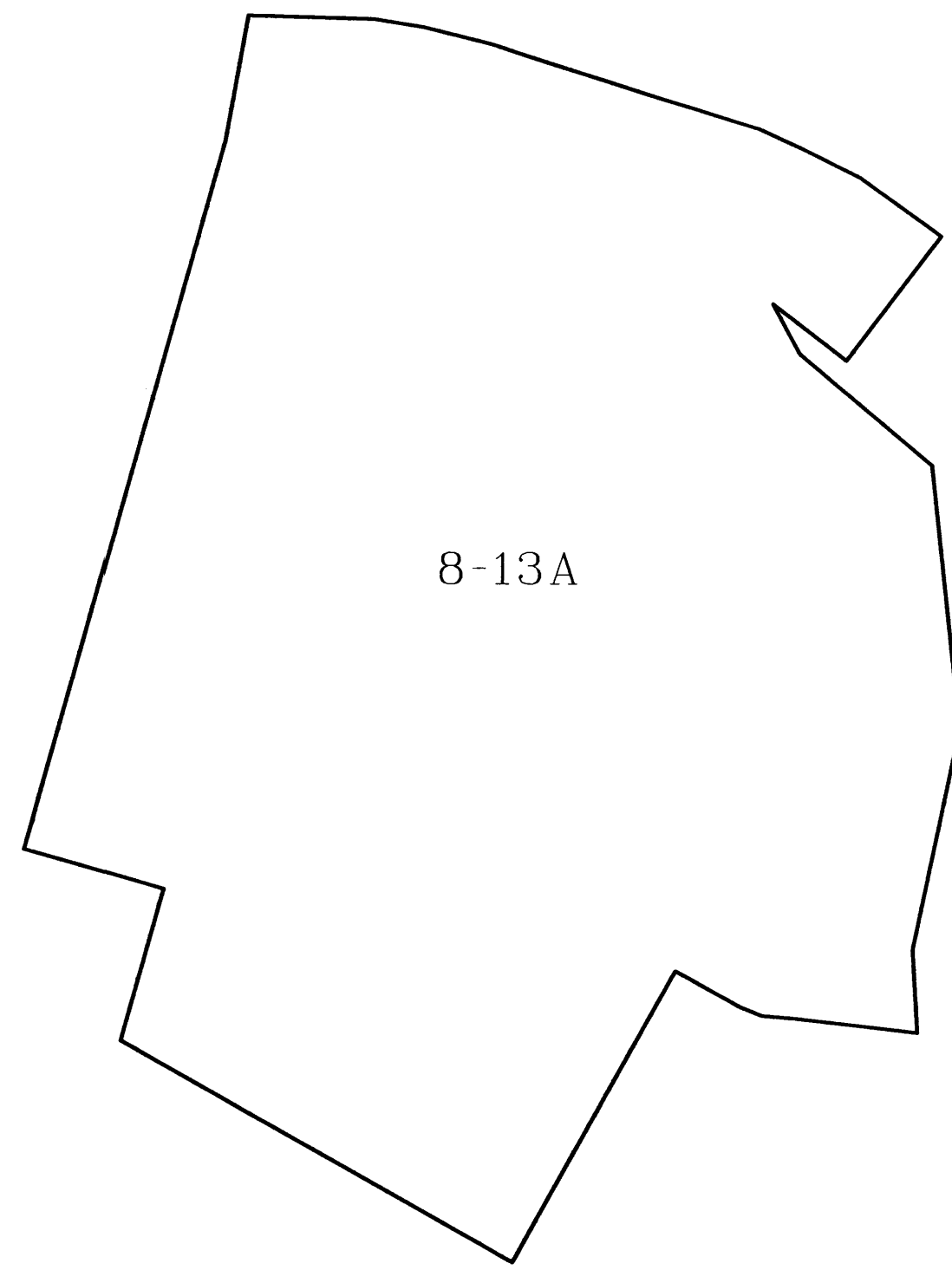
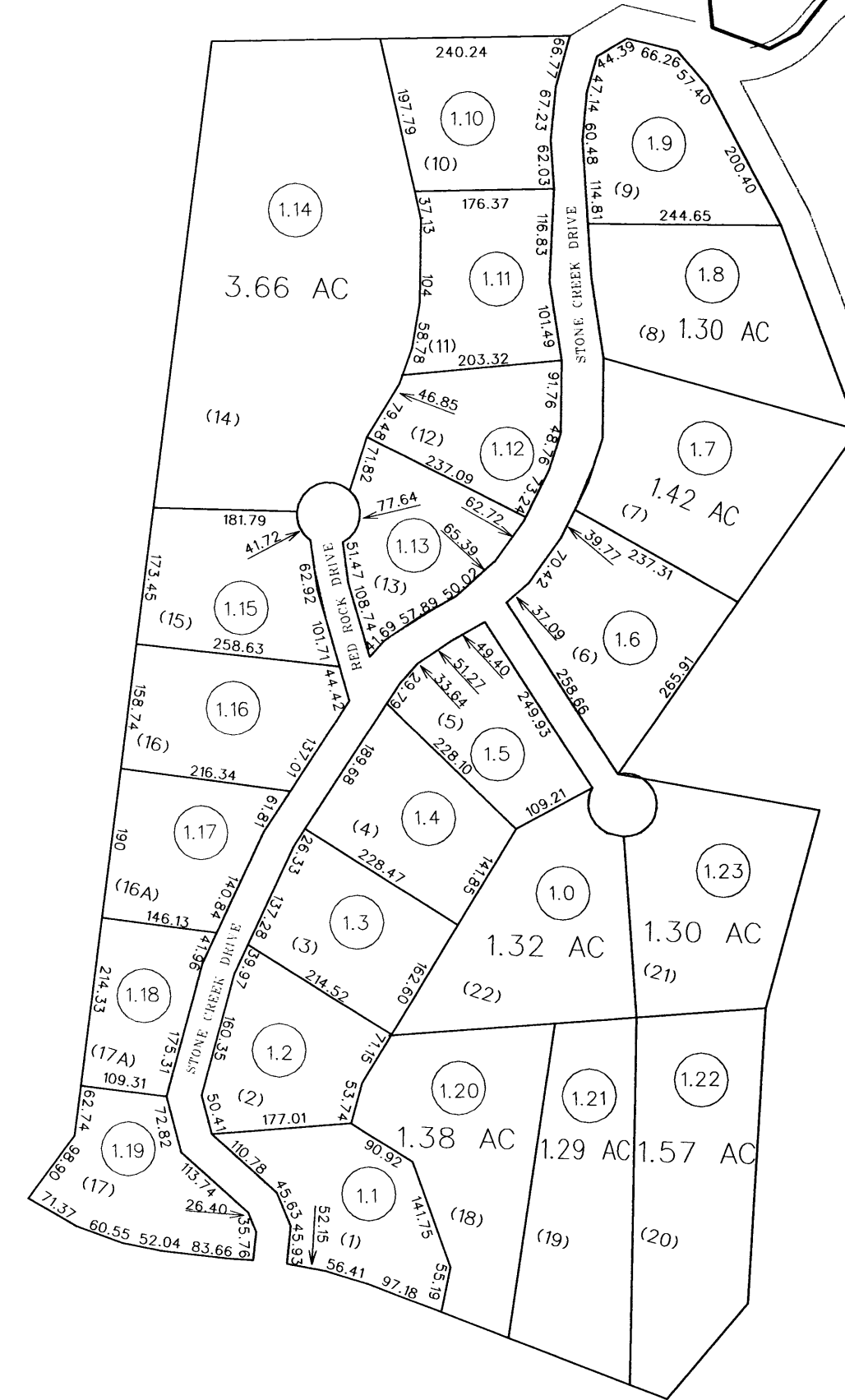


B-9A

8-13B



8-13A



For Tax Purposes Only

Prepared by
RALEIGH COUNTY ASSESSOR'S OFFICE
DREMA B. EVANS, ASSESSOR
BECKLEY, WV

LEGEND

Property line ————
Edge of pavement or roadway ————
Corporation line - - - - -
District line - - - - -
County line - - - - -
Waterways - - - - -
2012 CHANGE

Original lot line ————
Deed lot number (15)
Parcel or index number (99)
Improvement o
Railroad ————

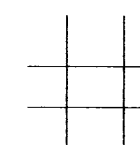
REVISIONS

- 1
- 2
- 3
- 4
- 5
- 6
- 7
- 8

RESTRICTION

All tax maps created under the provisions of reappraisal legislation are the property of Raleigh County West Virginia and the reproduction, copying, distribution or sale of such tax maps or any copies thereof without the written permission of the Raleigh County Assessor is prohibited by law.

KEY MAP



COUNTY OF RALEIGH

Office of Assessor
Beckley, W.Va.

SHADY SPRING DISTRICT
District 08 MAP NO. 13C

Date, Aerial Photography:
Photo No:

Date, Map: 21 NOV., 2008
Scale: 1" = 200'