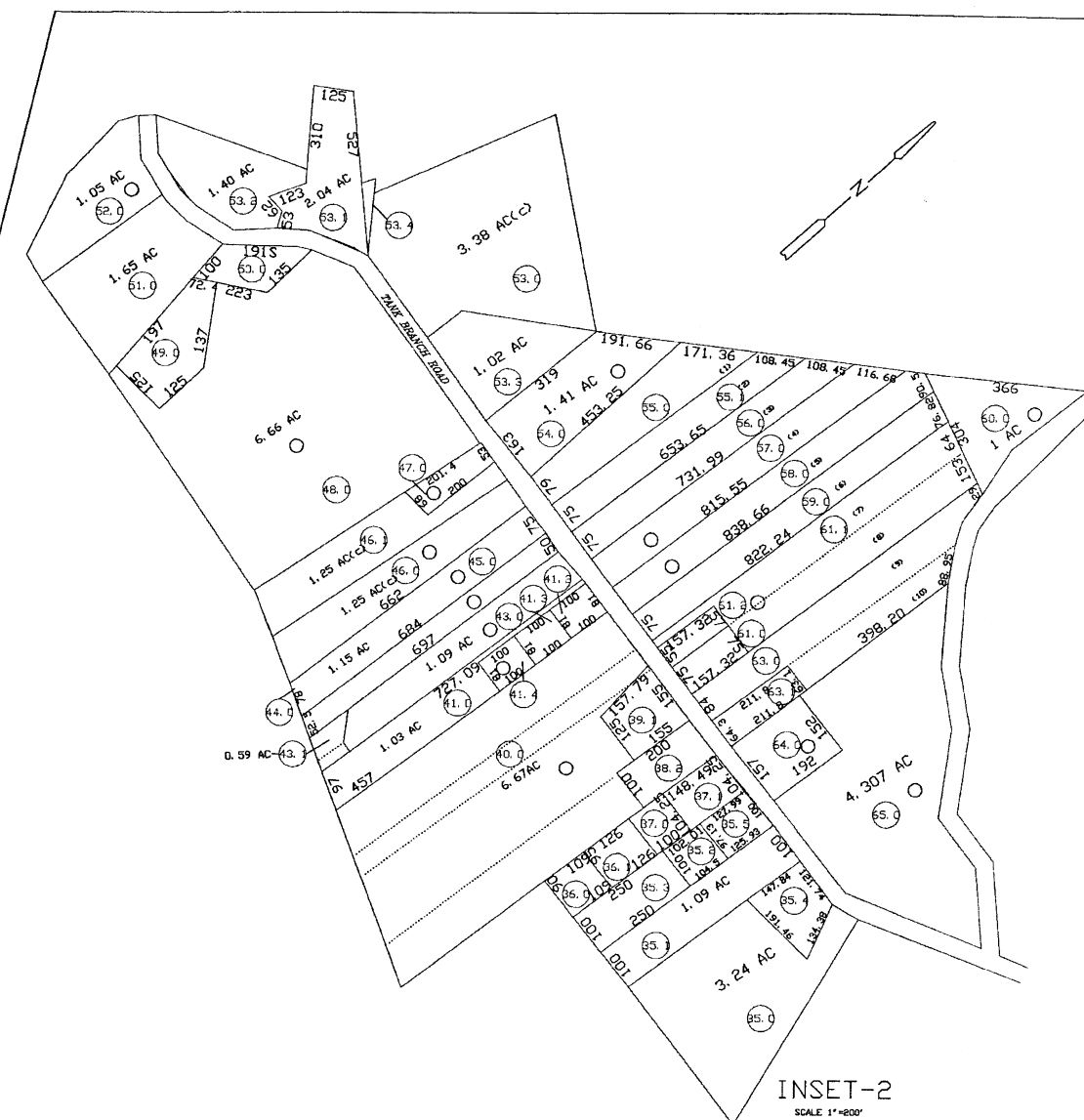
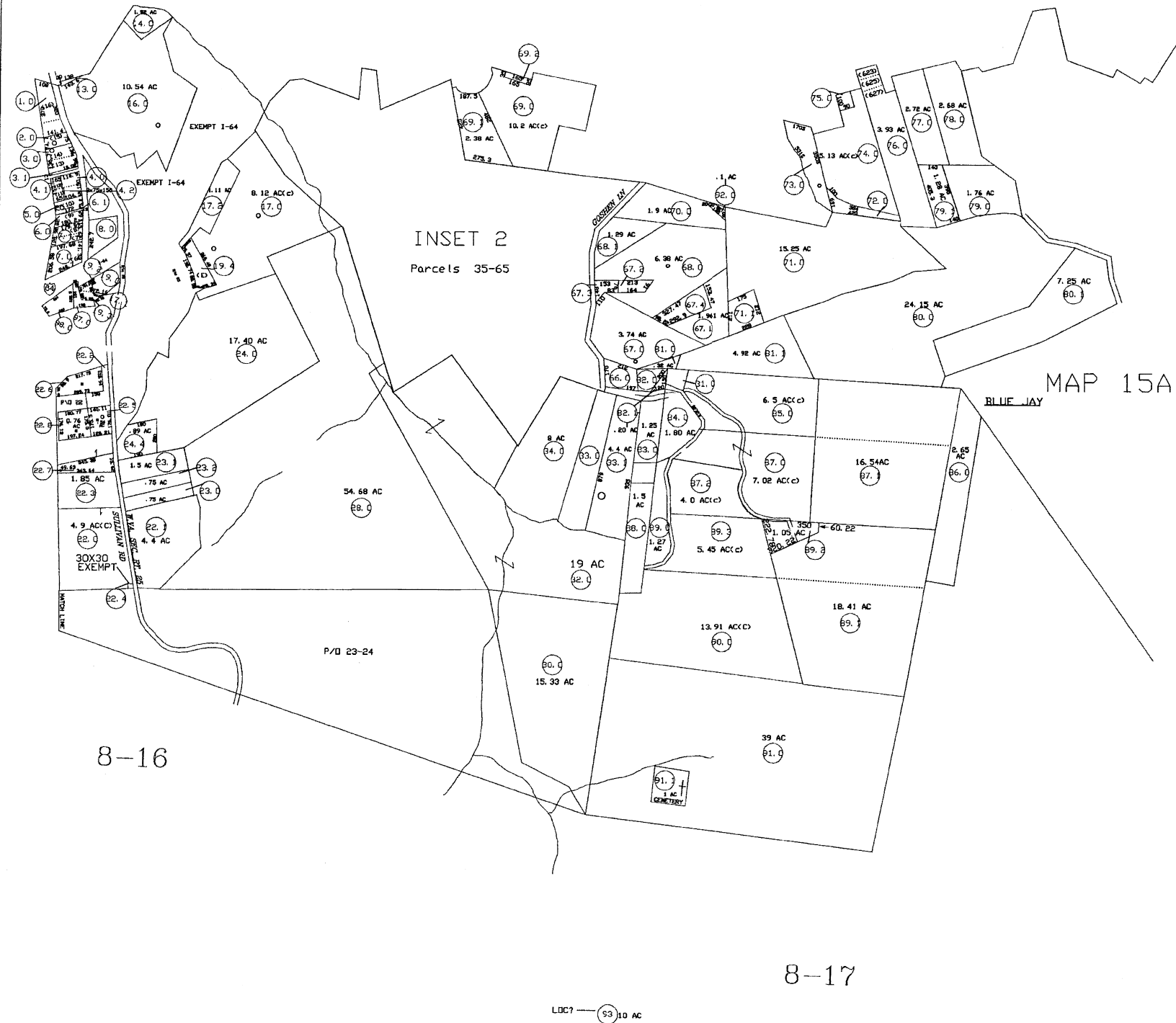
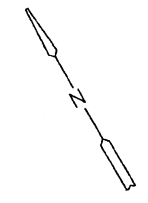


SECTION-100

BEAVER



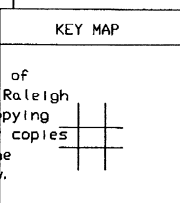
For Tax Purposes Only  
Prepared by  
RALEIGH COUNTY ASSESSOR'S OFFICE  
DREMA B. EVANS, ASSESSOR  
BECKLEY, WV

LEGEND	
Property line	Original lot line
Edge of pavement or roadway	Seed lot number
Corporation line	Parcel or index number
District line	Improvement
County line	Railroad
Veterans	
2010 CHANGE	

REVISIONS
1 09/17/03 CLG
2 10/07/04 CLG
3 02/16/06 CLG
4 02/09/07 CLG
5 03/04/08 ADL
6 03/24/08 ADL
7 03/24/08 ADL
8 05/21/09 TPB
9 12/10/09 TPB

RESTRICTION

All tax maps created under the provisions of reappraisal legislation are the property of Raleigh County West Virginia and the reproduction, copying, distribution or sale of such tax maps or any copies thereof without the written permission of the Raleigh County Assessor is prohibited by law.



COUNTY OF RALEIGH

Office of Assessor  
Beckley, W. Va.

SHADY SPRING DISTRICT  
District 08 Map No. 15

Date, Aerial Photography: 03-28-59 Map: OCT. 25, 1995  
Photo No: 90 Scale: 1" = 400'