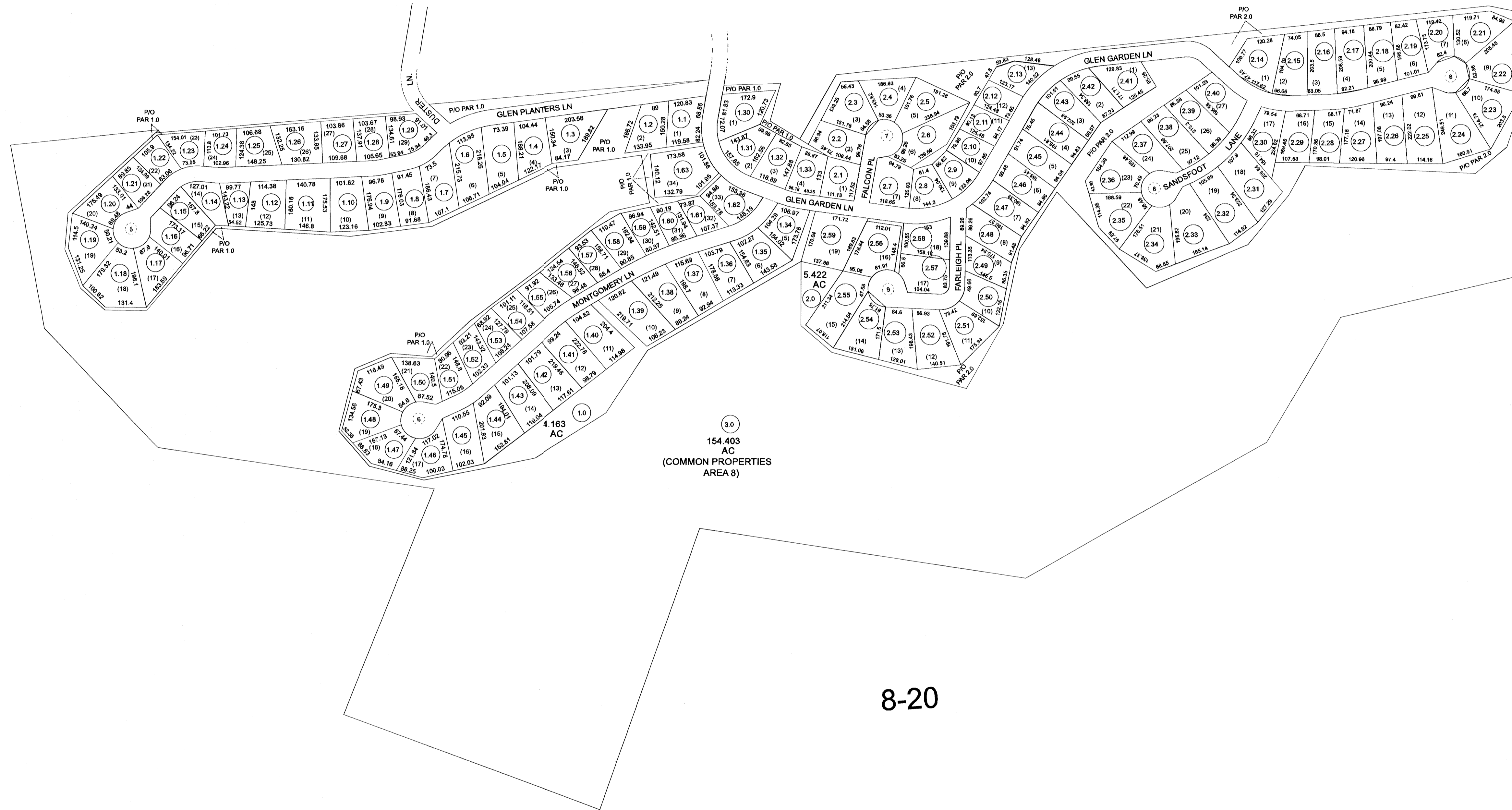
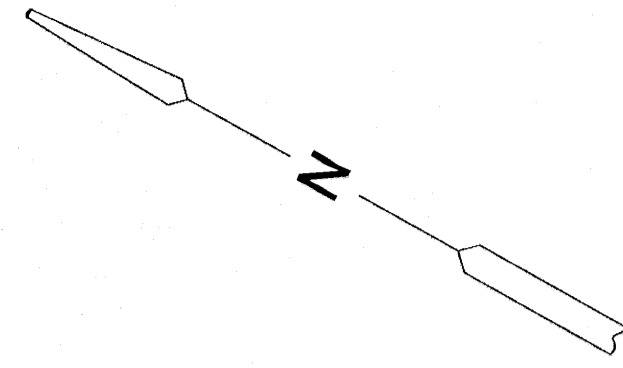


8-19D

8-19E



8-20

For Tax Purposes Only

Prepared by  
RALEIGH COUNTY ASSESSOR'S OFFICE  
DREMA B. EVANS, ASSESSOR  
BECKLEY, WV

LEGEND

Property line	—————	Original lot line	-----
Edge of pavement or roadway	=====	Dead lot number	(15)
Corporation line	-----	Parcel or lot number	(69)
Distilled line	-----	Improvement	○
County line	-----	Railroad	—+—+—+—
Waterways	~~~~~		
2005 CHANGE			

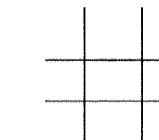
REVISIONS

1	12/16/04 CLG
2	
3	
4	
5	
6	
7	
8	

RESTRICTION

All tax maps created under the provisions of reappraisal legislation are the property of Raleigh County West Virginia and the reproduction, copying, distribution or sale of such tax maps or any copies thereof without the written permission of the Raleigh County Assessor is prohibited by law.

KEY MAP



COUNTY OF RALEIGH

Office of Assessor

Beckley, W.Va.

SHADY SPRING DISTRICT

District 08 MAP NO. 19F

Date Aerial Photography:  
Photo No:

Date Map: 08 AUG, 2002  
Scale: 1" = 200'