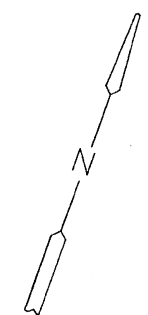
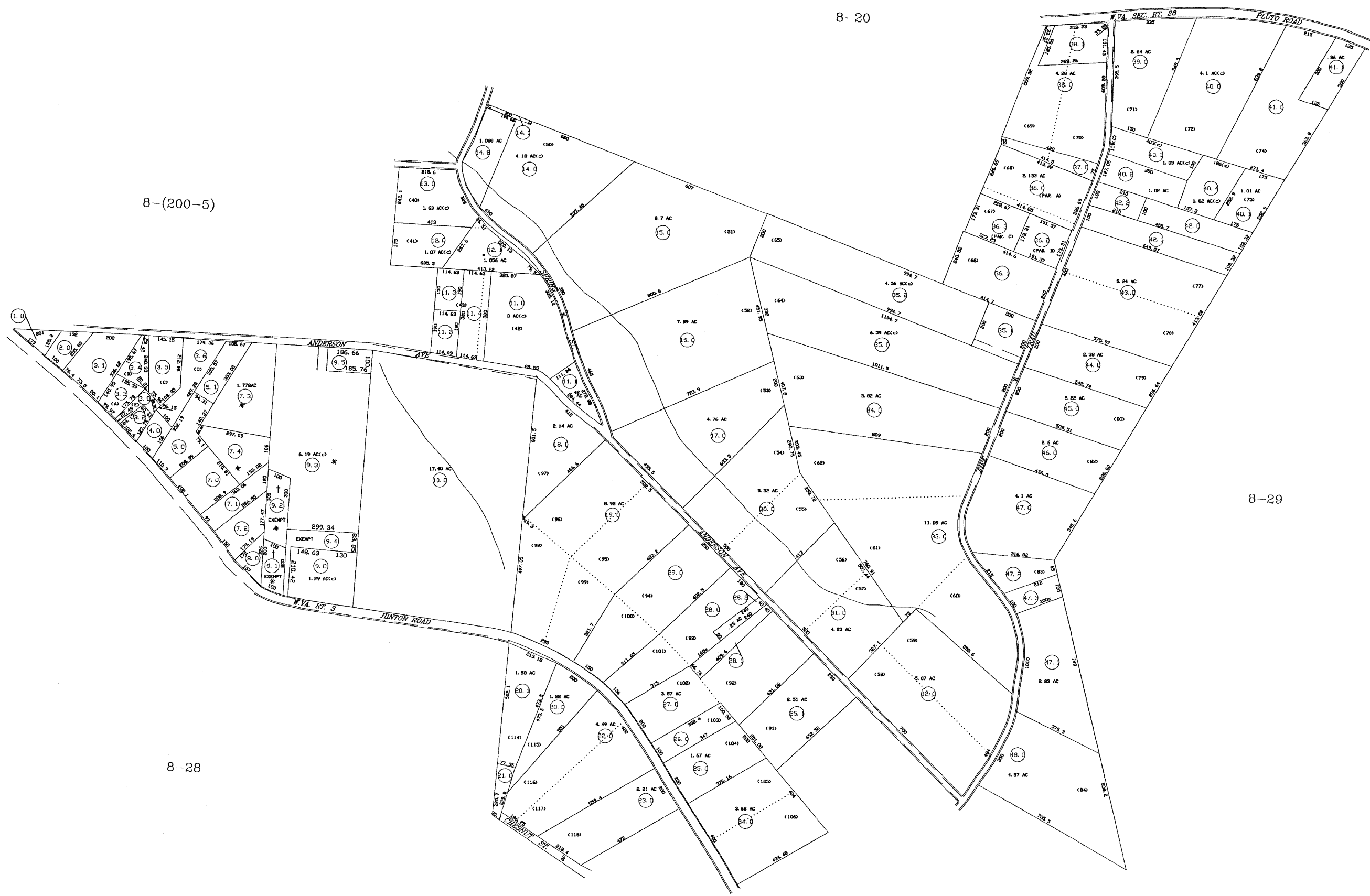


8-(200-5)

8-29

8-28

8-(200-7)



For Tax Purposes Only

Prepared by
RALEIGH COUNTY ASSESSOR'S OFFICE
 DREMA B. EVANS, ASSESSOR
 BECKLEY, WV

LEGEND

Property line	—————	Original lot line
Edge of pavement or roadway	—————	Deed lot number	(15)
Corporation line	—————	Parcel or index number	99
District line	—————	Improvement	—————
County line	—————	Railroad	—————
Waterway	—————		
2010 CHANGE	—————		

REVISIONS

1	11/17/99	CLG
2	01/20/00	CLG
3	02/15/01	CLG
4	04/07/04	CLG
5	12/19/05	CLG
6	11/06/06	CLG
7	02/12/07	CLG
8	03/18/08	ADL
9	02/19/09	TPB

RESTRICTION

All tax maps created under the provisions of reappraisal legislation are the property of Raleigh County West Virginia and the reproduction, copying, distribution or sale of such tax maps or any copies thereof without the written permission of the Raleigh County Assessor is prohibited by law.

KEY MAP



COUNTY OF RALEIGH

Office of Assessor
 Beckley, W. Va.

SHADY SPRING DISTRICT
 District 8 Map No. 200-6

Date, Aerial Photography:
 Photo No:

Date, Map: NOV. 1996
 Scale: 1"=200'