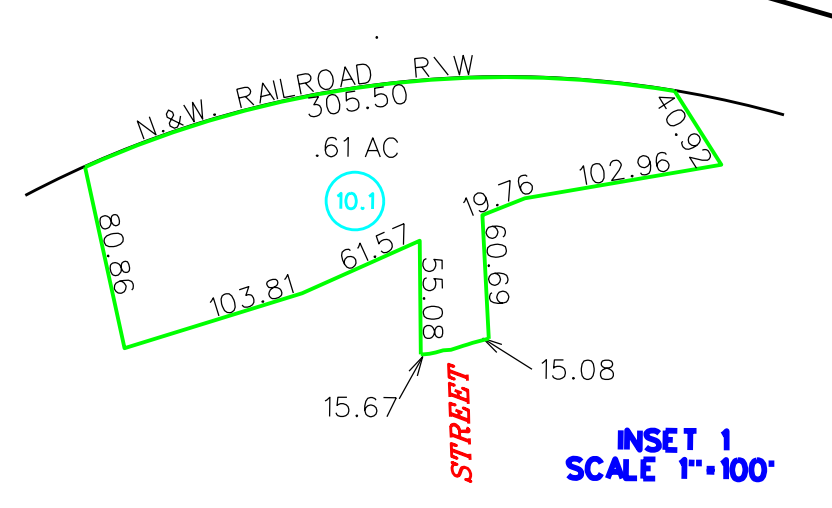


9-11

- 28.0 30.5 AC
- 30.0 16.64 AC(c)
- 34.0 .55 AC
- 35.0 .73 AC



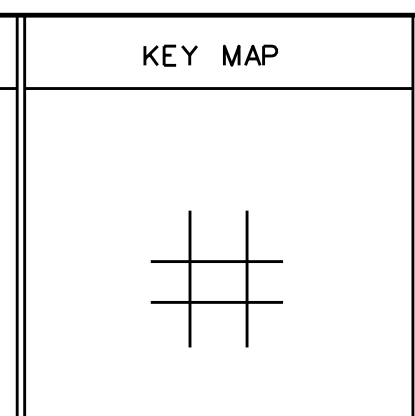
For Tax Purposes Only
 Prepared by
 RALEIGH COUNTY ASSESSOR'S OFFICE
 BECKLEY, WV

LEGEND	
Property line	—
Edge of pavement or roadway	—
Corporation line	—
District line	—
County line	—
Waterways	—
2011 CHANGE	—
Original lot line	— (15)
Deed lot number	— (99)
Parcel index number	— (99)
Improvement	— (o)
Railroad	—

REVISIONS	
1	09/15/00 CLG
2	12/10/02 CLG
3	10/27/03 CLG
4	03/02/10 TPB
5	08/28/15 CDB
6	
7	
8	

RESTRICTION

All tax maps created under the provisions of reappraisal legislation are the property of Raleigh County West Virginia and the reproduction, copying, distribution or sale of such tax maps or any copies thereof without the written permission of the Raleigh County Assessor is prohibited by law.



COUNTY OF RALEIGH
 Office of Assessor
 Beckley, W.Va.

SLAB FORK DISTRICT
 District 9 MAP NO. 12

Date, Aerial Photography: Photo No:
 Date, Map: MAR. 2, 1999
 Scale: 1" = 800'