

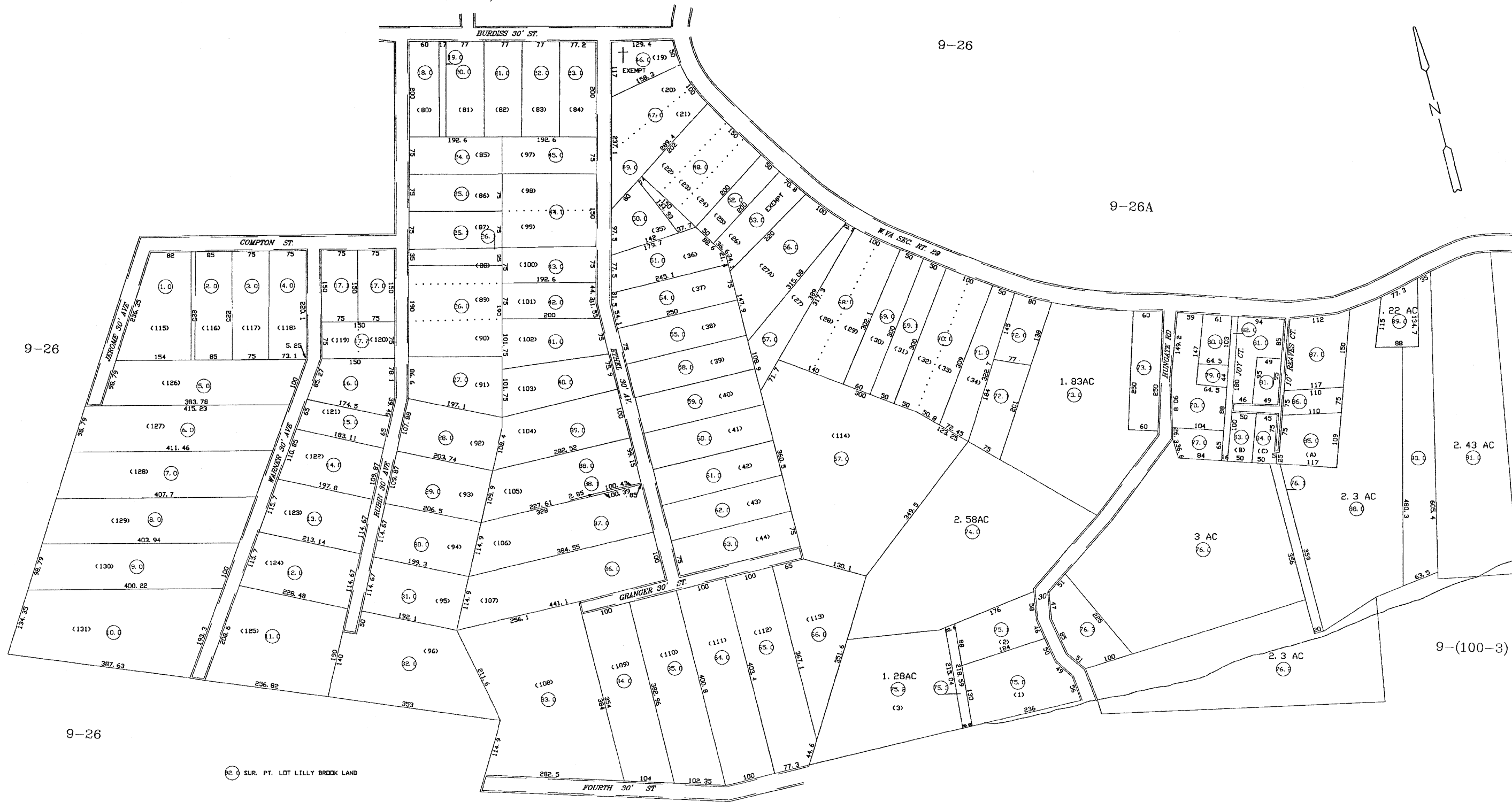
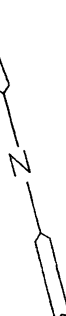
9-(100-1)

9-26

9-26A

9-26

9-26



(82.0) SUR. PT. LOT LILLY BROOK LAND

9-(100-4)

For Tax Purposes Only

Prepared by
RALEIGH COUNTY ASSESSOR'S OFFICE
DREMA B. EVANS, ASSESSOR
BECKLEY, WV

LEGEND	
Property line	—
Edge of pavement or roadway	—
Corporation line	—
District line	—
County line	—
Waterways	—
2010 CHANGE	—
Original lot line
Deed lot number	(15)
Parcel or index number	(15)
Improvement	o
Railroad	—+—

REVISIONS	
1	05/05/05 CLG
2	05/19/08 ADL
3	
4	
5	
6	
7	
8	

RESTRICTION	
All tax maps created under the provisions of reappraisal legislation are the property of Raleigh County West Virginia and the reproduction, copying, distribution or sale of such tax maps or any copies thereof without the written permission of the Raleigh County Assessor is prohibited by law.	

KEY MAP	

COUNTY OF RALEIGH
Office of Assessor
Beckley, W. Va.

SLAB FORK DISTRICT
District 9 MAP 100-2
Date, Aerial Photography: Photo No.
Date, Map: MAR 10, 1999
Scale: 1"=100'