

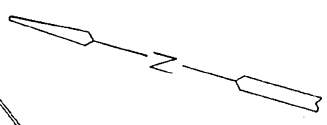
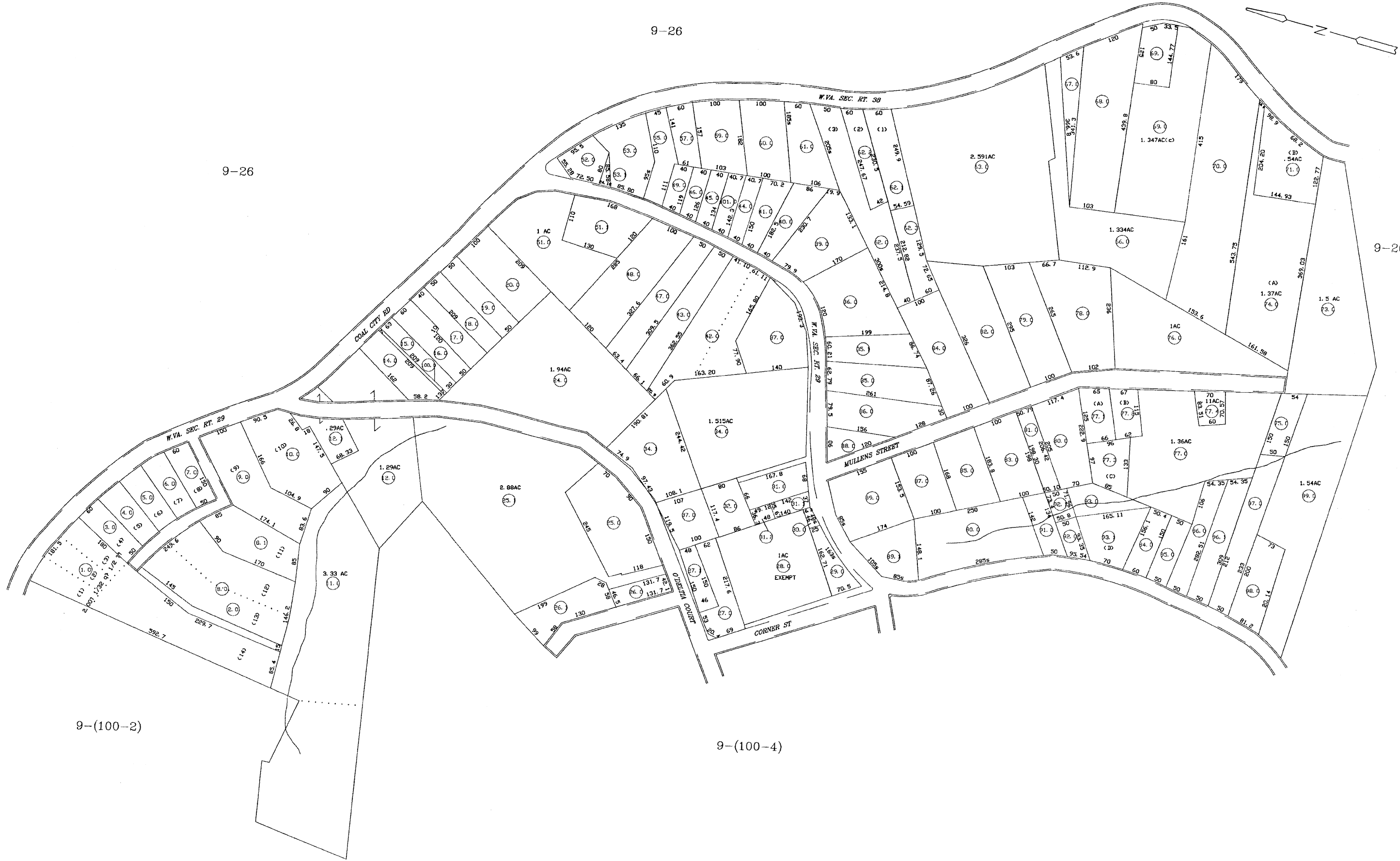
9-26

9-26

9-26

9-(100-2)

9-(100-4)



For Tax Purposes Only

Prepared by

RALEIGH COUNTY ASSESSOR'S OFFICE
DREMA B. EVANS, ASSESSOR
BECKLEY, WV

LEGEND

Property line	—————	Original lot line	-----
Edge of pavement or roadway	=====	Deed lot number	(15)
Corporation line	-----	Parcel or index number	⊙
District line	-----	Improvement	○
County line	-----	Railroad	+
Waterways	~~~~~		
2010 CHANGE	-----		

REVISIONS

1	07/26/00 CLG
2	11/29/01 CLG
3	06/13/06 CLG
4	02/18/09 TPB
5	
6	
7	
8	

RESTRICTION

All tax maps created under the provisions of reappraisal legislation are the property of Raleigh County West Virginia and the reproduction, copying, distribution or sale of such tax maps or any thereof without the written permission of the Raleigh County Assessor is prohibited by law.

KEY MAP



COUNTY OF RALEIGH

Office of Assessor
Beckley, W. Va.

SLAB FORK DISTRICT District 9 MAP 100-3

Date, Aerial Photography:
Photo No:

Date, Map: MAR 10, 1999
Scale: 1"=100'