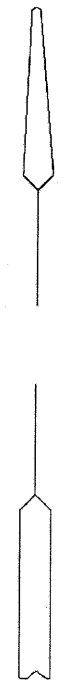
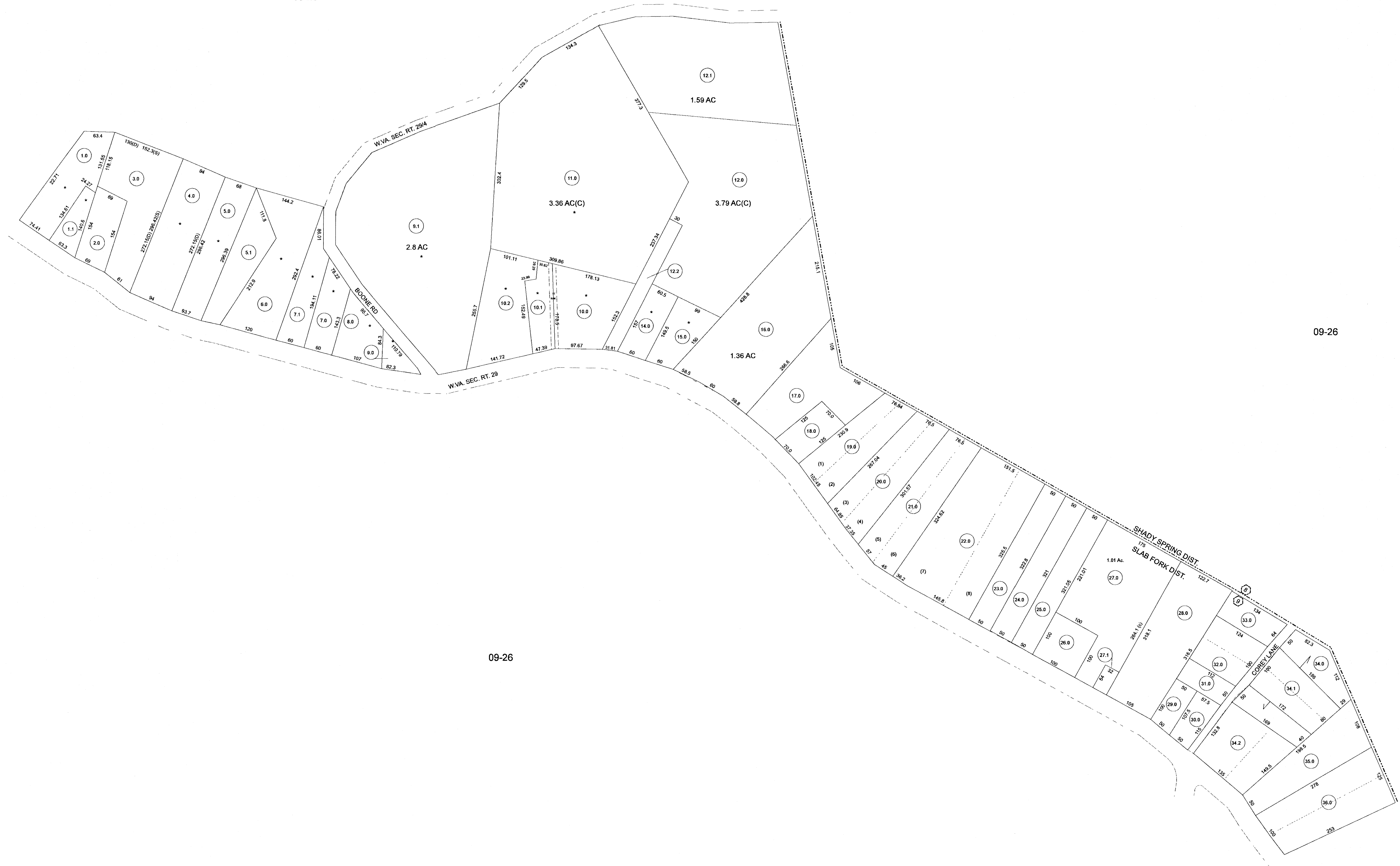


09-26



09-26

09-26

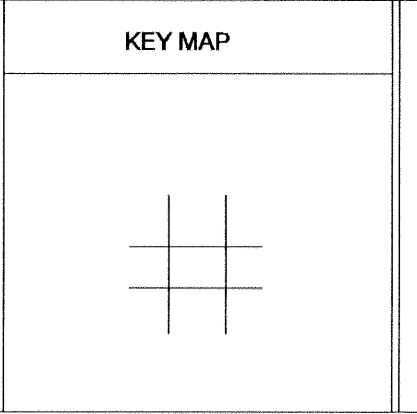
For Tax Purposes Only
 Prepared by
RALEIGH COUNTY ASSESSOR'S OFFICE
DREMA B. EVANS, ASSESSOR
BECKLEY, WV

LEGEND	
Property line	—————
Edge of pavement or roadway	—————
Corporation line	—————
District line	—————
County line	—————
Waterways	—————
2000 CHANGE	—————
Original lot line	-----
Deed lot number	(15)
Parcel or index number	(8)
Improvement	o
Railroad	—+—+—+—

REVISIONS	
1	04/06/98 CLG
2	
3	
4	
5	
6	
7	
8	

RESTRICTION

All tax maps created under the provisions of reappraisal legislation are the property of Raleigh County West Virginia and the reproduction, copying, distribution or sale of such tax maps or any copies thereof without the written permission of the Raleigh County Assessor is prohibited by law.



COUNTY OF RALEIGH

Office of Assessor
 Beckley, W.Va.

SLAB FORK DISTRICT
 DISTRICT 09 MAP NO. 26A

Date, Aerial Photography: _____
 Photo No: _____

Date, Map: SEPT. 11, 1997
 Scale: 1" = 100'