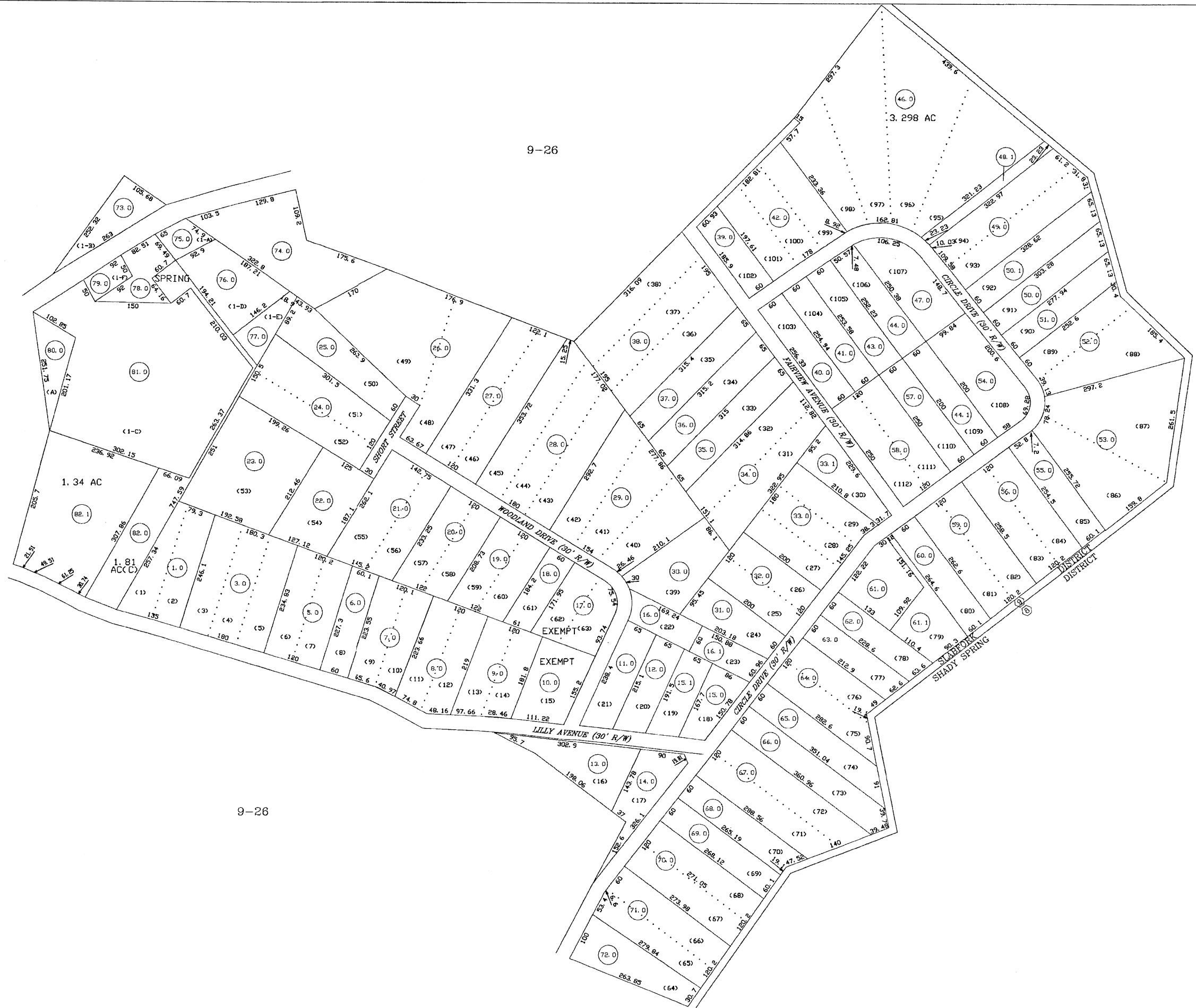


9-26

9-26

8-37

9-26



LILLY COURT ADDITION

For Tax Purposes Only
Prepared by
RALEIGH COUNTY ASSESSOR'S OFFICE
DREMA B. EVANS, ASSESSOR
BECKLEY, WV

LEGEND	
Property line	_____
Edge of pavement or roadway	_____
Corporation line	_____
District line	_____
County line	_____
Veterans	_____
2010 CHANGE	_____
Original lot line
Deed lot number	(15)
Parcel or index number	(99)
Improvement	o
Railroad	—+—

REVISIONS	
1	05/19/08 ADL
2	
3	
4	
5	
6	
7	
8	

RESTRICTION

All tax maps created under the provisions of reappraisal legislation are the property of Raleigh County West Virginia and the reproduction, copying, distribution or sale of such tax maps or any copies thereof without the written permission of the Raleigh County Assessor is prohibited by law.

KEY MAP	
	##

COUNTY OF RALEIGH

Office of Assessor
Beckley, W. Va.

SLAB FORK DISTRICT
DISTRICT 09 MAP NO. 26C

Date, Aerial Photography: _____
Photo No: _____

Date, Map: APRIL 13, 1998
Scale: 1" = 100'