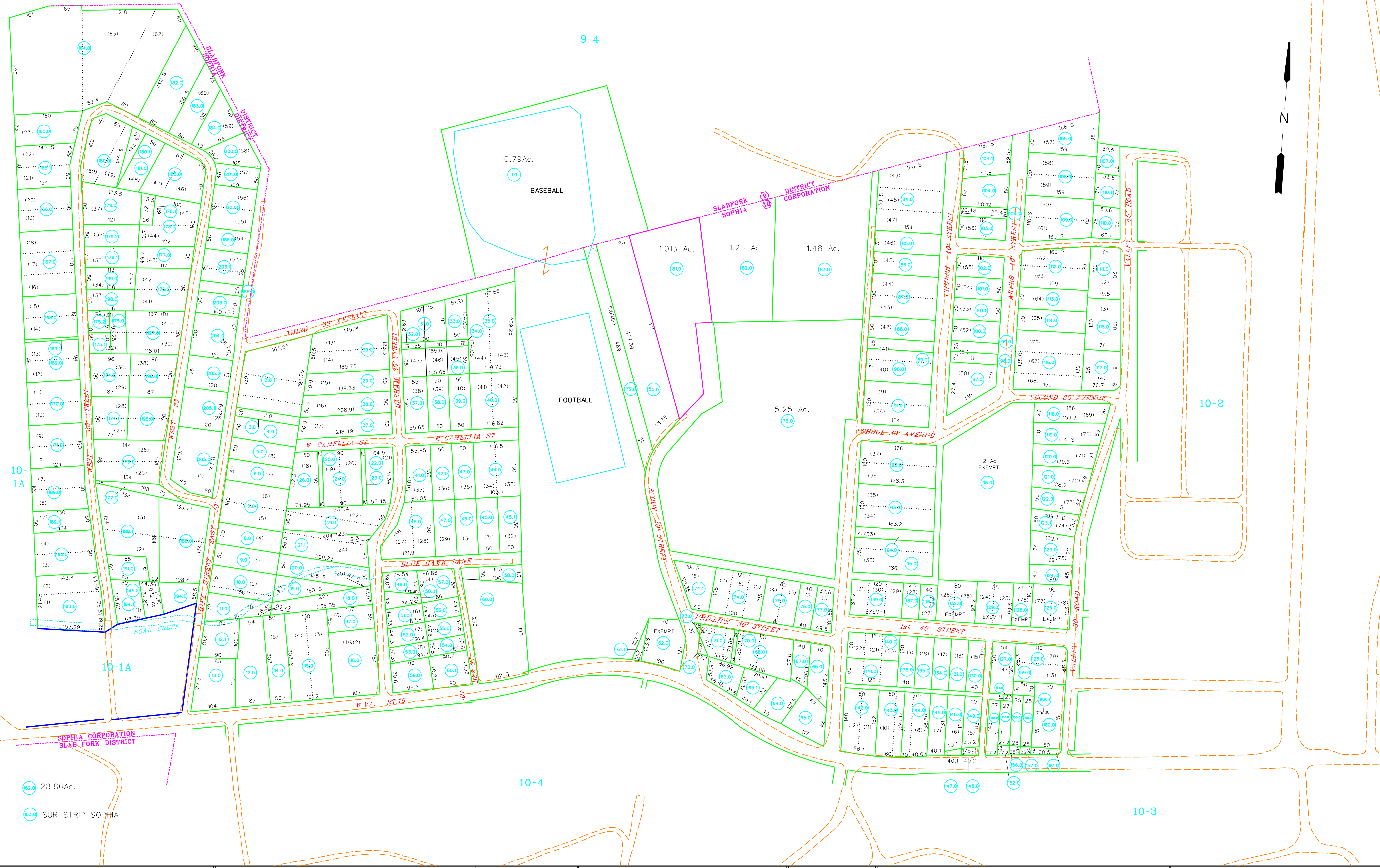
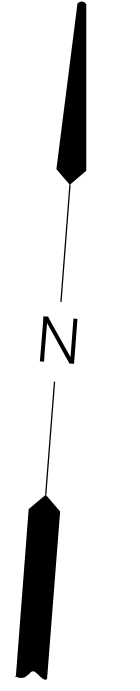


9-4



10-1A

10-1A

10-2

10-4

10-3

28.86Ac.
SUR. STRIP SOPHIA

For Tax Purposes Only
Prepared by
RALEIGH COUNTY ASSESSOR'S OFFICE
BECKLEY, WV

LEGEND	
Property line	Original line
Edge of pavement or roadway	Deed lot number (15)
Corporation line	Parcel or index number (99)
District line	Improvement (O)
County line	Railroad
Waterways	
2015 CHANGE	

REVISIONS	
1	10/01/02 CLG
2	10/22/03 CLG
3	04/24/06 CLG
4	05/10/08 ADL
5	03/28/14 CDB
6	06/02/16 PRB
7	
8	

RESTRICTION

All tax maps created under the provisions of reappraisal legislation are the property of Raleigh County West Virginia and the reproduction, copying distribution or sale of such tax maps or any copies thereof without the written permission of the Raleigh County Assessor is prohibited by law.

KEY MAP

COUNTY OF RALEIGH
Office of Assessor
Beckley, W.Va.

SOPHIA CORPORATION
District 10 MAP No. 1
Date, Aerial Photography: Photo No:
Date, Map: FEBRUARY 22, 1996
Scale: 1" = 100'