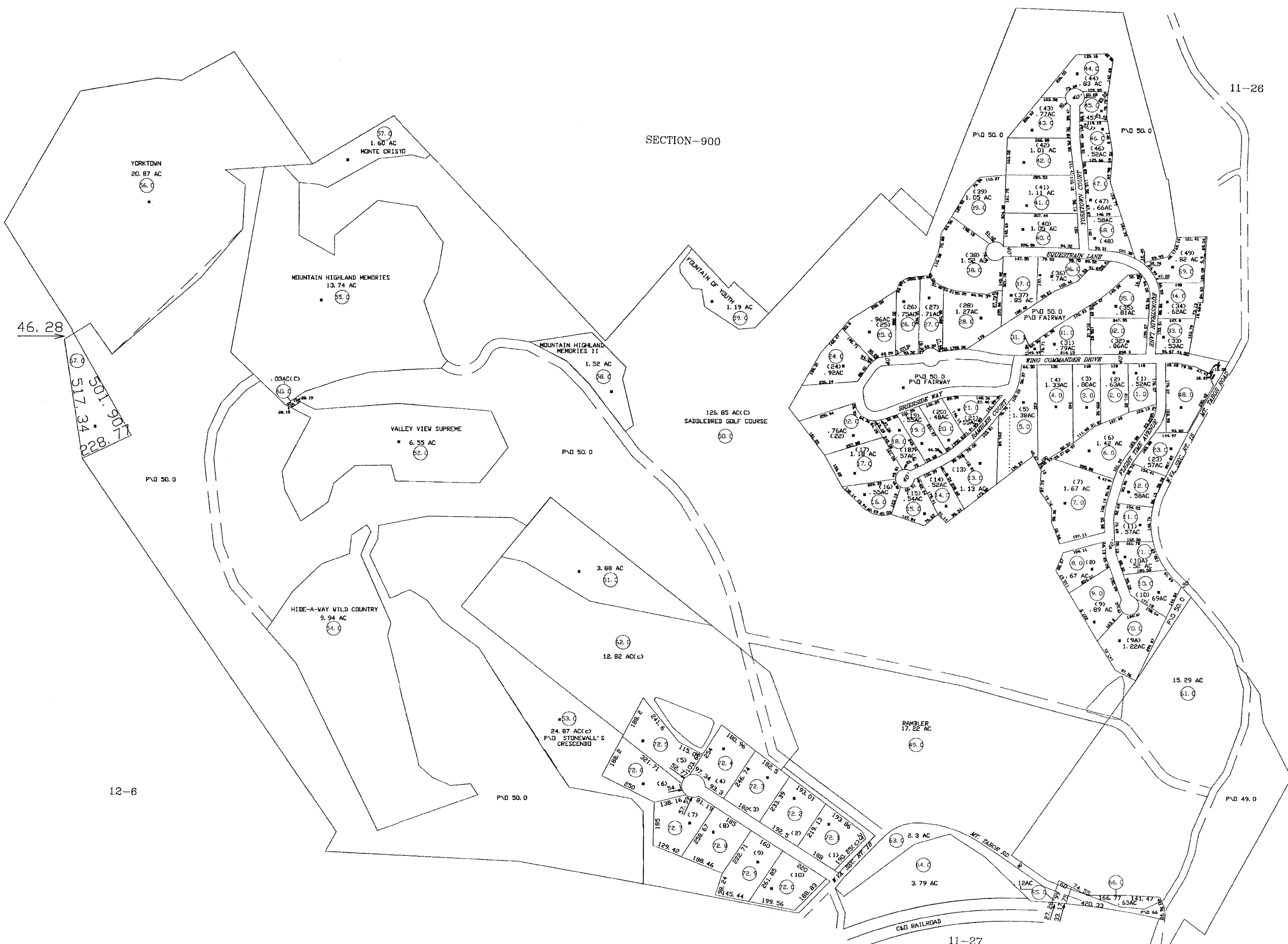




SECTION-900



For Tax Purposes Only
Prepared by
RALEIGH COUNTY ASSESSOR'S OFFICE
DREMA B. EVANS, ASSESSOR
BECKLEY, WV

LEGEND	
Property line	—————
Edge of pavement or roadway	—————
Corporation line	—————
District line	—————
County line	—————
Waterways	—————
2010 CHANGE	—————
Original lot line
Dead lot number	(15)
Parcel or index number	(5)
Improvement	o
Railroad	—————

REVISIONS	
1	03/29/02 CLG
2	06/26/03 CLG
3	10/26/06 CLG
4	3/18/09 TPB
5	
6	
7	
8	

RESTRICTION

All tax maps created under the provisions of reappraisal legislation are the property of Raleigh County West Virginia and the reproduction, copying, distribution or sale of such tax maps or any copies thereof without the written permission of the Raleigh County Assessor is prohibited by law.

KEY MAP	
+	+
+	+
+	+

COUNTY OF RALEIGH

Office of Assessor
Beckley, W. Va.

TOWN DISTRICT
District 11 Map No. 26D

Date, Aerial Photography: Photo No.
Date, Map: 10-01-97
Scale: 1"=200'