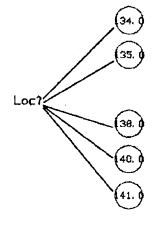
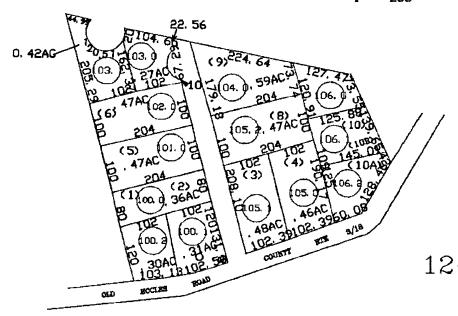
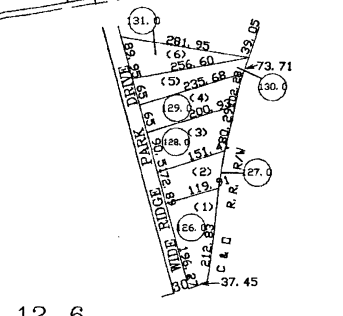
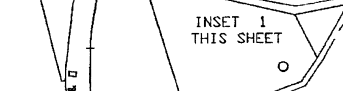
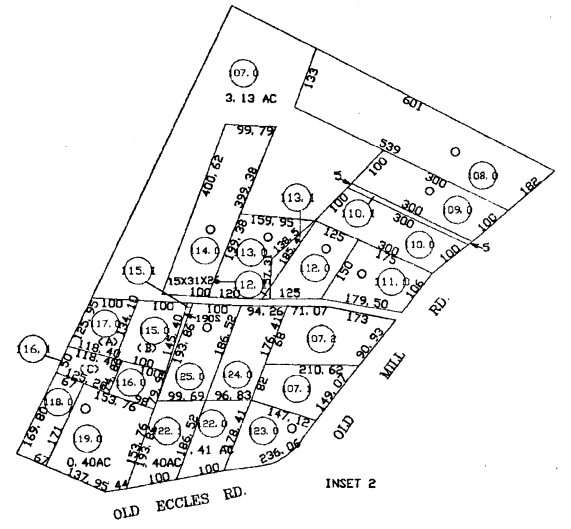
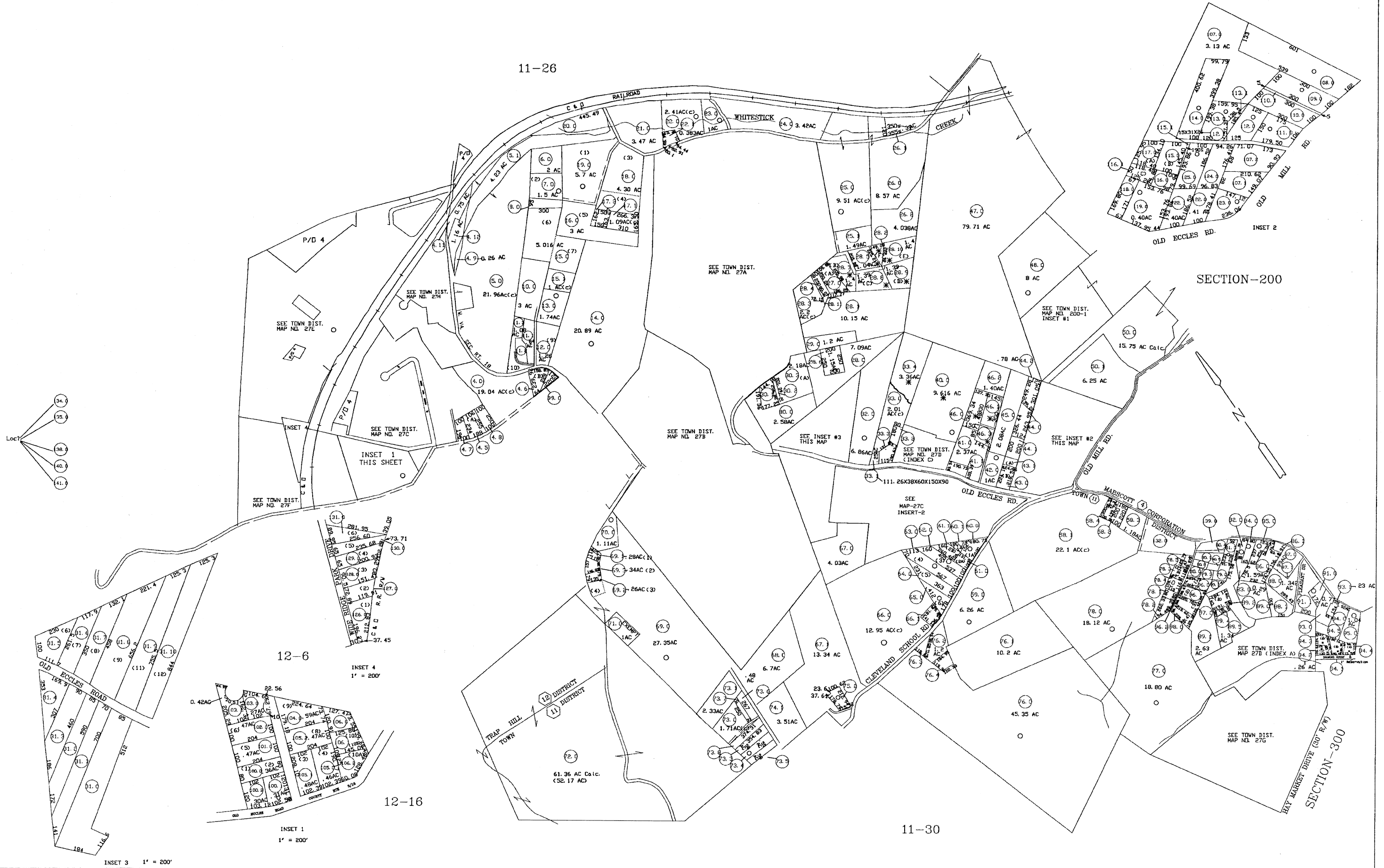


11-26



For Tax Purposes Only
 Prepared by
RALEIGH COUNTY ASSESSOR'S OFFICE
 DREMA B. EVANS, ASSESSOR
 BECKLEY, WV

LEGEND	
Property line	Original lot line
Edge of pavement or roadway	Deed lot number (15)
Corporation line	Parcel or index number (69)
District line	Improvement
County line	Railroad
Highway	
2010 CHANGE	

REVISIONS
1 07/02/03 CLG
2 12/14/05 CLG
3 07/18/06 CLG
4 03/29/07 CLG
5 08/27/07 ADL
6 01/24/08 ADL
7 04/09/08 ADL
8 05/14/08 ADL
9 07/15/09 TPB

RESTRICTION

All tax maps created under the provisions of reappraisal legislation are the property of Raleigh County West Virginia and the reproduction, copying, distribution or sale of such tax maps or any copies thereof without the written permission of the Raleigh County Assessor is prohibited by law.

KEY MAP

COUNTY OF RALEIGH
 Office of Assessor
 Beckley, W. Va.

TOWN DISTRICT
 District 11 Map No. 27

Date, Aerial Photography: _____
 Photo No: _____

Date, Map: AUG. 9, 1996
 Scale: 1"=400'