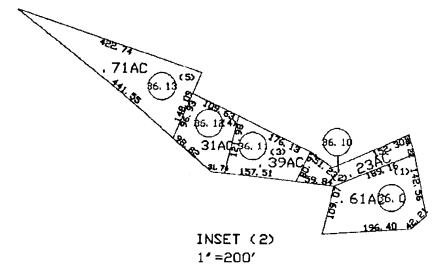
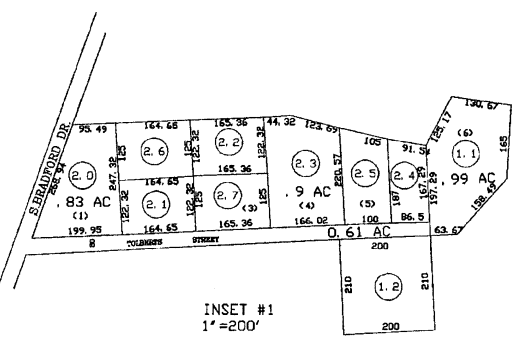


SECTION-300



For Tax Purposes Only

Prepared by
RALEIGH COUNTY ASSESSOR'S OFFICE
DREMA B. EVANS, ASSESSOR
BECKLEY, WV

LEGEND	
Property line	Original lot line
Edge of pavement or roadway	Seed lot number
Corporation line	Parcel or index number
District line	Improvement
County line	Railroad
Waterways	
2010 CHANGE	

REVISIONS	
1	07/14/99 CLG
2	11/27/01 CLG
3	12/17/02 CLG
4	07/07/03 CLG
5	11/23/04 CLG
6	12/06/05 CLG
7	10/13/06 CLG
8	04/03/07 CLG
9	06/30/09 TPB

RESTRICTION

All tax maps created under the provisions of reappraisal legislation are the property of Raleigh County West Virginia and the reproduction, copying, distribution or sale of such tax maps or any copies thereof without the written permission of the Raleigh County Assessor is prohibited by law.

KEY MAP	
+	+
+	+
+	+
+	+

COUNTY OF RALEIGH
Office of Assessor
Beckley, W. Va.

TOWN DISTRICT
District 11 Map No. 30

Date, Aerial Photography: Photo No:
Date, Map: AUG. 23, 1996
Scale: 1"=400'