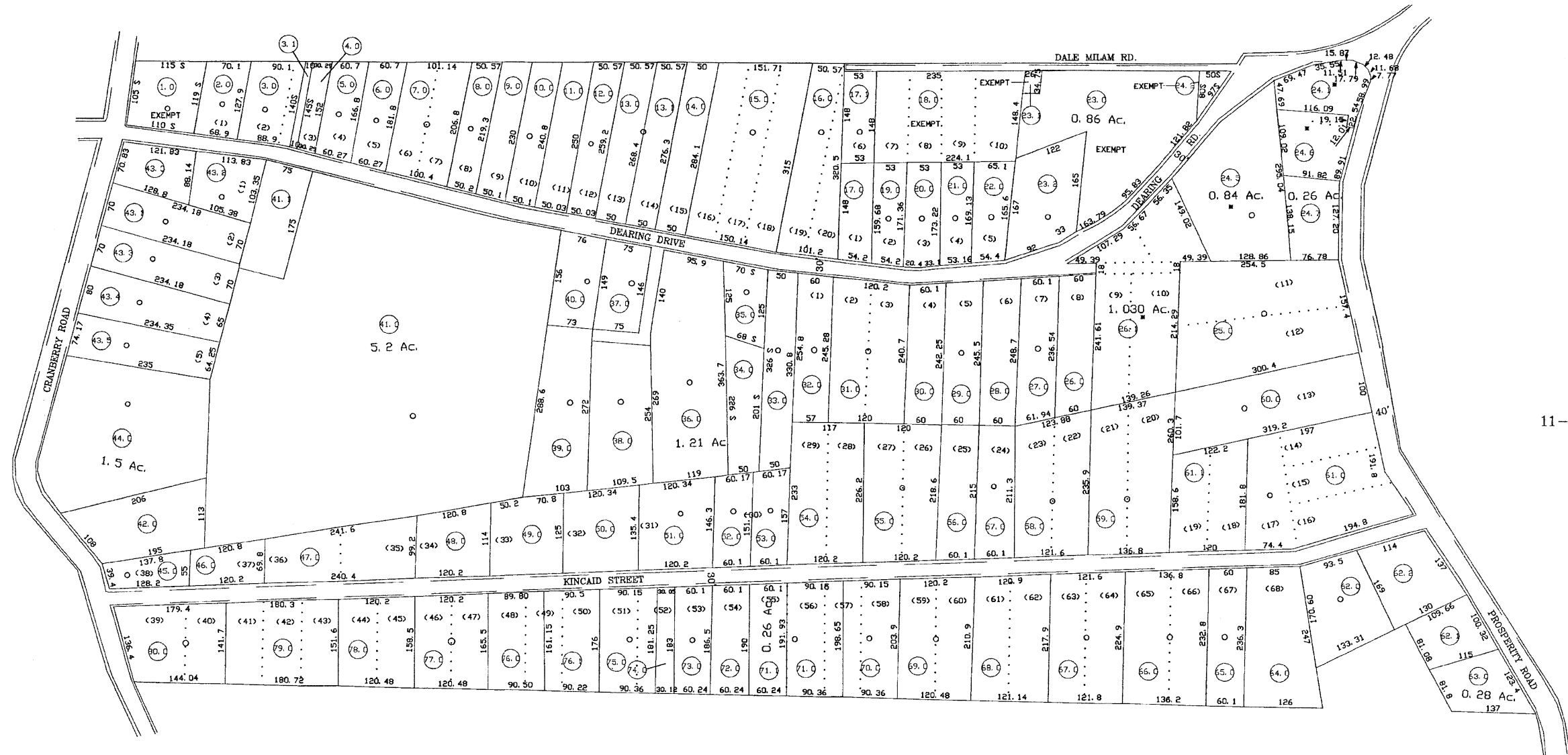
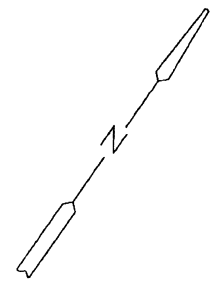


11-(700-3)



11-(700-2)

11-13

11-(700-5)

For Tax Purposes Only

Prepared by  
RALEIGH COUNTY ASSESSOR'S OFFICE  
DREMA B. EVANS, ASSESSOR  
BECKLEY, WV

LEGEND

Property line	—	Original lot line	.....
Edge of pavement or roadway	—	Seed lot number	(15)
Corporation line	---	Parcel or Index number	(99)
District line	---	Improvement	o
County line	---	Railroad	+
Waterways	---		
2010 CHANGE	---		

REVISIONS

1	04/07/97	SCR
2	01/09/98	SCR
3	06/26/00	CLG
4	10/17/06	CLG
5	07/26/07	ADL
6	10/15/07	ADL
7		
8		

RESTRICTION

All tax maps created under the provisions of reappraisal legislation are the property of Raleigh County West Virginia and the reproduction, copying, distribution or sale of such tax maps or any thereof without the written permission of the Raleigh County Assessor is prohibited by law.

KEY MAP



COUNTY OF RALEIGH

Office of Assessor  
Beckley, W. Va.

TOWN DISTRICT

District 11 Map No. 700-4

Date, Aerial Photography:  
Photo No:

Date, Map: 21 Apr 1996  
Scale: 1" = 100'