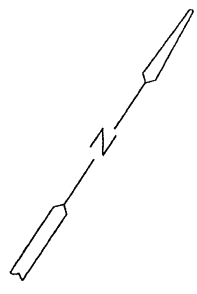


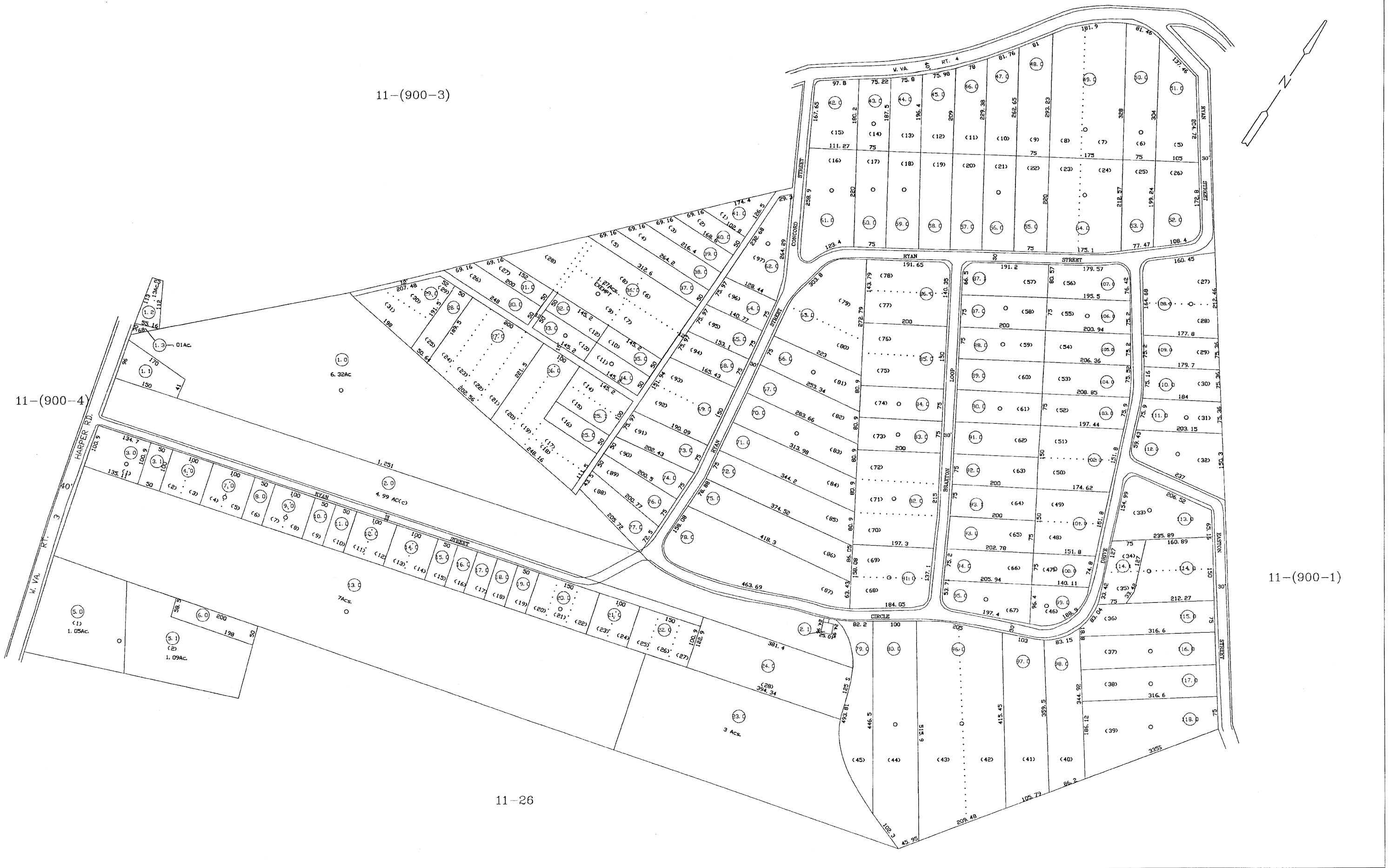
11-(900-3)



11-(900-4)

11-(900-1)

11-26



<p>For Tax Purposes Only</p> <p>Prepared by RALEIGH COUNTY ASSESSOR'S OFFICE DREMA B. EVANS, ASSESSOR BECKLEY, WV</p>		<p>LEGEND</p> <p>Property line ————</p> <p>Edge of pavement or roadway ————</p> <p>Corporation line - - - - -</p> <p>District line ————</p> <p>County line ————</p> <p>Waterways ————</p> <p>2010 CHANGE ————</p> <p>Original lot line ————</p> <p>Deed lot number (15)</p> <p>Parcel or index number (15)</p> <p>Improvement (15)</p> <p>Railroad ————</p>	<p>REVISIONS</p> <p>1 10/18/06 CLG</p> <p>2</p> <p>3</p> <p>4</p> <p>5</p> <p>6</p> <p>7</p> <p>8</p>	<p>RESTRICTION</p> <p>All tax maps created under the provisions of reappraisal legislation are the property of Raleigh County West Virginia and the reproduction, copying, distribution or sale of such tax maps or any copies thereof without the written permission of the Raleigh County Assessor is prohibited by law.</p>	<p>KEY MAP</p>	<p>COUNTY OF RALEIGH</p> <p>Office of Assessor</p> <p>Beckley, W. Va.</p>	<p>TOWN DISTRICT</p> <p>District 11 Map No. 900-2</p> <p>Date, Aerial Photography: _____</p> <p>Photo No: _____</p> <p>Date, Map: AUG. 16, 1996</p> <p>Scale: 1"=100'</p>
---	--	--	--	---	-----------------------	--	--