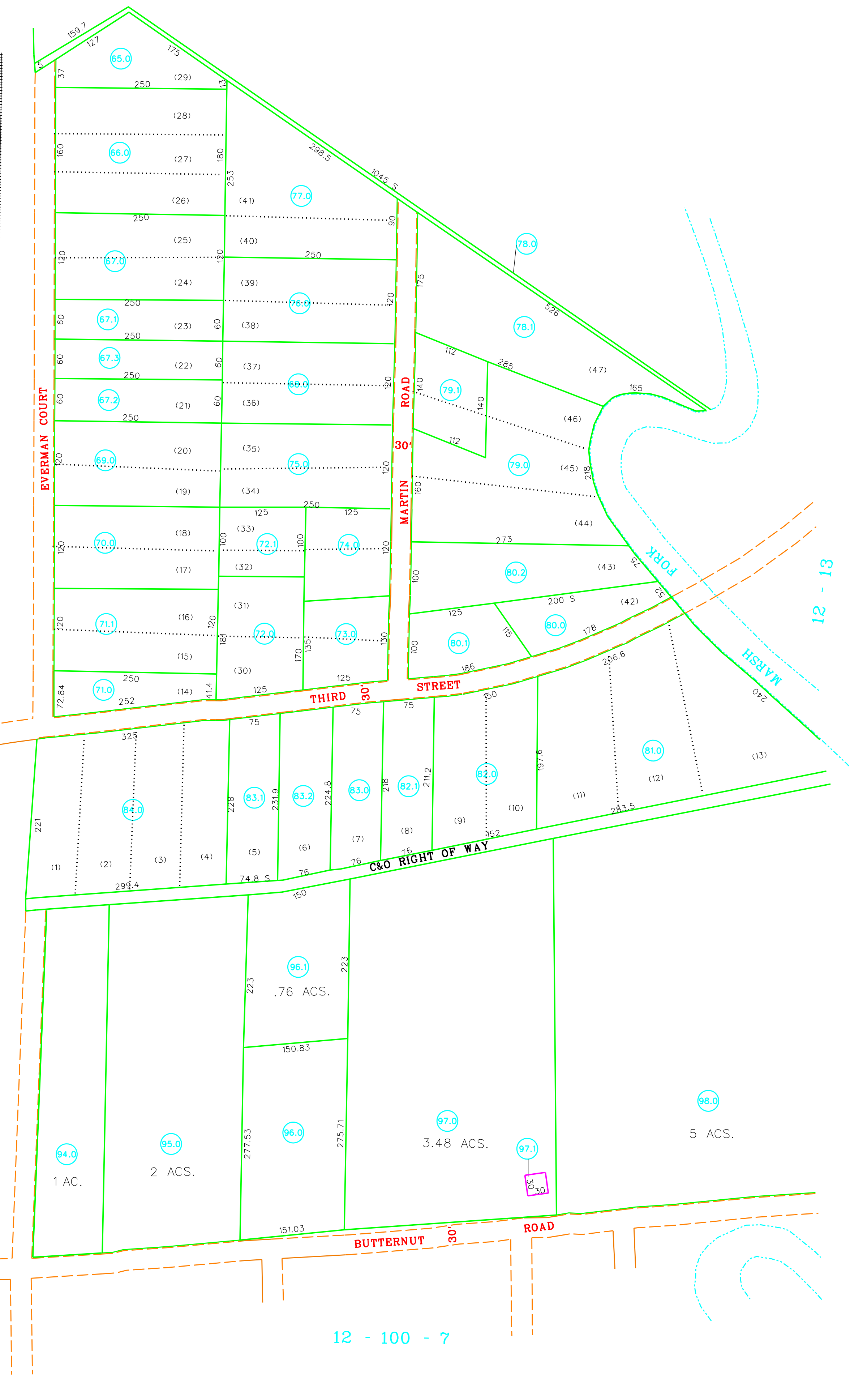
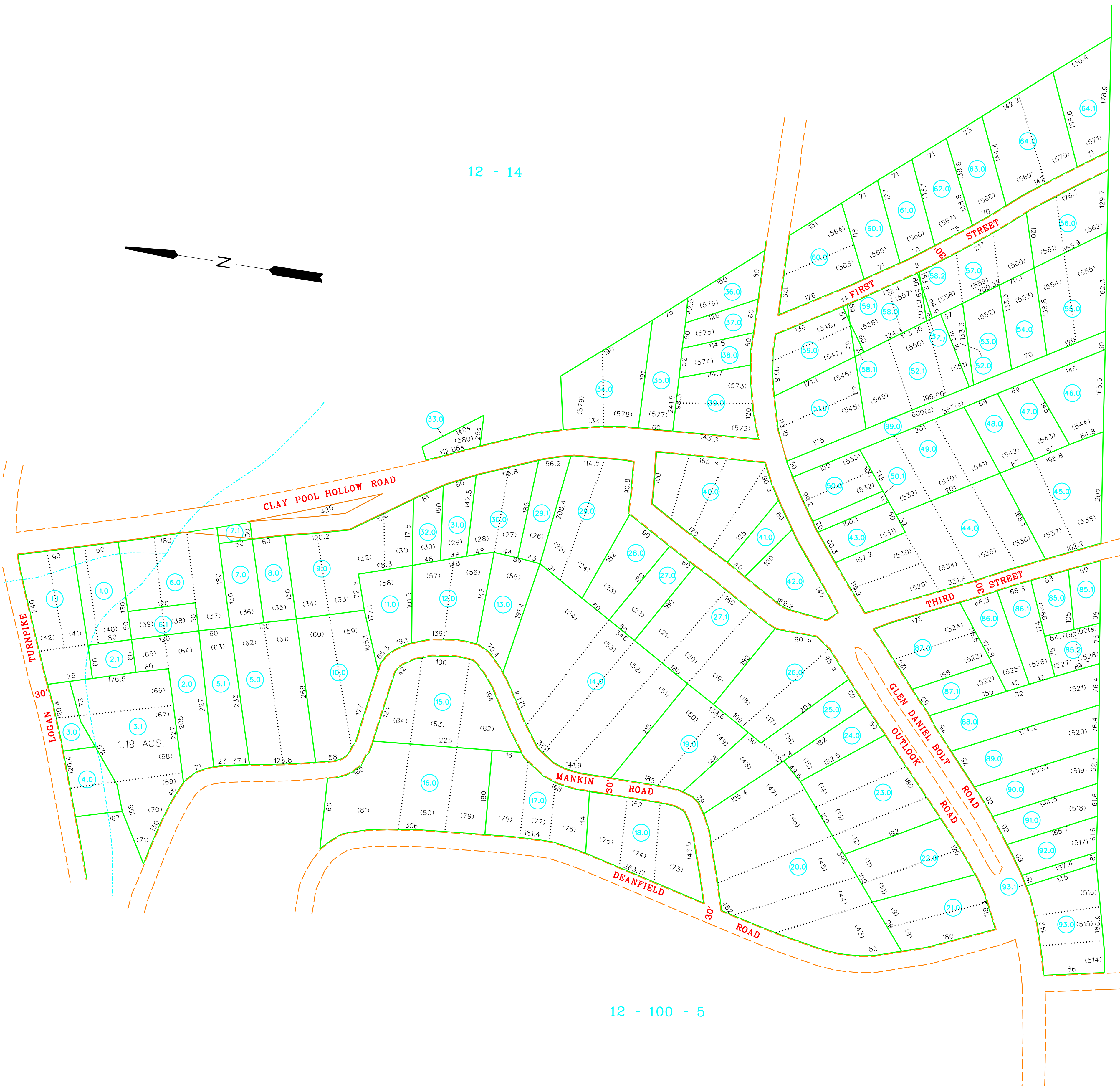


12 - 14

12 - 13

12 - 100 - 5

12 - 100 - 7



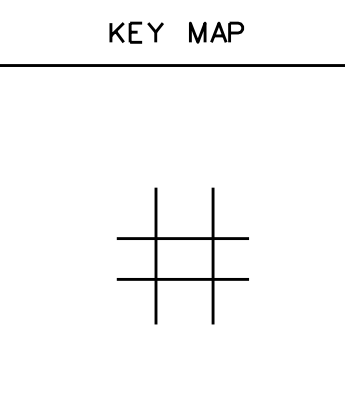
For Tax Purposes Only  
 Prepared by  
**RALEIGH COUNTY ASSESSOR'S OFFICE**  
 BECKLEY, WV

LEGEND	
Property line	—
Edge of pavement or roadway	—
Corporation line	—
District line	—
County line	—
Waterways	—
2016 CHANGE	—
Original lot line	.....
Deed lot number	(15)
Parcel or index number	99
Improvement	o
Railroad	—+—

REVISIONS	
1	05/22/01 CLG
2	10/30/03 CLG
3	07/17/09 TPB
4	05/31/11 TPB
5	03/31/15 PRB
6	06/29/15 PRB
7	10/11/16 BIE
8	

**RESTRICTION**

All tax maps created under the provisions of reappraisal legislation are the property of the State of West Virginia and the reproduction, copying, distribution or sale of such tax maps or any copies thereof without the written permission of the State Tax Commissioner is prohibited by law.



**COUNTY OF RALEIGH**  
 Office of Assessor  
 Beckley, W.Va.

TRAP HILL DISTRICT  
 District 12 Map No.100 - 6

Date, Aerial Photography: Photo No:  
 Date, Map: MAY, 1999  
 Scale: 1"=100'