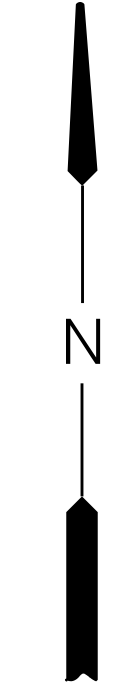
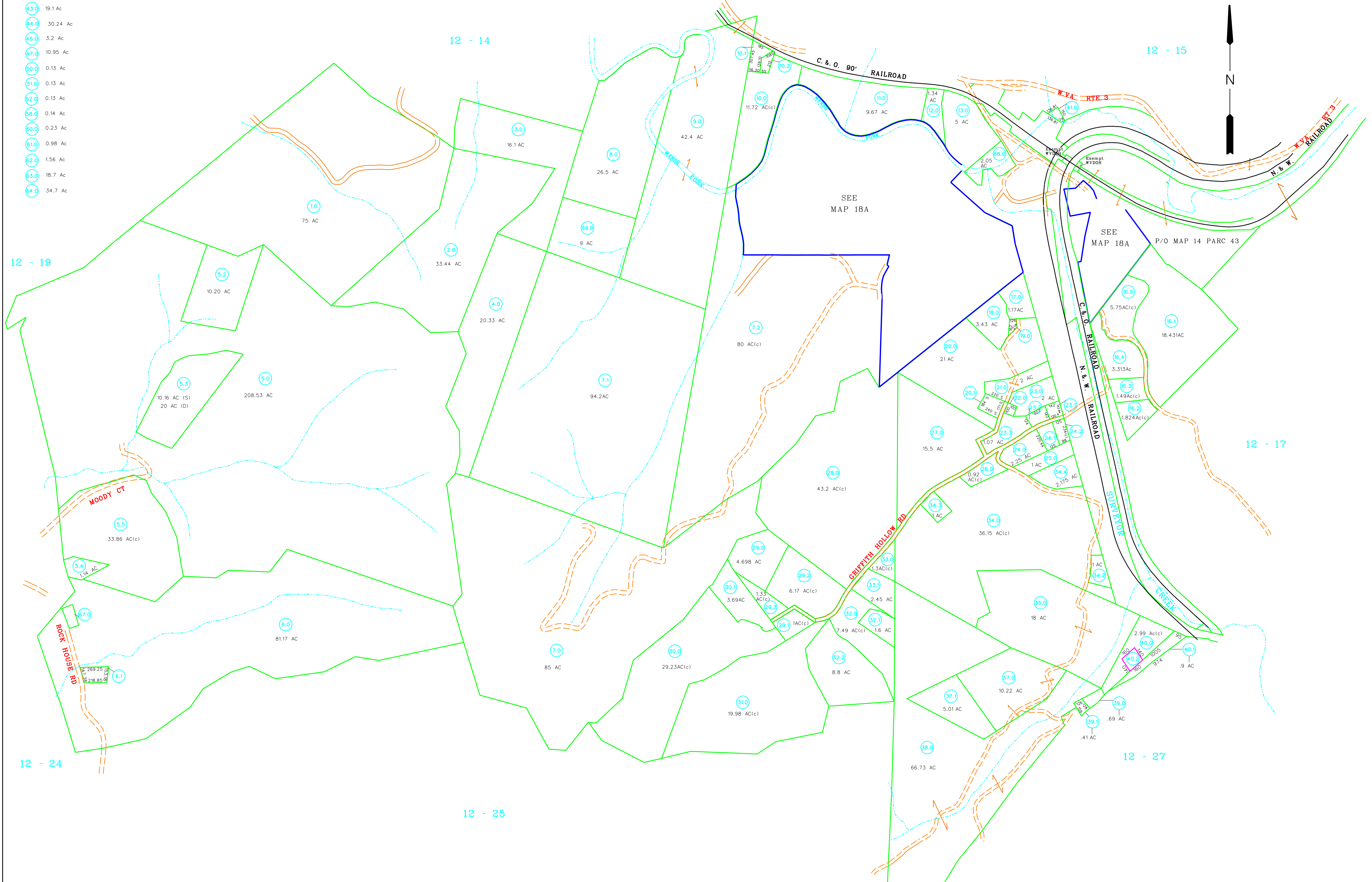


- 43.0 19.1 Ac
- 44.0 30.24 Ac
- 45.0 3.2 Ac
- 47.0 10.95 Ac
- 50.0 0.13 Ac
- 51.0 0.13 Ac
- 52.0 0.13 Ac
- 58.0 0.14 Ac
- 60.0 0.23 Ac
- 61.0 0.98 Ac
- 62.0 1.56 Ac
- 63.0 18.7 Ac
- 64.0 34.7 Ac



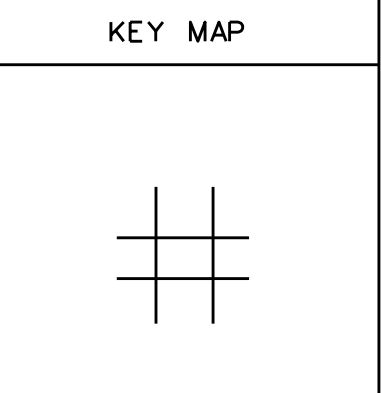
For Tax Purposes Only
 Prepared by
RALEIGH COUNTY ASSESSOR'S OFFICE
 BECKLEY, WV

LEGEND	
Property line	Original lot line
Edge of pavement or roadway	Deed lot number
Corporation line	Parcel or index number
District line	Improvement
County line	Railroad
Waterways	
2013 CHANGE	

REVISIONS	
1	12/20/06 CLG
2	10/02/07 ADL
3	01/25/08 ADL
4	05/12/08 ADL
5	04/07/09 TPB
6	04/05/11 TPB
7	07/28/11 TPB
8	10/17/12 PRB
9	10/01/13 CDB

RESTRICTION

All tax maps created under the provisions of reappraisal legislation are the property of Raleigh County West Virginia and the reproduction, copying, distribution or sale of such tax maps or any copies thereof without the written permission of the Raleigh County Assessor is prohibited by law.



COUNTY OF RALEIGH
 Office of Assessor
 Beckley, W.Va.

TRAP HILL DISTRICT
 District 12 Map No. 18

Date, Aerial Photography: Date, Map: MAY, 1999
 Photo No: Scale: 1" = 400'