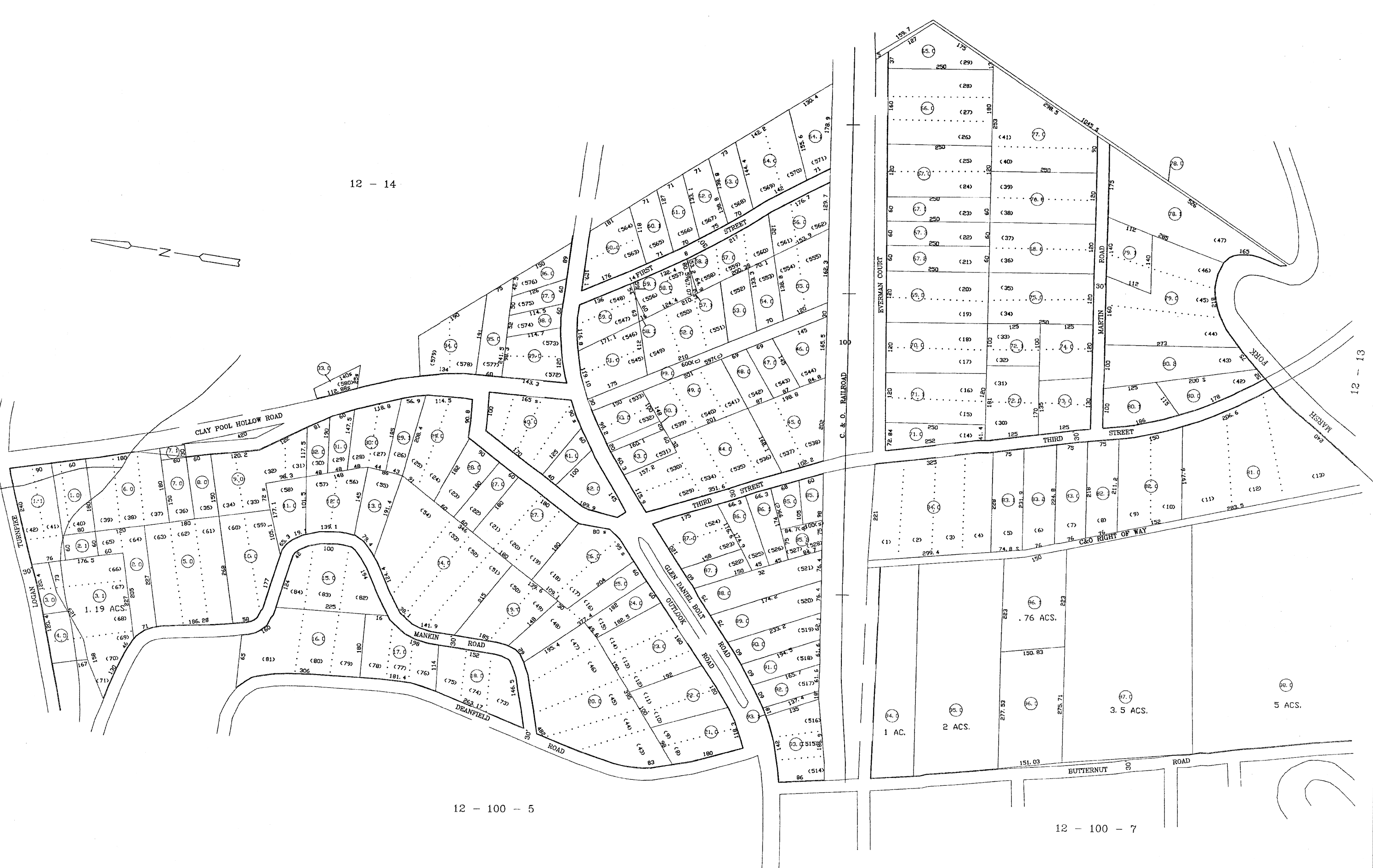
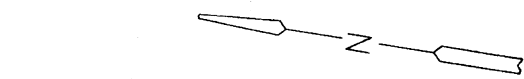


12 - 14



12 - 100 - 5

12 - 100 - 7

12 - 13

For Tax Purposes Only

Prepared by
RALEIGH COUNTY ASSESSOR'S OFFICE
DREMA B. EVANS, ASSESSOR
BECKLEY, WV

LEGEND

Property line	Original lot line
Edge of pavement or roadway	Deed lot number (15)
Corporation line	Parcel or index number (20)
District line	Improvement
County line	Railroad
Waterways	
2010 CHANGE	

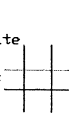
REVISIONS

1	05/22/01	CLG
2	10/30/03	CLG
3	07/17/09	TPB
4		
5		
6		
7		
8		

RESTRICTION

All tax maps created under the provisions of the State reappraisal legislation are the property of the State of West Virginia and the reproduction, copying, distribution or sale of such tax maps or any copies thereof without the written permission of the State Tax Commissioner is prohibited by law.

KEY MAP



COUNTY OF RALEIGH

Office of Assessor
Beckley, W. Va.

TRAP HILL DISTRICT

District 12 Map No. 100 - 6

Date, Aerial Photography
Photo No:

Date, Map: MAY, 1999
Scale: 1"=100'