

12-13C

12-13F

12-13B

12-13

12-13C

12-13E

12-13D

12-14

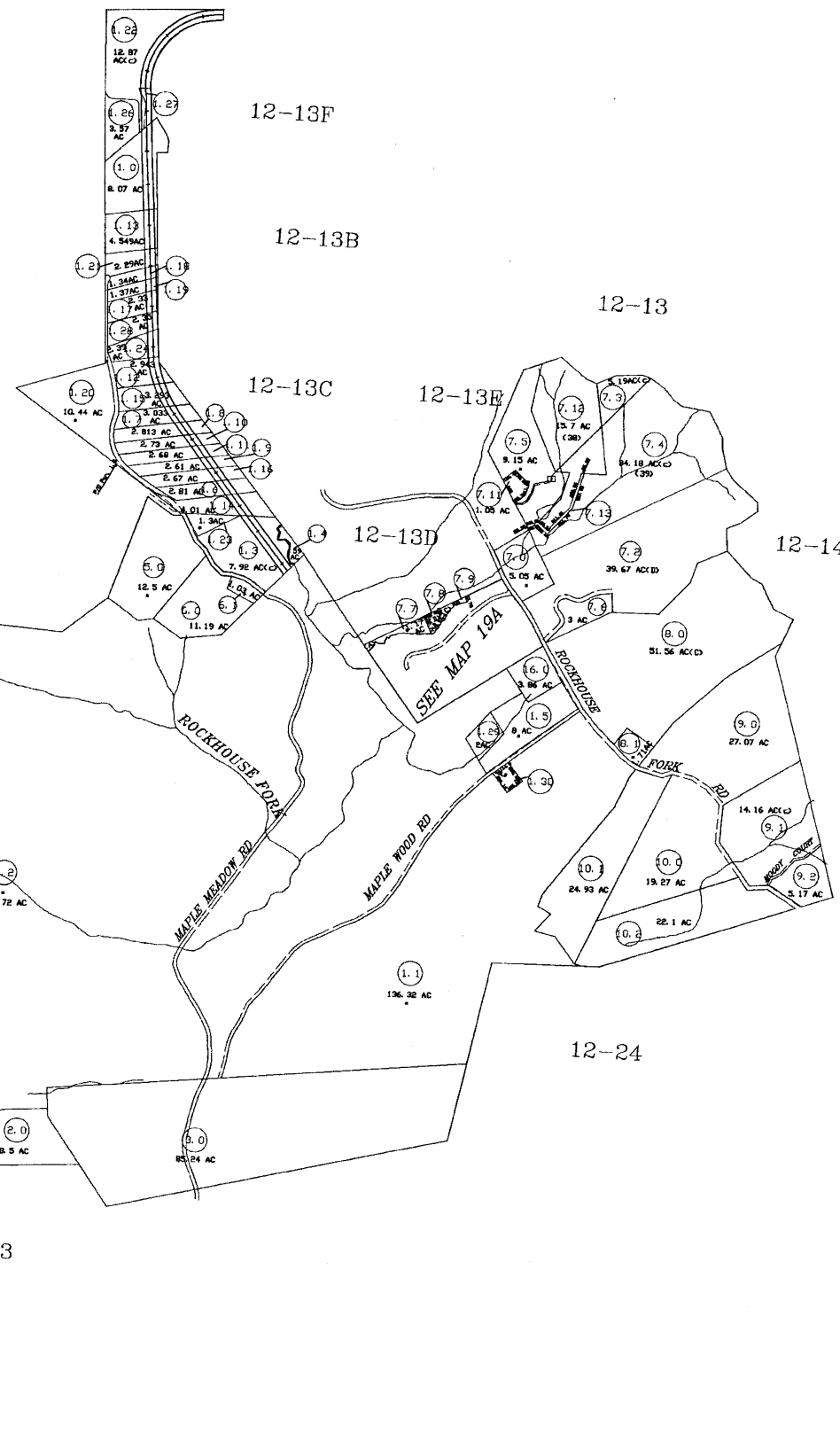
12-12

12-18

12-22

12-24

12-23



For Tax Purposes Only

Prepared by
RALEIGH COUNTY ASSESSOR'S OFFICE
DREMA B. EVANS, ASSESSOR
BECKLEY, WV

LEGEND

Property line	_____	Original lot line	_____
Edge of pavement or roadway	-----	Deed lot number	(15)
Corporation line	-----	Parcel or index number	(19)
District line	-----	Improvement	o
County line	-----	Railroad	—+—+—+—
Waterways	~~~~~		
2010 CHANGE	_____		

REVISIONS

1	10/13/00	CLG
2	08/02/01	CLG
3	12/27/02	CLG
4	09/28/04	CLG
5	12/14/05	CLG
6	10/23/06	CLG
7	12/20/06	CLG
8	09/28/07	ADL
9	05/21/08	ADL

RESTRICTION

All tax maps created under the provisions of reappraisal legislation are the property of Raleigh County West Virginia and the reproduction, copying, distribution or sale of such tax maps or any copies thereof without the written permission of the Raleigh County Assessor is prohibited by law.

KEY MAP



COUNTY OF RALEIGH
Office of Assessor
Beckley, W. Va.

TRAP HILL DISTRICT
District 12 Map No. 19

Date, Aerial Photography: _____ Date, Map: OCTOBER 08, 1998
Photo No: _____ Scale: 1" = 800'