

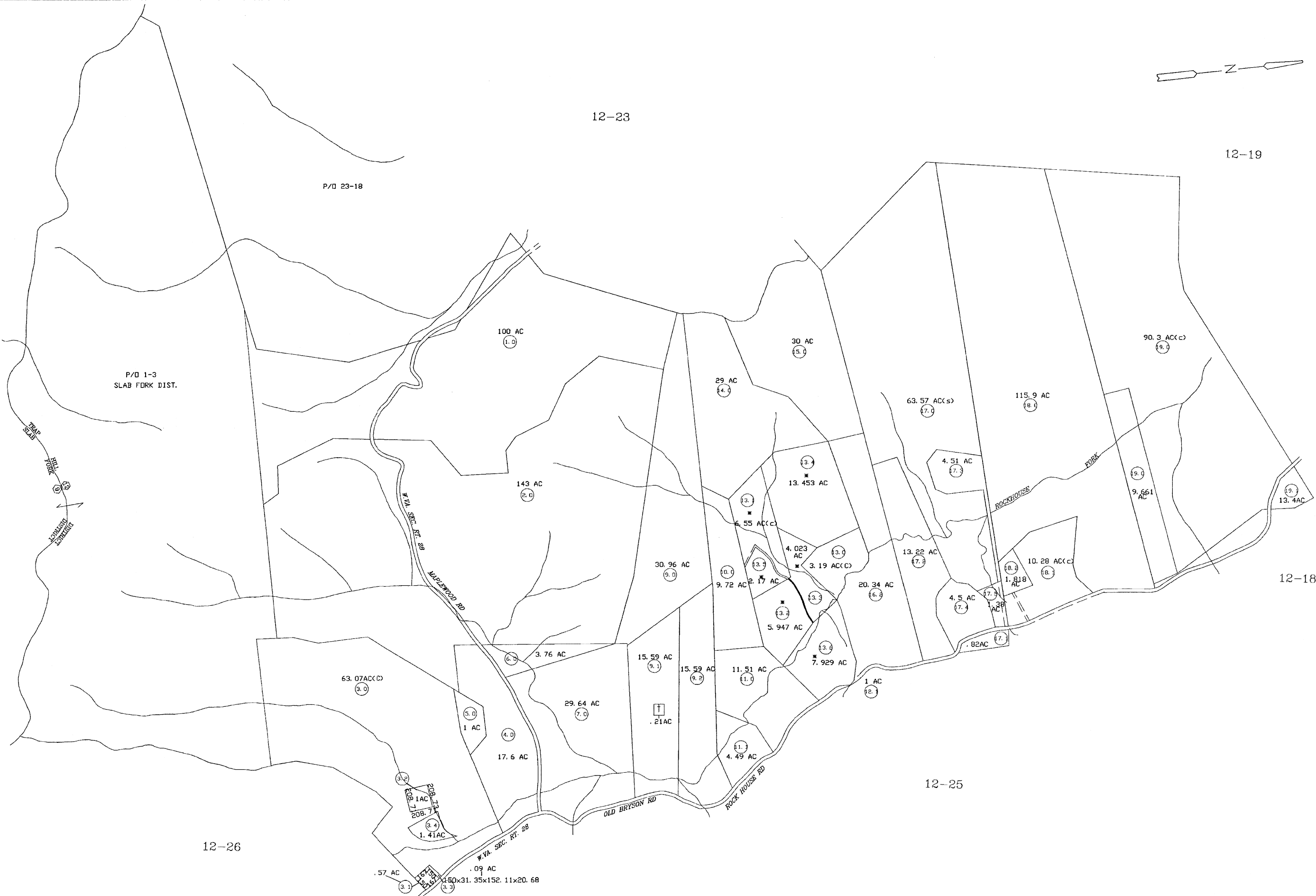
12-23

12-19

P/D 23-18

P/D 1-3
SLAB FORK DIST.

9-1



12-18

12-25

12-26

For Tax Purposes Only

Prepared by
RALEIGH COUNTY ASSESSOR'S OFFICE
DREMA B. EVANS, ASSESSOR
BECKLEY, WV

LEGEND

Property line	—
Edge of pavement or roadway	—
Corporation line	—
District line	—
County line	—
Waterways	—
2010 CHANGE	—

Original lot line	—
Deed lot number	(15)
Parcel or index number	99
Improvement	o
Railroad	—

REVISIONS

1	10-16-97 SCR
2	10/13/98 SCR
3	10/12/99 CLG
4	11/18/03 CLG
5	02/20/04 CLG
6	12/26/06 CLG
7	03/04/09 TPB
8	

RESTRICTION

All tax maps created under the provisions of reappraisal legislation are the property of Raleigh County West Virginia and the reproduction, copying, distribution or sale of such tax maps or any copies thereof without the written permission of the Raleigh County Assessor is prohibited by law.

KEY MAP



COUNTY OF RALEIGH

Office of Assessor
Beckley, W. Va.

TRAP HILL DISTRICT
District 12 Map No. 24

Date, Aerial Photography:
Photo No:

Date, Map: 05-19-97
Scale: 1"=400'