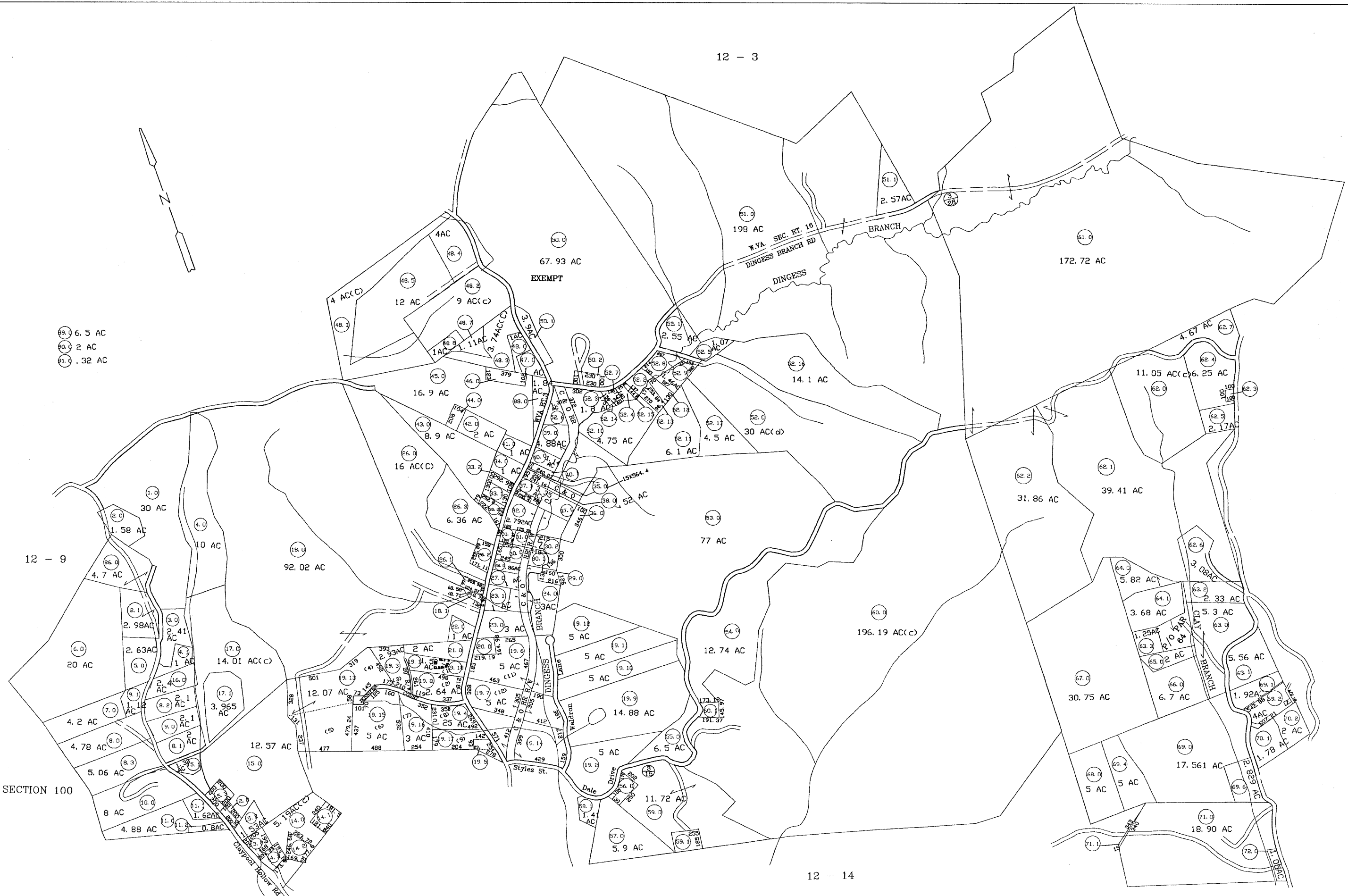


- 59.0 6.5 AC
- 60.0 2 AC
- 61.0 .32 AC



For Tax Purposes Only

Prepared by  
**RALEIGH COUNTY ASSESSOR'S OFFICE**  
**DREMA B. EVANS, ASSESSOR**  
**BECKLEY, WV**

LEGEND	
Property line	Original lot line
Edge of pavement or roadway	Deed lot number (15)
Corporation line	Parcel or index number
District line	Improvement
County line	Railroad
Waterways	
2010 CHANGE	

REVISIONS	
1	12/13/00 CLG
2	08/07/01 CLG
3	08/20/02 CLG
4	10/10/03 CLG
5	01/15/04 CLG
6	02/10/06 CLG
7	01/29/07 ADL
8	05/05/09 TPB

**RESTRICTION**

All tax maps created under the provisions of reappraisal legislation are the property of Raleigh County West Virginia and the reproduction, copying distribution or sale of such tax maps or any thereof without the written permission of the Raleigh County Assessor is prohibited by law.

KEY MAP	
+	+
+	+
+	+

**COUNTY OF RALEIGH**  
 Office of Assessor  
 Beckley, W. Va.

**TRAP HILL DISTRICT**  
 District 12 Map No. 8

Date, Aerial Photography: Photo No.  
 Date, Map: AUGUST 25, 1999  
 Scale: 1" = 400'