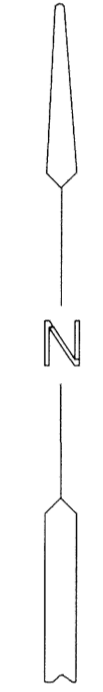
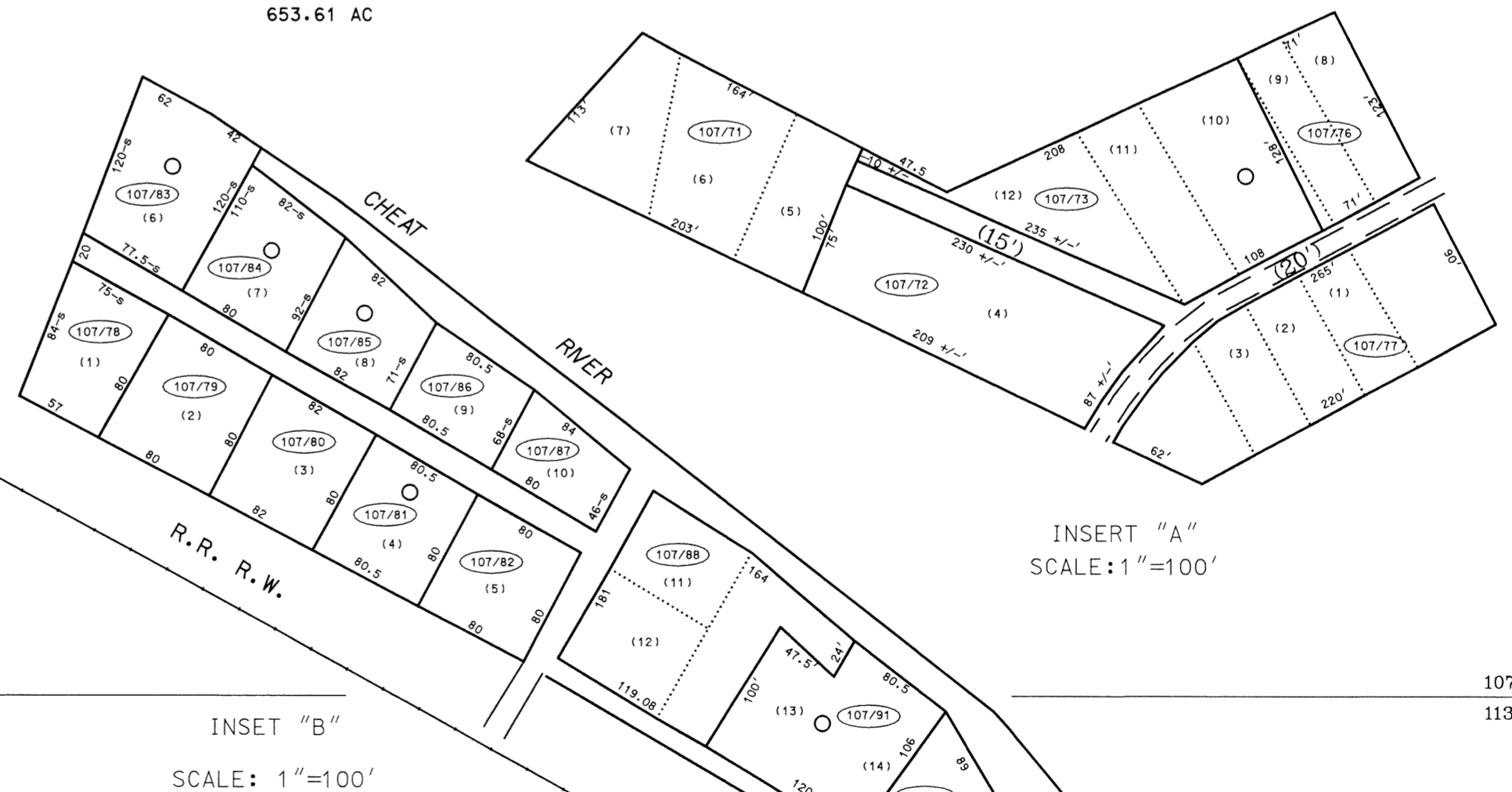


- 107/1 (260' x 130' 260' x 220' +/-)
- 107/2 (130' x 162' x 160' +/- x 130')
- 107/3 (132' x 186' x 132' x 162')
- 107/4 (185' x 186')
- 107/5 (200' x 215' x 105' x 186')
- 107/6 .90 AC
- 107/8 (168.97' x 84.63' x 113.88' x 52.98' x 134.05')
- 107/20 1 ACRE
- 107/31 (132' x 165' x 82.5' x 115' x 330')
- 107/34 (133' x 77' x 71' x 79')
- 107/36 (35' x 79' x 71' x 140' x 118' x 190')
- 107/37 (115' x 181.5' x 132' x 148.5')
- 107/38 (150' x 64')
- 107/39 0.5 ACRE
- 107/40 (137' x 97' x 142' x 87')
- 107/41 (496.75' x 66.4' x 482.6' x 70.5')
- 107/42 (10' x 90')
- 107/43 0.75 ACRE
- 107/44 (118' x 30' x 280.5' x 231')
- 107/51 1.01 AC
- 107/52 (62' x 39' x 54' x 49')
- 107/53 (15' x 100')
- 107/54 2.06 AC
- 107/55 (150' x 165' x 50' x 160')
- 107/56 (20.75' x 54.5' x 82.5' x 181.5' x 54.25' x 132')
- 107/57 .58 AC
- 107/58 (150' x 68' x 47' x 80')
- 107/59 1.1 AC
- 107/60 1 ACRE
- 107/61 (120' x 127' x 20.75' x 132')
- 107/62 .50 AC



For Tax Purposes Only  
 Prepared by  
 McKenzie Engineering Corporation  
 806 Broad Street  
 Summersville, WV 26651

LEGEND	
Property line	Original lot line
Edge of pavement or roadway	Deed lot number (15)
Corporation line	Parcel or index number (99)
District line	Improvement (o)
County line	Railroad

REVISIONS
1
2
3
4
5
6
7
8

RESTRICTION

All tax maps created under the provisions of reappraisal legislation are the property of Randolph County West Virginia and the reproduction, copying, distribution or sale of such tax maps or any copies thereof without the written permission of the Randolph County Assessor is prohibited by law.

KEY MAP
101
106 107 108
113

RANDOLPH COUNTY  
 STATE OF WEST VIRGINIA  
 Office of Assessor

BEVERLY  
 SHEET NO: 107  
 Date, Aerial Photography: April, 1963  
 Photo No: 385-7-17  
 Date, Map: June, 1963  
 Scale: 1" = 400'