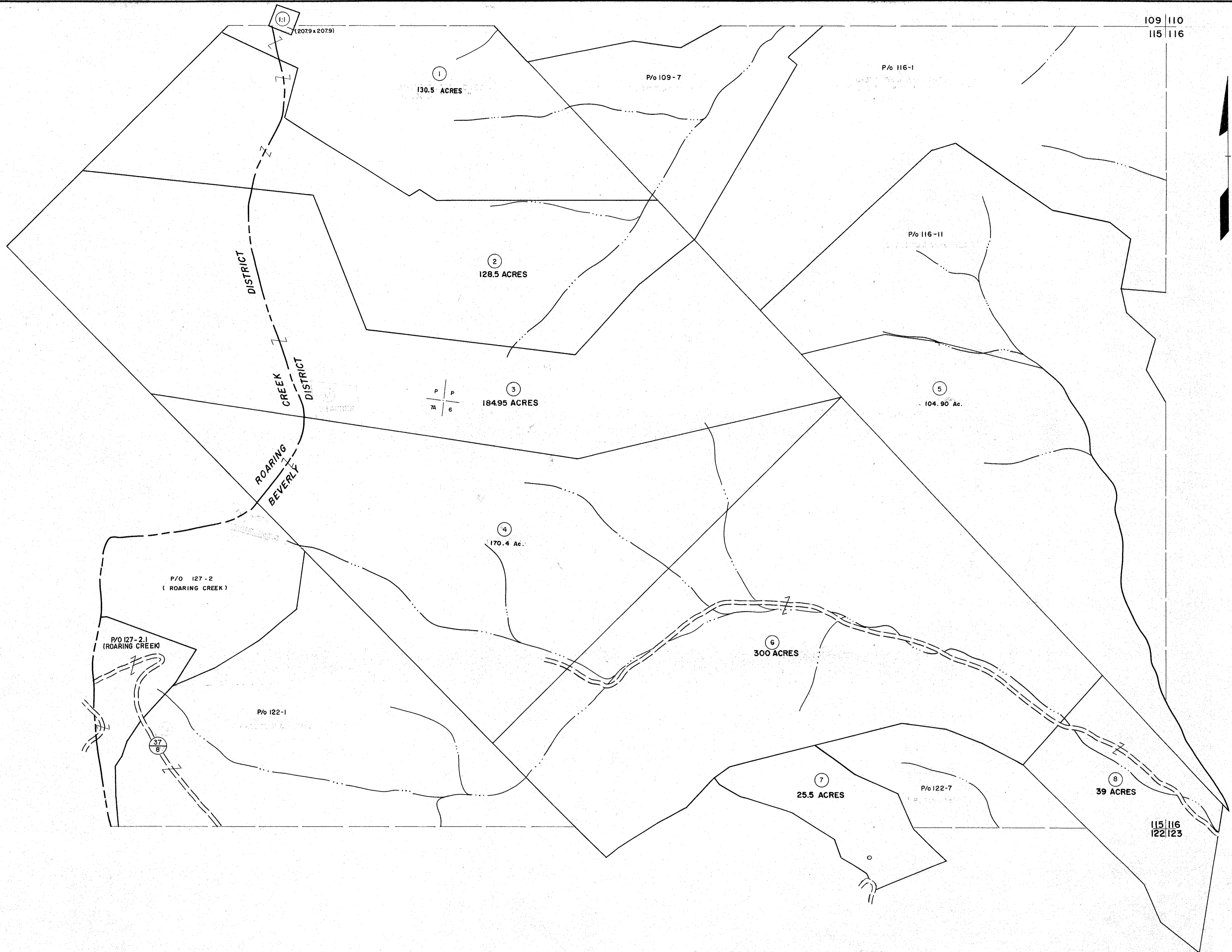


109  
115

109 110  
115 116



115  
122

For Tax Purposes Only

Prepared by  
MICHAEL BAKER, JR., INC.  
Consulting Engineers  
Rochester, Pennsylvania

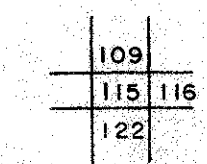
Legend

|                             |   |                        |        |
|-----------------------------|---|------------------------|--------|
| Property line               | — | Original lot line      | — (15) |
| Edge of pavement or roadway | — | Deed lot number        | ○ (99) |
| Corporation line            | — | Parcel or index number | ○      |
| District line               | — | Improvement            | —      |
| County line                 | — | Railroad               | —      |

Revisions

|   |                   |    |         |                |        |    |
|---|-------------------|----|---------|----------------|--------|----|
| 1 | 6-30-64           | 9  | O.G.I.S | 5-1-96         | J.E.B  | 17 |
| 2 | REV TO 7-1-68     | 10 | REB     | SLS INC.-J.W.M | 3/97   | 18 |
| 3 | Revised to 7-1-69 | 11 |         |                |        | 19 |
| 4 | O.G.I.S           | 12 | 4-30-92 | TL             | 3/4/91 | 20 |
| 5 | O.G.I.S           | 13 | 5-6-93  | TL             |        | 21 |
| 6 | O.G.I.S           | 14 |         |                |        | 22 |
| 7 | O.G.I.S.          | 15 | 3-15-94 | J.E.B          |        | 23 |
| 8 | O.G.I.S.          | 16 | 4-20-95 | J.E.B          |        | 24 |

KEY MAP



RANDOLPH COUNTY  
STATE OF WEST VIRGINIA  
Office of Assessor

DISTRICT  
BEVERLY

SHEET NO: 115

Date, Aerial Photography: April, 1963  
Photo No: 385-7A-6  
Date, Map: June, 1963  
Scale: 1" = 400'