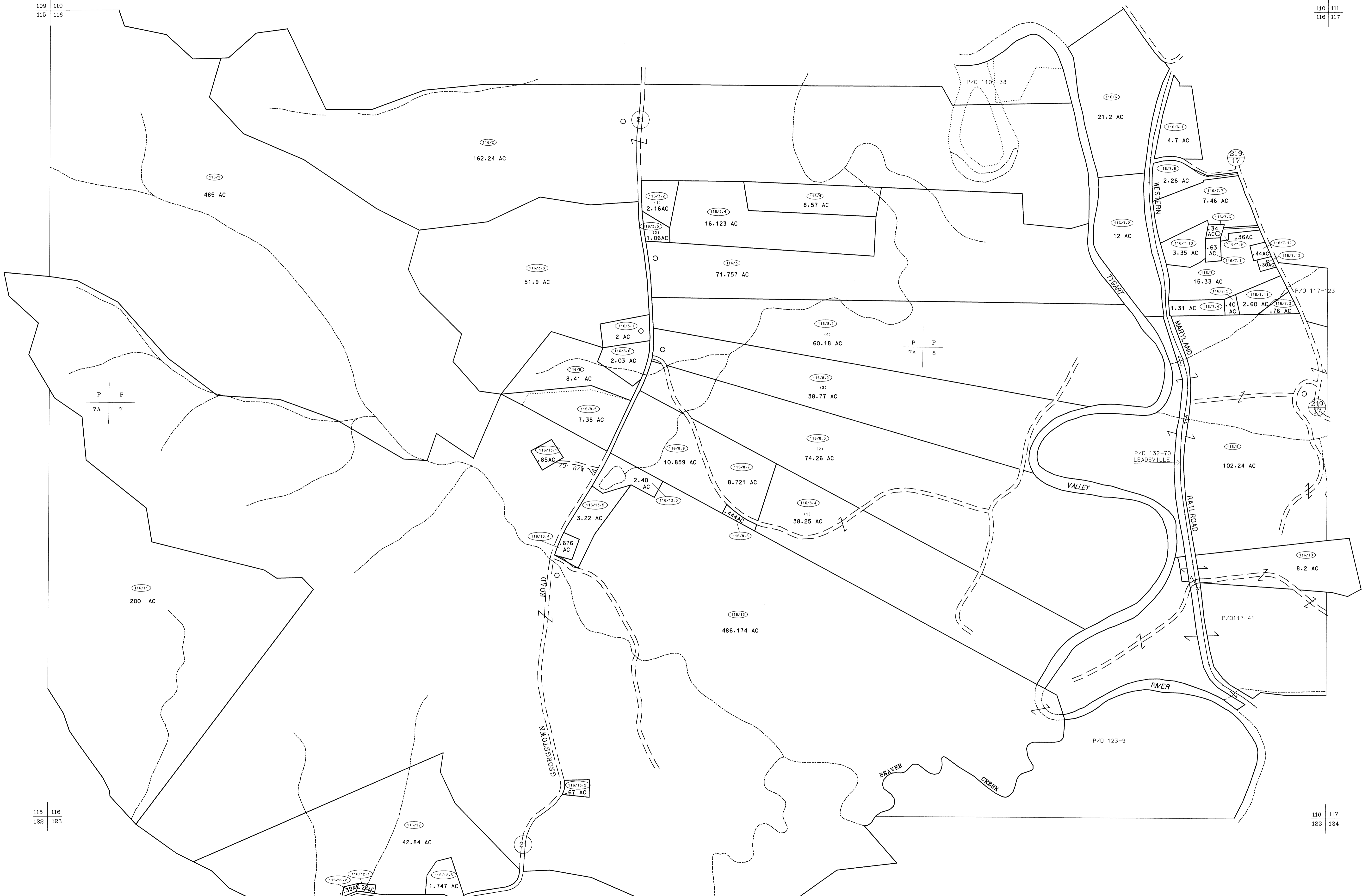
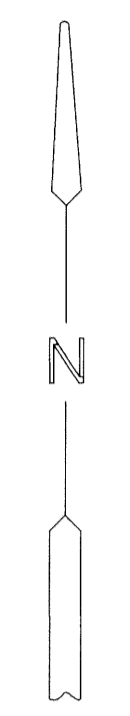


109 110
115 116

110 111
116 117

115 116
122 123

116 117
123 124



For Tax Purposes Only
Prepared by
McKenzie Engineering Corporation
806 Broad Street
Summersville, WV 26651

LEGEND	
Property line	—
Edge of pavement or roadway	---
Corporation line	----
District line	-----
County line	-----

Original lot line	---
Deed lot number	(15)
Parcelor index number	⊙
Improvement	○
Railroad	—+—

REVISIONS	
1	
2	
3	
4	
5	
6	
7	
8	

RESTRICTION
All tax maps created under the provisions of reappraisal legislation are the property of Randolph County West Virginia and the reproduction, copying, distribution or sale of such tax maps or any copies thereof without the written permission of the Randolph County Assessor is prohibited by law.

KEY MAP	
110	+
115 116 117	
123	+

RANDOLPH COUNTY
STATE OF WEST VIRGINIA
Office of Assessor

DISTRICT
BEVERLY
SHEET NO: 116
Date, Aerial Photography: April, 1963
Photo No: 385-7A-8
Date, Map: June, 1963
Scale: 1" = 400'