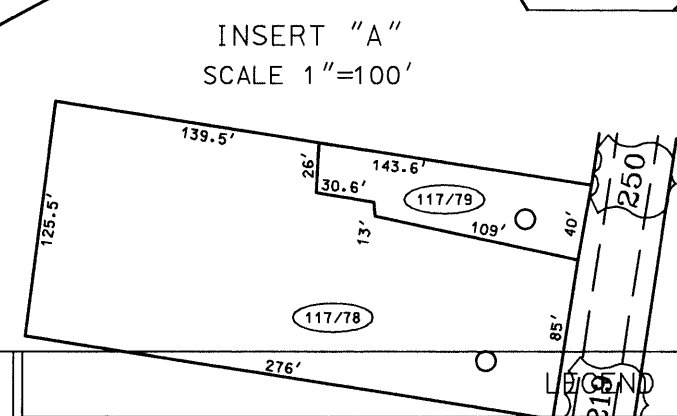




- 117/2 1.1 AC
- 117/5 1.02 AC
- 117/8 1 AC
- 117/9 1.03(30')
- 117/13 1 AC
- 117/26 1 AC
- 117/27 1 AC
- 117/28 1 AC
- 117/29 1 AC
- 117/30 1 AC
- 117/36 1.50(150')
- 117/37 1.50(185'x185'x185')
- 117/38 1.5 AC
- 117/39 1.77(88'x299'x19.8'x10'x50.82'x349')
- 117/42 1.66(248')
- 117/43 1.70(255'x80'x255')
- 117/44 1 AC
- 117/45 1.09(138')
- 117/47 1.46 AC
- 117/48 1.12(114'x100'x206')
- 117/50 1 AC
- 117/51 1.75 AC
- 117/52 1.75(193'x80'x169')
- 117/53 1.75(161'x80'x165')
- 117/54 1.15(217.5'x160'x300')
- 117/55 1.29 AC
- 117/56 1.29 AC



For Tax Purposes Only

Prepared by
McKenzie Engineering Corporation
806 Broad Street
Summersville, WV 26651

Property line	---	Original line	---
Edge of pavement or roadway	---	Dead lot number	(15)
Corporation line	---	Parcel or index number	(99)
District line	---	Improvement	o
County line	---	Railroad	---

REVISIONS	
1	
2	
3	
4	
5	
6	
7	
8	

RESTRICTION

All tax maps created under the provisions of reappraisal legislation are the property of Randolph County West Virginia and the reproduction, copying, distribution or sale of such tax maps or any copies thereof without the written permission of the Randolph County Assessor is prohibited by law.

KEY MAP	
111	
116 117 118	
124	

RANDOLPH COUNTY
STATE OF WEST VIRGINIA
Office of Assessor

DISTRICT
BEVERLY
SHEET NO: 117
Date, Aerial Photography: April, 1963
Photo No: 385-7A-9
Date, Map: June, 1963
Scale: 1" = 400'