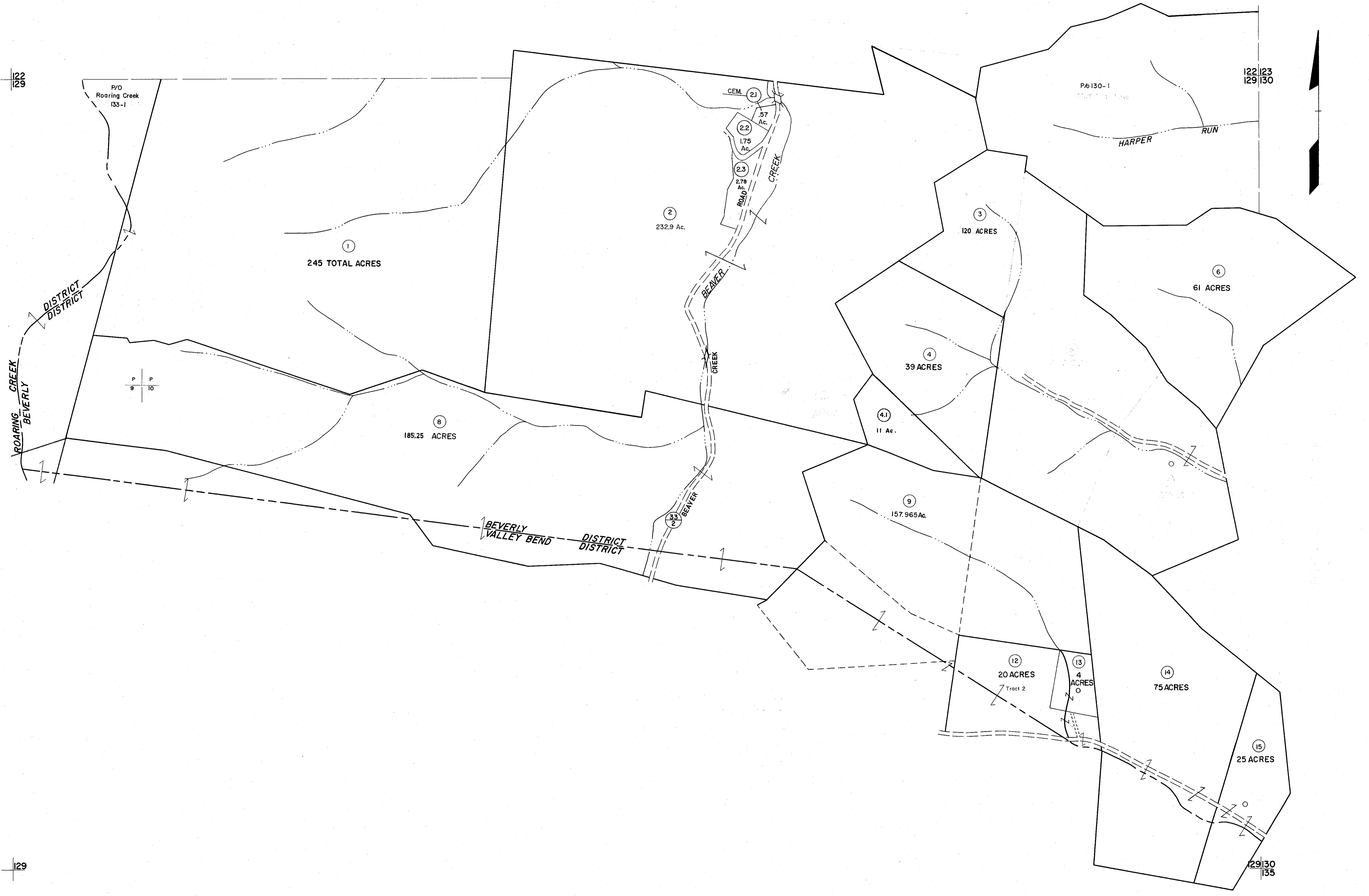


122
129

129
130

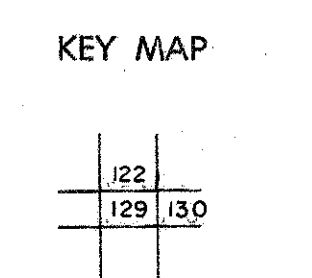


For Tax Purposes Only

Prepared by
MICHAEL BAKER, JR., INC.
Consulting Engineers
Rochester, Pennsylvania

Legend	
Property line	Original lot line
Edge of pavement or roadway	Deed lot number (15)
Corporation line	Parcel or index number (99)
District line	Improvement (O)
County line	Railroad

Revisions		
1	6-30-64	9
2	To 7-1-84 C.P.	10
3	July, 1986 TRL	11
4	REV. TO 7-1-88 REB	12
5	OGIS 4-30-92 TL	13
6	O.G.I.S 4-20-95 J.E.B	14
7	SLS INC.-J.W.M. 3/97	15
8		16



RANDOLPH COUNTY
STATE OF WEST VIRGINIA
Office of Assessor

DISTRICT	BEVERLY
SHEET NO: 129	
Date, Aerial Photography: April, 1963	Date, Map: June, 1963
Photo No: 385-9-10 & 12	Scale: 1" = 400'