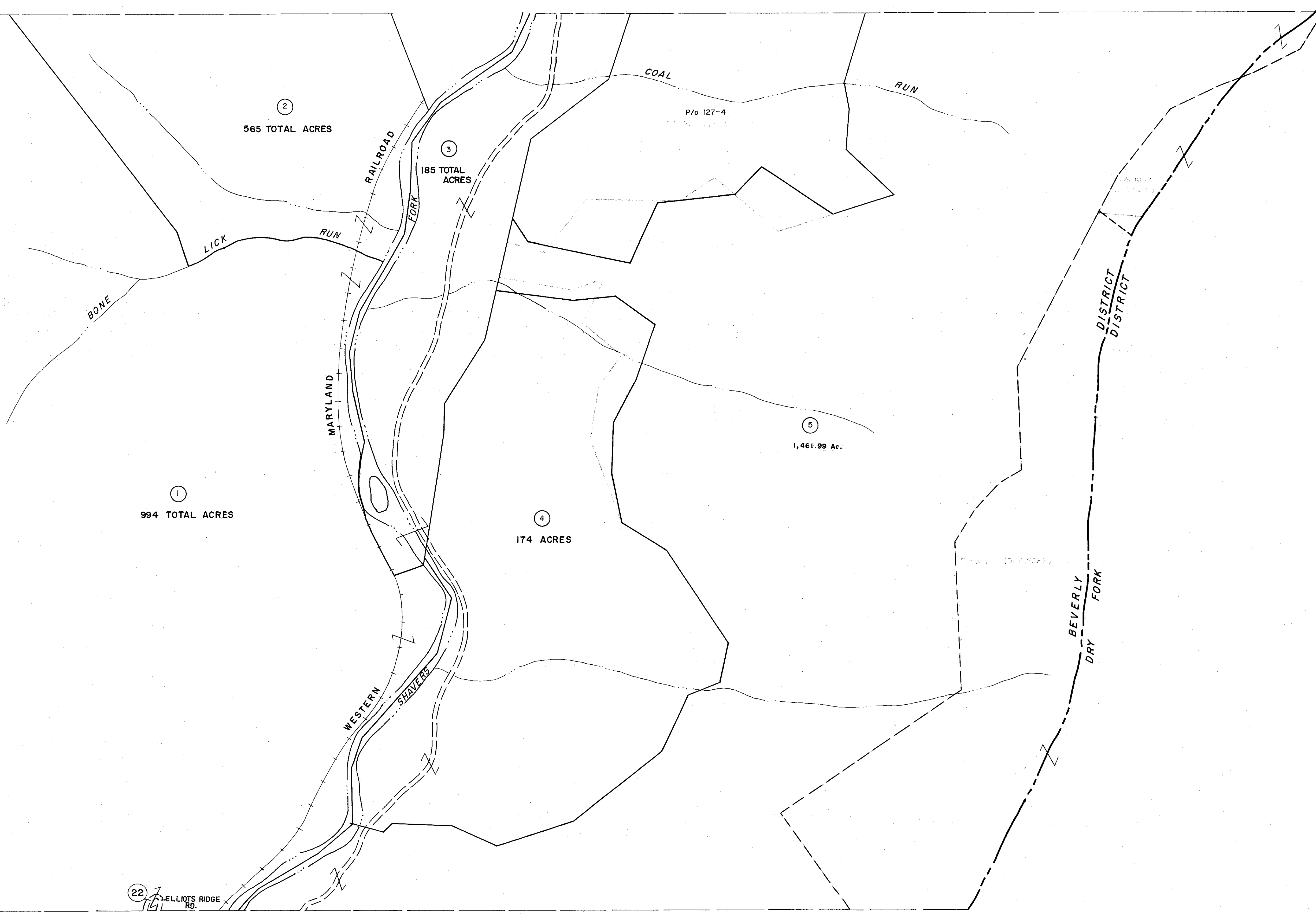


126 | 127
133 | 134

127 |
134

133 | 134
138 | 139

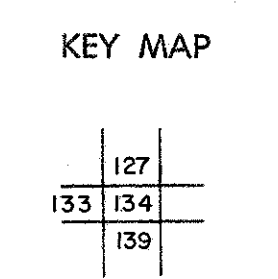
134 |
139



For Tax Purposes Only
 Prepared by
MICHAEL BAKER, JR., INC.
 Consulting Engineers
 Rochester, Pennsylvania

Legend	
Property line	Original lot line
Edge of pavement or roadway	Deed lot number
Corporation line	Parcel or index number
District line	Improvement
County line	Railroad

Revisions			
1	0-30-64	9	17
2	REV. TO 7-1-88	REB	18
3	OGIS 4-30-92	TL	19
4	OGIS 5-6-93	TL	20
5	O.G.I.S. 3-15-94	J.E.B.	21
6			22
7			23
8			24



RANDOLPH COUNTY
 STATE OF WEST VIRGINIA
 Office of Assessor

DISTRICT	
BEVERLY	
SHEET NO: 134	
Date, Aerial Photography: April, 1963	Date, Map: June, 1963
Photo No: 385-9-19	Scale: 1" = 400'