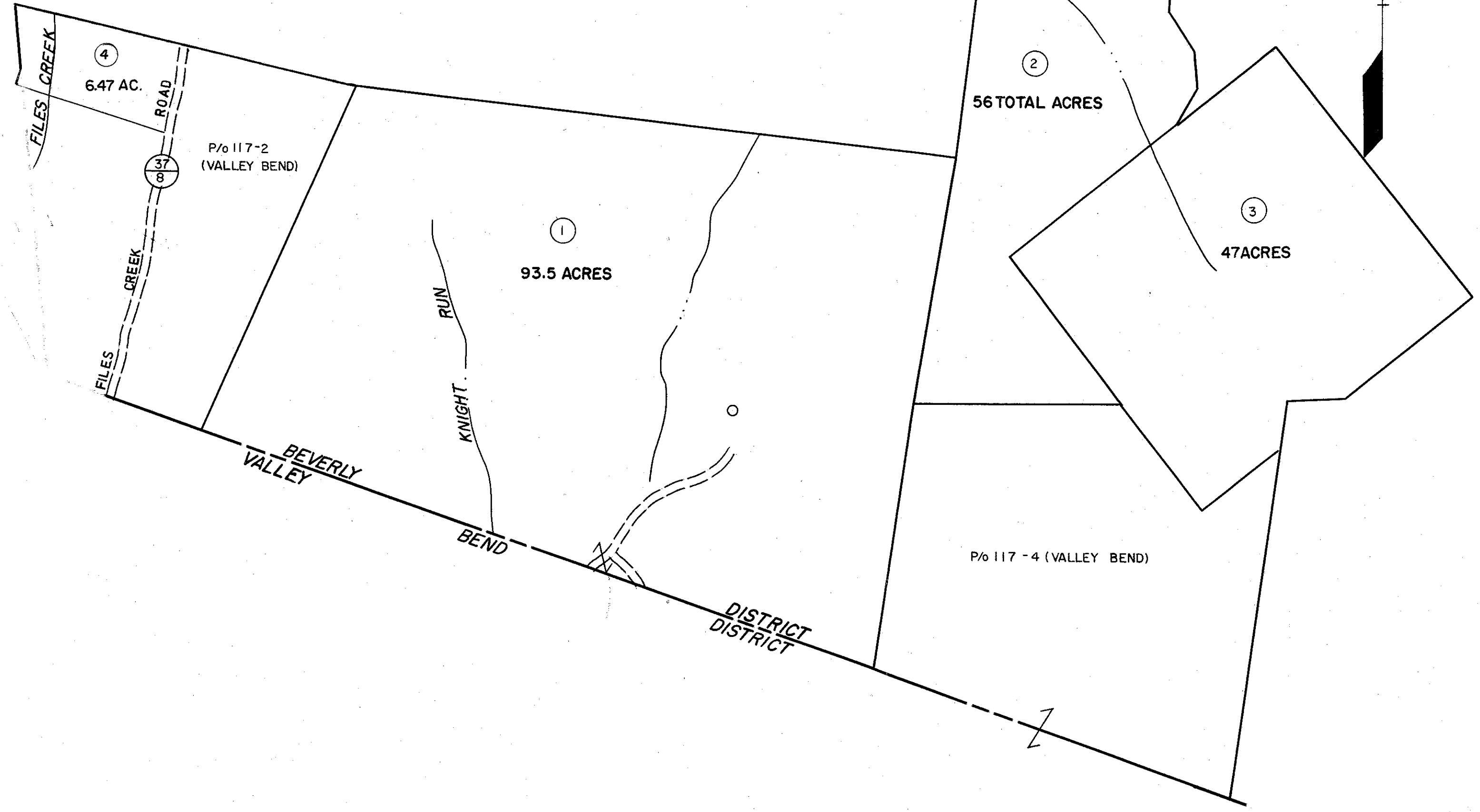


140
142

140 141
142 143



142

142 143

For Tax Purposes Only

Prepared by
MICHAEL BAKER, JR., INC.
Consulting Engineers
Rochester, Pennsylvania

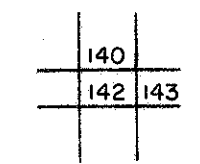
Legend

Property line	---	Original lot line	---
Edge of pavement or roadway	---	Deed lot number	(15)
Corporation line	---	Parcel or index number	(9)
District line	---	Improvement	o
County line	---	Railroad	---

Revisions

1	6-30-64	9	17
2	Revised to 7-1-65	10	18
3	OGIS 4-30-92 TL	11	19
4		12	20
5		13	21
6		14	22
7		15	23
8		16	24

KEY MAP



RANDOLPH COUNTY
STATE OF WEST VIRGINIA
Office of Assessor

DISTRICT

BEVERLY

SHEET NO:142

Date, Aerial Photography: April, 1963
Photo No: 385-11-14
Date, Map: June, 1963
Scale: 1"=400'