

118 119
129 130

119 120
130 140

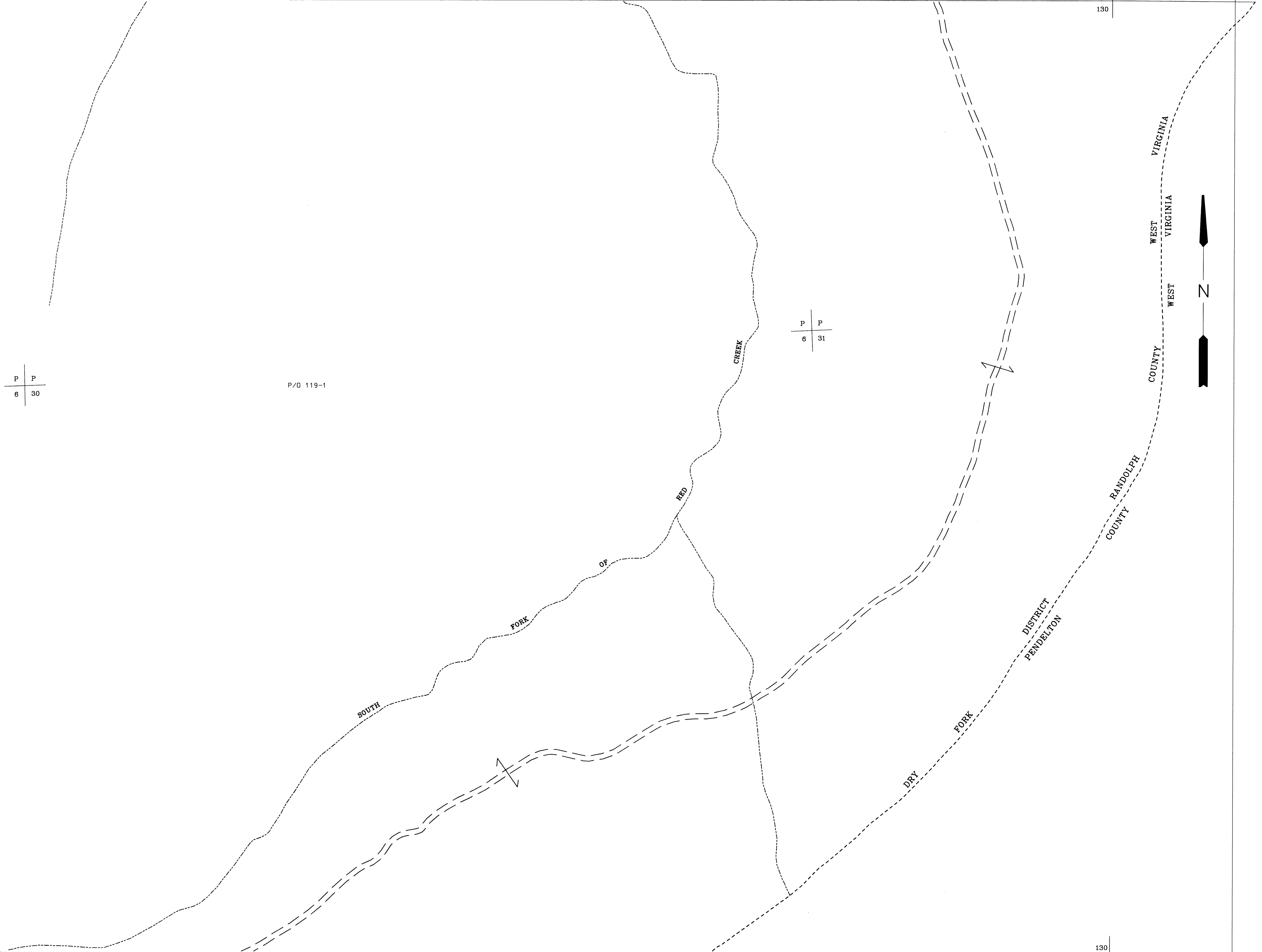
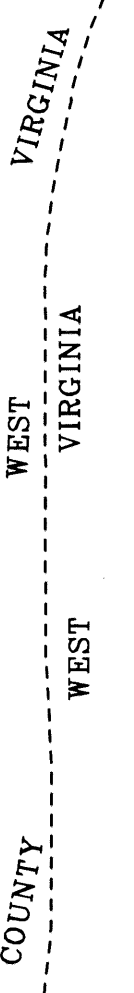
P P
8 30

P/O 119-1

P P
6 31

129 130
139 140

130 140



For Tax Purposes Only

Prepared by
McKenzie Engineering Corporation
806 Broad Street
Summersville, WV 26651

LEGEND

Property line	———	Original lot line	- - - - -
Edge of pavement or roadway	———	Deed lot number	(15)
Corporation line	———	Parcel or index number	99
District line	———	Improvement	o
County line	———	Railroad	———

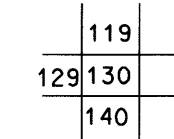
REVISIONS

1
2
3
4
5
6
7
8

RESTRICTION

All tax maps created under the provisions of reappraisal legislation are the property of Randolph County West Virginia and the reproduction, copying, distribution or sale of such tax maps or any copies thereof without the written permission of the Randolph County Assessor is prohibited by law.

KEY MAP



RANDOLPH COUNTY

STATE OF WEST VIRGINIA

Office of Assessor

DISTRICT

DRY FORK

SHEET NO: 130

Date, Aerial Photography: April, 1963
Photo No: 385-6-30 & 31

Date, Map: June, 1963
Scale: 1" = 400'