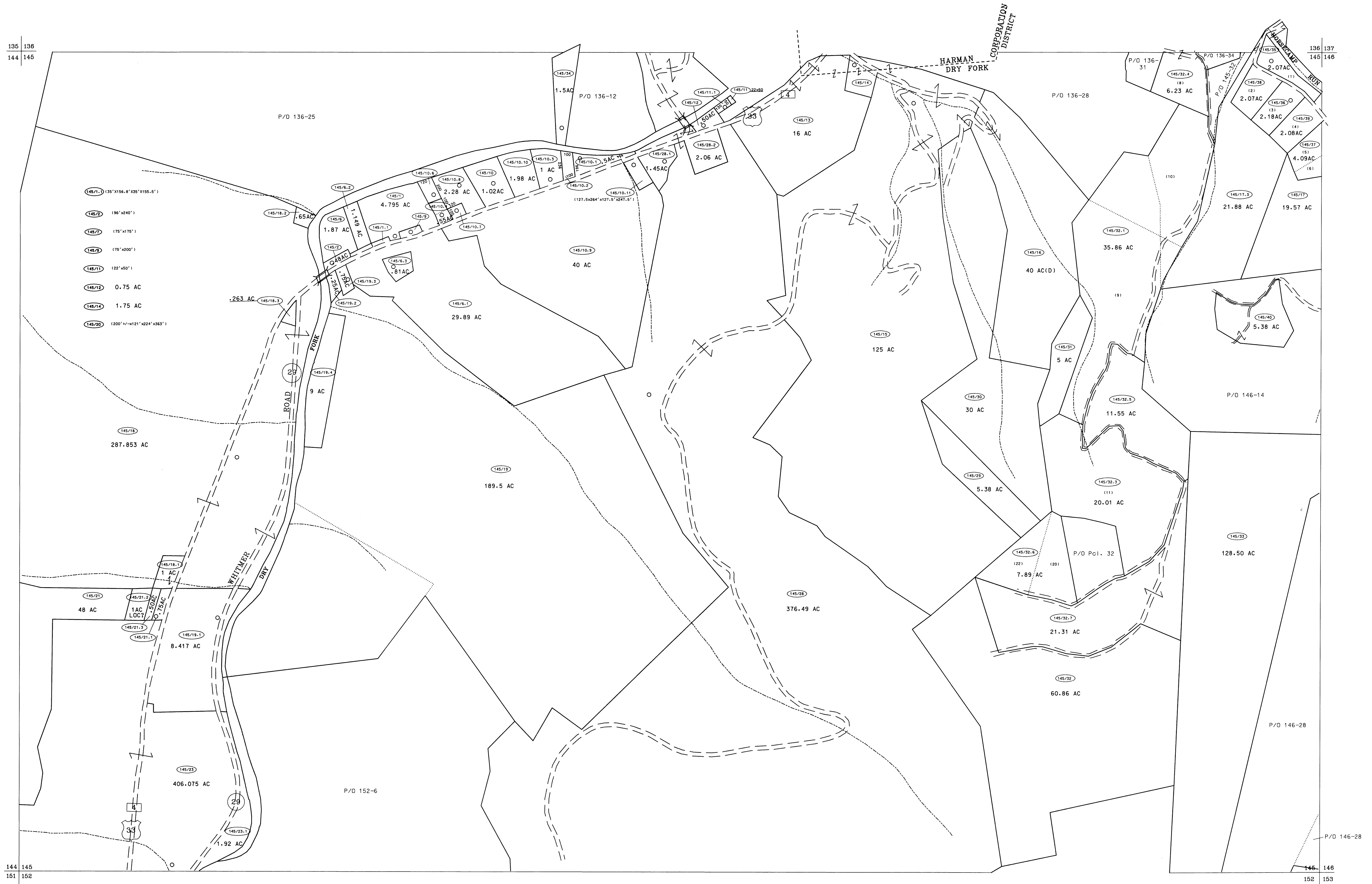


135 136
144 145

136 137
145 146

144 145
151 152

145 146
152 153



For Tax Purposes Only
Prepared by
McKenzie Engineering Corporation
806 Broad Street
Summersville, WV 26651

LEGEND	
Property line	Original lot line
Edge of pavement or roadway	Deed lot number (15)
Corporation line	Parcel or index number (99)
District line	Improvement
County line	Railroad

REVISIONS	
1	7/25/02 PKY
2	
3	
4	
5	
6	
7	
8	

RESTRICTION
All tax maps created under the provisions of reappraisal legislation are the property of Randolph County West Virginia and the reproduction, copying, distribution or sale of such tax maps or any copies thereof without the written permission of the Randolph County Assessor is prohibited by law.

KEY MAP	
136	145
144	145 146
152	

RANDOLPH COUNTY
STATE OF WEST VIRGINIA
Office of Assessor

DISTRICT
DRY FORK
SHEET NO: 145
Date, Aerial Photography: April, 1963
Photo No: 385-7-25
Date, Map: June, 1963
Scale: 1" = 400'