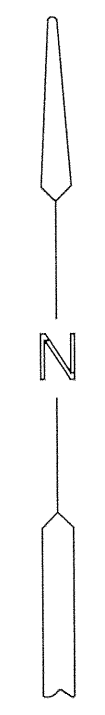
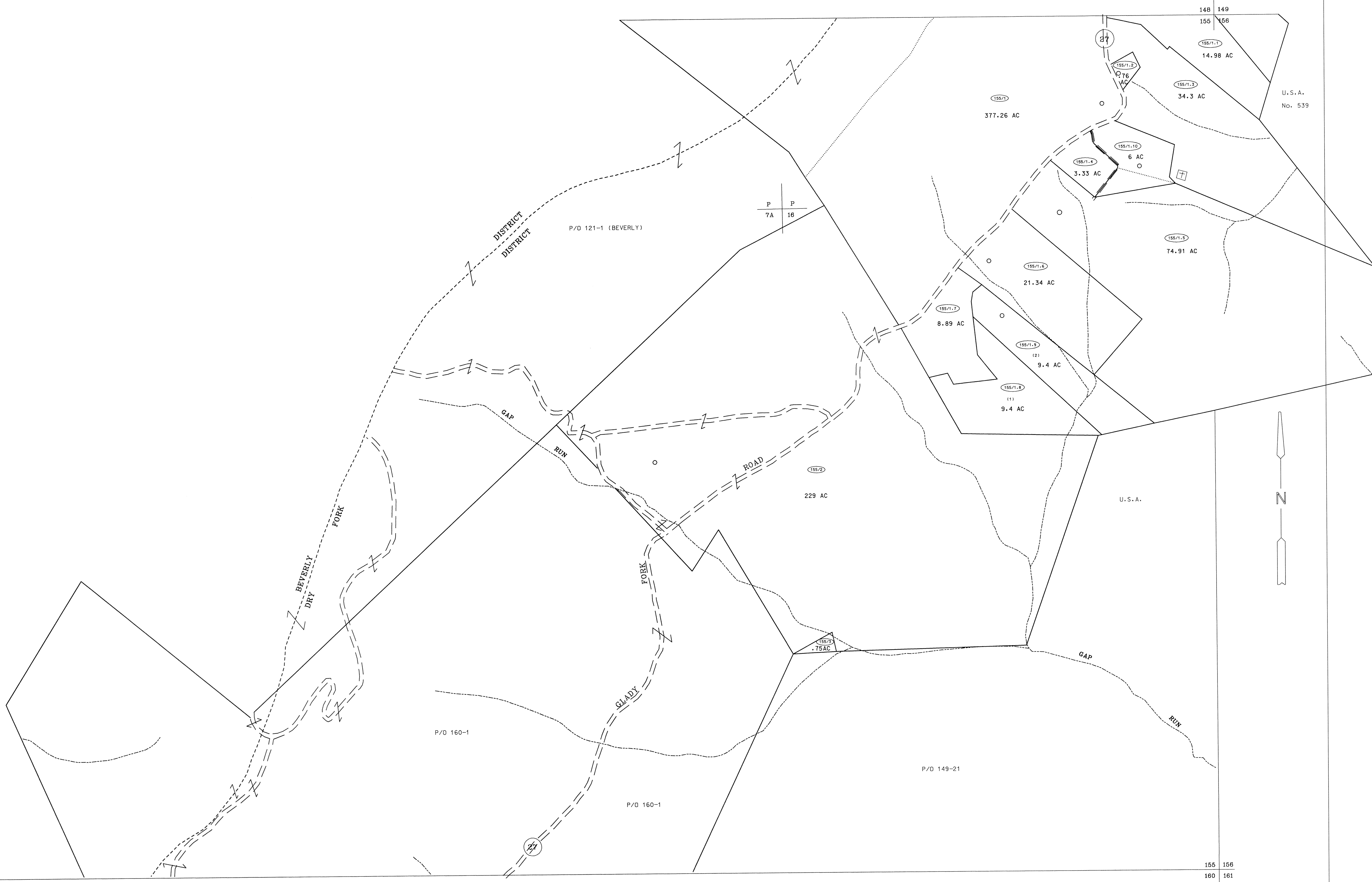


148
156

155
180



For Tax Purposes Only
Prepared by
McKenzie Engineering Corporation
806 Broad Street
Summersville, WV 26651

LEGEND	
Property line	—————
Edge of pavement or roadway	- - - - -
Corporation line	—————
District line	—————
County line	—————
Original lot line	- - - - -
Deed lot number	(15)
Parcel or index number	Ⓣ
Improvement	o
Railroad	—————

REVISIONS	
1	
2	
3	
4	
5	
6	
7	
8	

RESTRICTION

All tax maps created under the provisions of reappraisal legislation are the property of Randolph County West Virginia and the reproduction, copying, distribution or sale of such tax maps or any copies thereof without the written permission of the Randolph County Assessor is prohibited by law.

KEY MAP	
148	
155	156
160	

RANDOLPH COUNTY
STATE OF WEST VIRGINIA
Office of Assessor

DISTRICT
DRY FORK
SHEET NO: 155
Date, Aerial Photography: April, 1963
Photo No: 385-7A-16
Date, Map: June, 1963
Scale: 1" = 400'