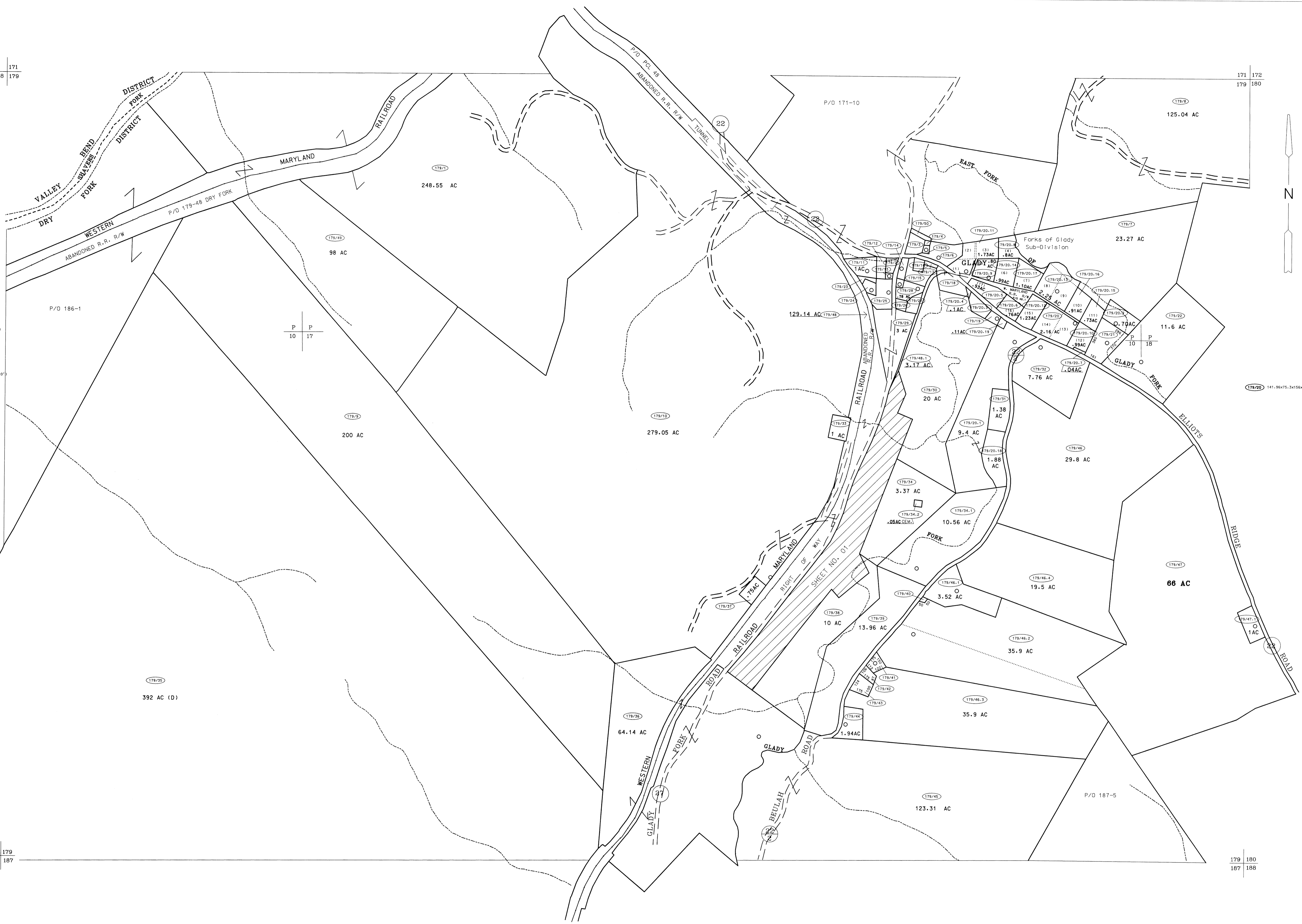


171
178 179

171 172
179 180



- 179/2 150'x85'x75'x50'
- 179/3 175'x174'x149'x175'x71'
- 179/4 140'x66'x55.5x77'
- 179/5 140'x65'
- 179/6 (1 ACRE)
- 179/12 (0.75 ACRE)
- 179/13 1150'x55'x50'x70'
- 179/14 (0.5 ACRE)
- 179/15 (1 ACRE)
- 179/16 190'x123'x80'x132'
- 179/17 1133'x50'x114'x50'x71'
- 179/18 150'x75'x160'x75'
- 179/19 (0.25 ACRE)
- 179/20.3 1141.96'x75.3'x156'x87.28'
- 179/23 167'x160'x83'x108'x49'1'
- 179/24 167'x49'x108'x106'x77'
- 179/25 1246'x123'x146'x77'x149'x120'
- 179/28 194'x118'x80'x108'
- 179/27 (0.2 ACRE)
- 179/30 1148'x55.5'x20'x204.5'x20'



For Tax Purposes Only

Prepared by
 McKenzie Engineering Corporation
 806 Broad Street
 Summersville, WV 26651

LEGEND	
Property line	———
Edge of pavement or roadway	- - - - -
Corporation line	-----
District line	-----
County line	-----
Original lot line	----- (15)
Parcel or index number	⊙
Improvement	○
Railroad	———

REVISIONS	
1	7/29/02 PKY
2	
3	
4	
5	
6	
7	
8	

RESTRICTION

All tax maps created under the provisions of reappraisal legislation are the property of Randolph County West Virginia and the reproduction, copying, distribution or sale of such tax maps or any copies thereof without the written permission of the Randolph County Assessor is prohibited by law.

KEY MAP	
171	179
178	180
187	188

RANDOLPH COUNTY
 STATE OF WEST VIRGINIA
 Office of Assessor

DISTRICT
 DRY FORK
 SHEET NO: 179
 Date, Aerial Photography: April, 1963
 Photo No: 385-10-17
 Date, Map: June, 1963
 Scale: 1" = 400'