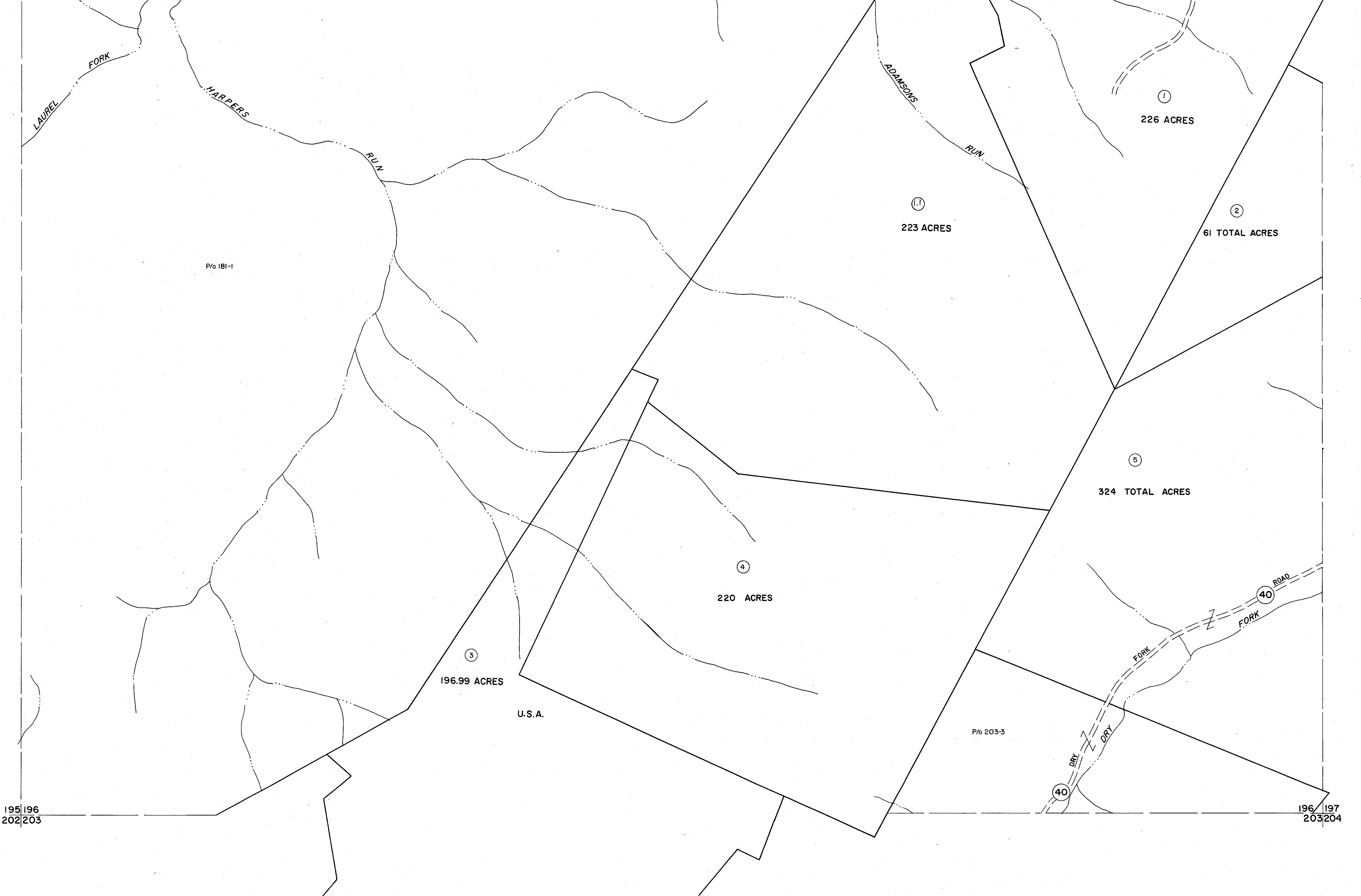


188|189  
195|196

189|190  
196|197



195|196  
202|203

196|197  
203|204

For Tax Purposes Only

Prepared by  
**MICHAEL BAKER, JR., INC.**  
Consulting Engineers  
Rochester, Pennsylvania

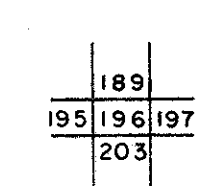
Legend

Property line	—	Original lot line	—
Edge of pavement or roadway	—	Deed lot number	(15)
Corporation line	—	Parcel or index number	(P)
District line	—	Improvement	(O)
County line	—	Railroad	—

Revisions

1	6-30-64	9		17	
2	12-8-80 TRL	10		18	
3	Revised to 7-1-89	11		19	
4	OGIS 6-30-92 TL	12		20	
5		13		21	
6		14		22	
7		15		23	
8		16		24	

KEY MAP



**RANDOLPH COUNTY**  
STATE OF WEST VIRGINIA  
Office of Assessor

DISTRICT

**DRY FORK**

SHEET NO:196

Date, Aerial Photography: April, 1963  
Photo No: 385-11-23  
385-12-25  
Date, Map: June, 1963  
Scale: 1"=400'