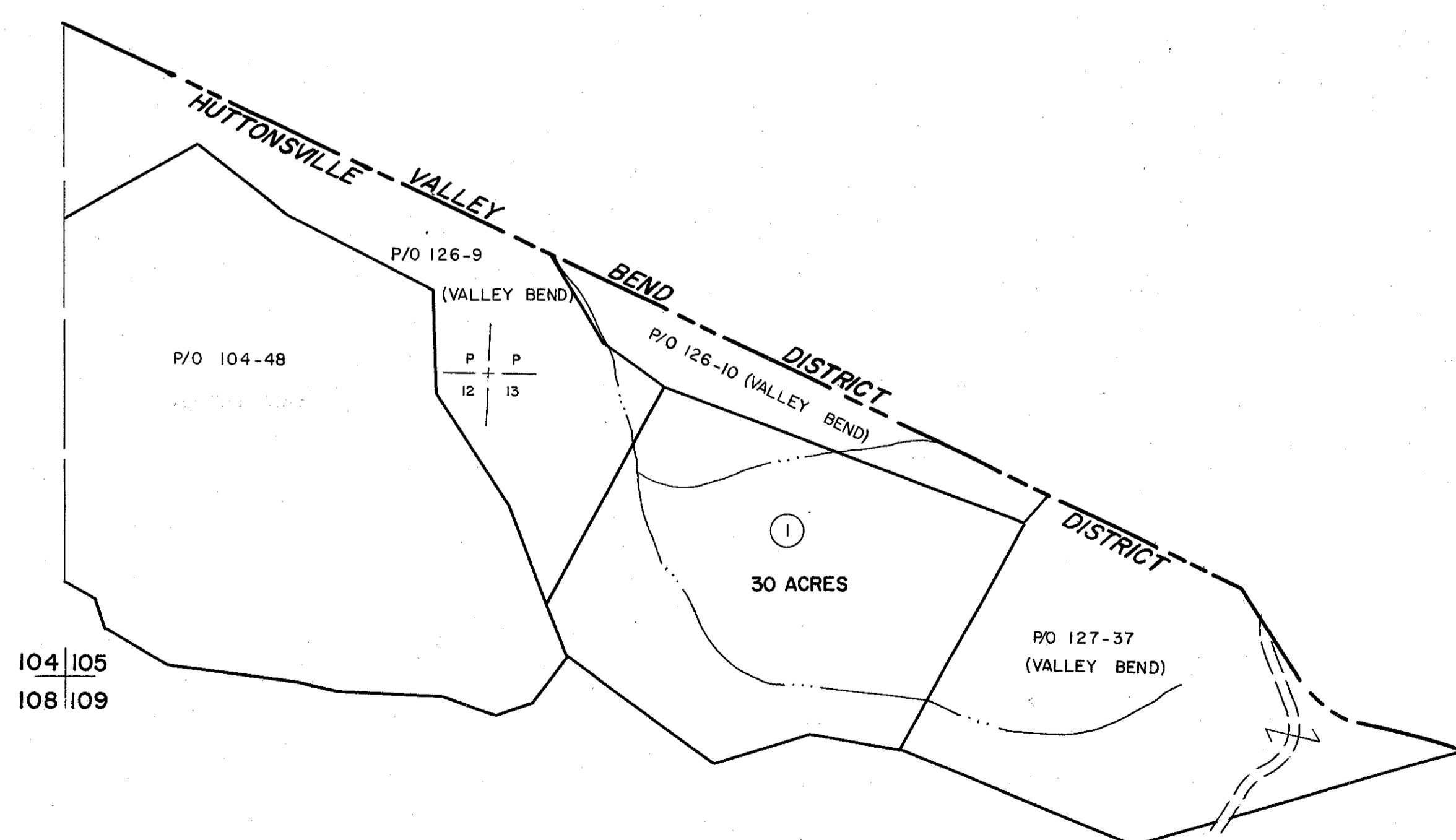


102 |
104 | 105

| 105
|



104 | 105
108 | 109

| 105
| 109 | 110

For Tax Purposes Only

Prepared by
MICHAEL BAKER, JR., INC.
Consulting Engineers
Rochester, Pennsylvania

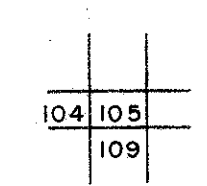
Legend

| | | | |
|-----------------------------|-------|------------------------|-------|
| Property line | ————— | Original lot line | ————— |
| Edge of pavement or roadway | ————— | Dead lot number | (15) |
| Corporation line | ————— | Parcel or index number | (99) |
| District line | ————— | Improvement | o |
| County line | ————— | Railroad | —+— |

Revisions

| | | | |
|---|---------|---------|----|
| 1 | 6-30-64 | 9 | 17 |
| 2 | OGIS | 2/28/91 | 10 |
| 3 | | | 11 |
| 4 | | | 12 |
| 5 | | | 13 |
| 6 | | | 14 |
| 7 | | | 15 |
| 8 | | | 16 |

KEY MAP



RANDOLPH COUNTY
STATE OF WEST VIRGINIA
Office of Assessor

DISTRICT
HUTTONSVILLE

SHEET NO: 105

Date, Aerial Photography: April, 1963 Date, Map: June, 1963
Photo No: 385-12-14 Scale: 1" = 400'