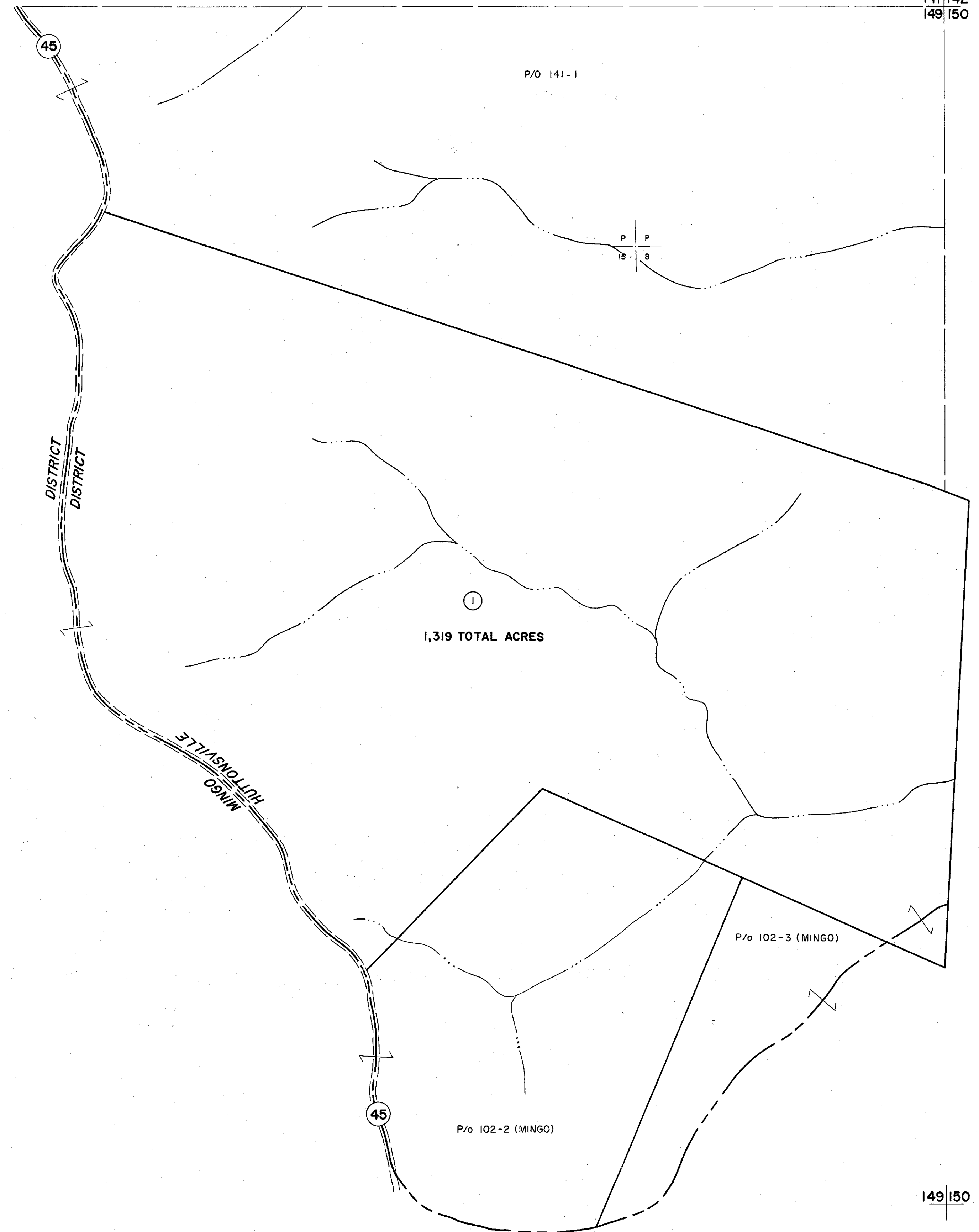


141  
149

141 142  
149 150



149

149 150

For Tax Purposes Only

Prepared by  
MICHAEL BAKER, JR., INC.  
Consulting Engineers  
Rochester, Pennsylvania

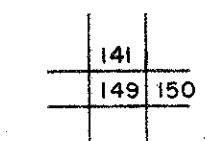
Legend

|                             |   |                        |      |
|-----------------------------|---|------------------------|------|
| Property line               | — | Original lot line      | —    |
| Edge of pavement or roadway | — | Deed lot number        | (15) |
| Corporation line            | — | Parcel or index number | (2)  |
| District line               | — | Improvement            | o    |
| County line                 | — | Railroad               | —    |

Revisions

|   |         |        |    |
|---|---------|--------|----|
| 1 | 6-30-64 | 9      | 17 |
| 2 | OGIS    | 3/1/91 | 10 |
| 3 |         |        | 11 |
| 4 |         |        | 12 |
| 5 |         |        | 13 |
| 6 |         |        | 14 |
| 7 |         |        | 15 |
| 8 |         |        | 16 |
|   |         |        | 18 |
|   |         |        | 19 |
|   |         |        | 20 |
|   |         |        | 21 |
|   |         |        | 22 |
|   |         |        | 23 |
|   |         |        | 24 |

KEY MAP



RANDOLPH COUNTY  
STATE OF WEST VIRGINIA  
Office of Assessor

DISTRICT

HUTTONSVILLE

SHEET NO: 149

Date, Aerial Photography: April, 1963 Date, Map: June, 1963  
Photo No: 385-15-7 Scale: 1"=400'